

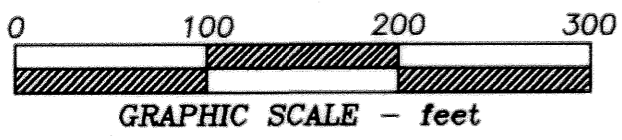
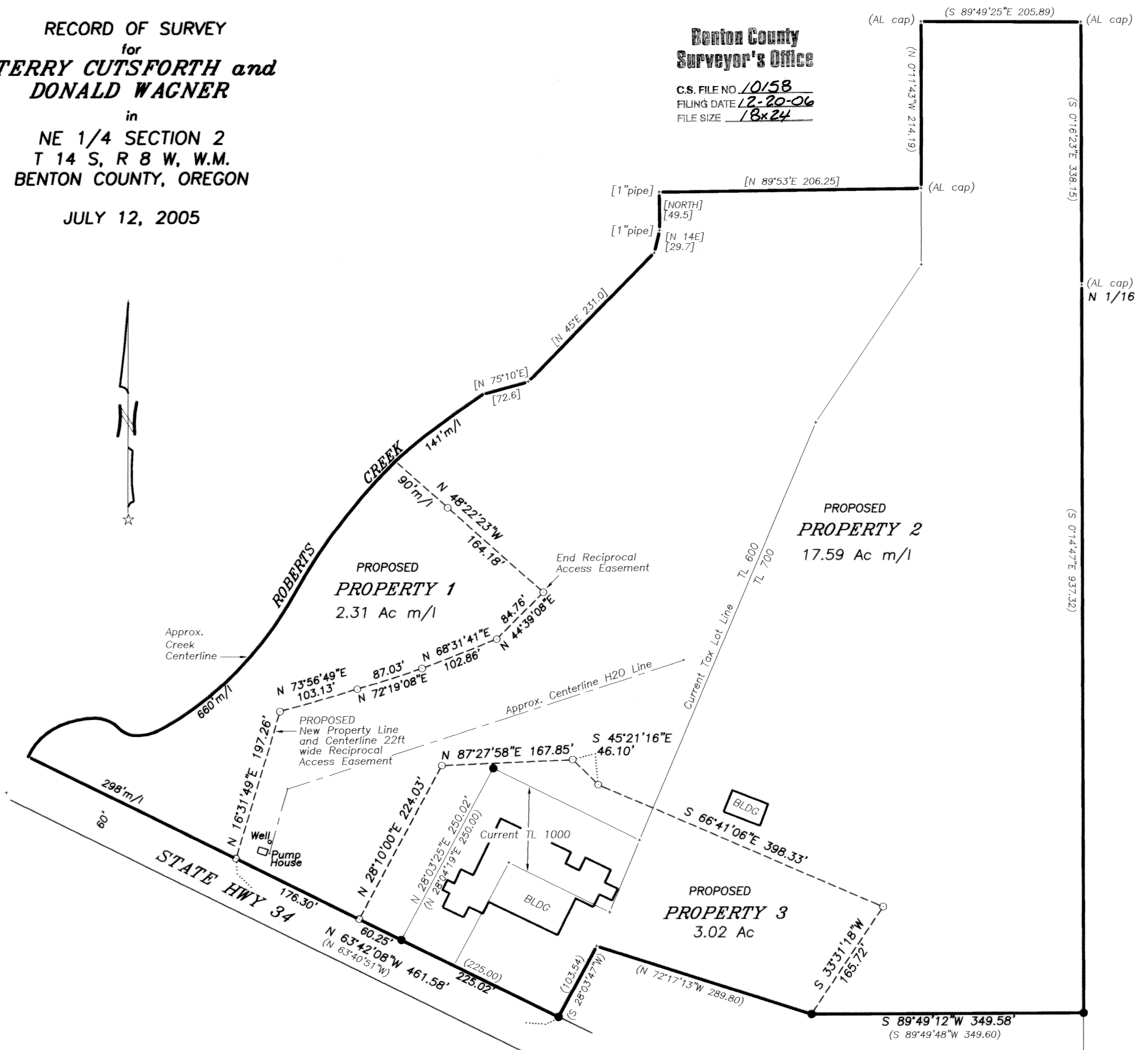
**RECORD OF SURVEY**  
for  
**TERRY CUTSFORTH and**  
**DONALD WAGNER**

in  
**NE 1/4 SECTION 2**  
**T 14 S, R 8 W, W.M.**  
**BENTON COUNTY, OREGON**

**JULY 12, 2005**

**Benton County**  
**Surveyor's Office**

C.S. FILE NO. 10158  
FILING DATE 12-20-06  
FILE SIZE 18x24



**LEGEND**

- .....Found monument: 3-1/4" Aluminum capped monument set per CS 8018.
- .....Set monument: 5/8"x 30" rebar with red plastic cap stamped "NORTHSTAR PLS 1823."
- ( )...Record data from CS 8018.
- [ ]... " " CS 816.

**NARRATIVE**

This survey is the result of Benton County Community Development Department Files LU-05-031 and LU-05-039. My clients own Tax Lots 600, 700 and 1000, Map 14-8-2A per M-369270-2004. The intention was to change the configuration of the tax lots.  
Tl 700 and 1000 were surveyed and monumented in 1987 per CS 8018. I oriented my survey to monuments I found from CS 8018. TL 600 was surveyed, in part, by CS 816, which appears to be a replatting of data from Hardcopy Survey 14-8#00001. I've represented the centerline of the southerly end of Roberts Creek by computing and scaling from CS 816.

REGISTERED  
**PROFESSIONAL**  
**LAND SURVEYOR**

*Theodore James Langton*  
OREGON  
JULY 13, 1979  
THEODORE JAMES LANGTON  
1823  
Renewal Date 12/31/2006

**NORTHSTAR SURVEYING, INC.**  
720 N.W. 4th Street  
Corvallis, Oregon 97330  
Phone: 541-757-9050

N 00°11'52"W 406.64'  
(S 01°15'2"E 406.59)  
BASIS OF BEARINGS  
S1 ● S2  
1/4 Corner