

C.S. # 1023

Hardcopy 14-5 # 11

also see notes in file

F. B. 37-27

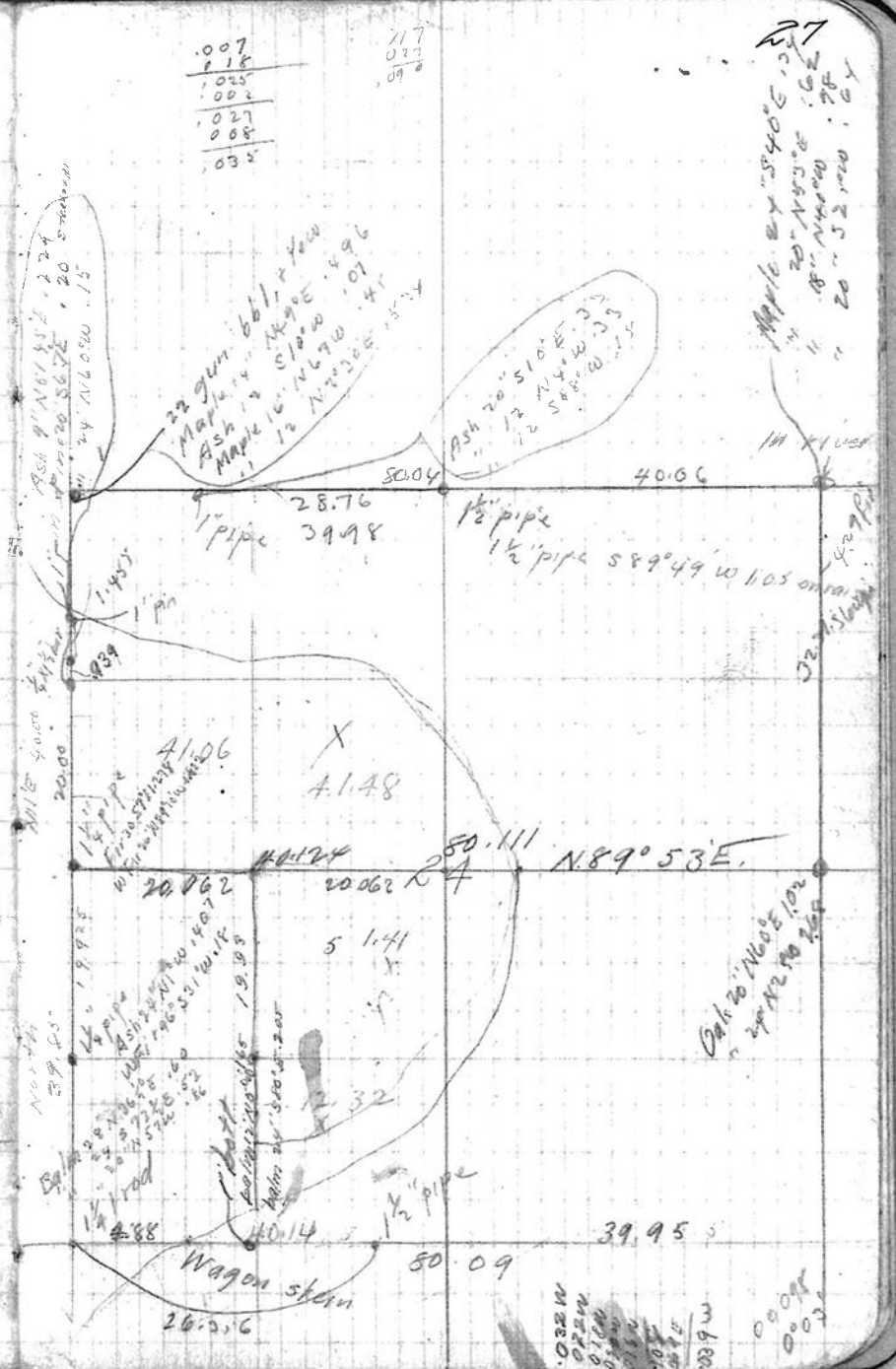
FB# 371
1023

C 5 254
T 14 5 R 5 W

set on pipe 4 cor 124
sight on cor. 20.00 S. farm 90°L

Tot az Set

3.752	3.752	Rasp.	East	.007N
9.558	9.558		Correct to N 89° 53' E	
Δ 1 rod	5° 56' L		.025 N	
1.129	1.123			
Δ	1° 38' R		.117 N	.090 S
4.075	0° 0'		.118 S	
1.522		Ash 30" NE .37	.035 N	
Δ 8" pipe	89° 57' R	Balm 70" SE .85	0.32 E	
5.090		50° 08' E	0.38 N	
8.280		Correct to South	0.27 E	
Δ	0° 15' R		0.14 E	
5.000				
Δ	0° 0'		.082 W	0.36 E
1.560			.034 E	
Δ		ORE of 1/4 pipe		
5.348				
Δ	0° 15' R		.024 E	
4.16				
Δ	1" bolt		0.18 W	0.36 E
4.606		CROSSING SLAUGHTER	.020 W	0.58 E
3.606		89° 36' R	.016 W	0.70 E
4.962		0° 42' R	.010	
5.881		0° 12' R		
4.347		hit 095 N/dar		



.007
.118
.025
.002
.027
.088
.035

117
027
09

Maple 24' N 54° 06' E 127
" " 20' N 53° E 162
" " 18' N 44° W 115
" " 20' S 106° E 333

Calc to N 60° 10' W
24' N 54° 06' E

.022 W
0.10 W
0.10 W
0.02 E
0.02 W
0.02 W

0.00 E
0.00 W