

**Benton County
Surveyor's Office**

C.S. FILE NO 10266
 FILING DATE 11-28-07
 FILE SIZE 11x17

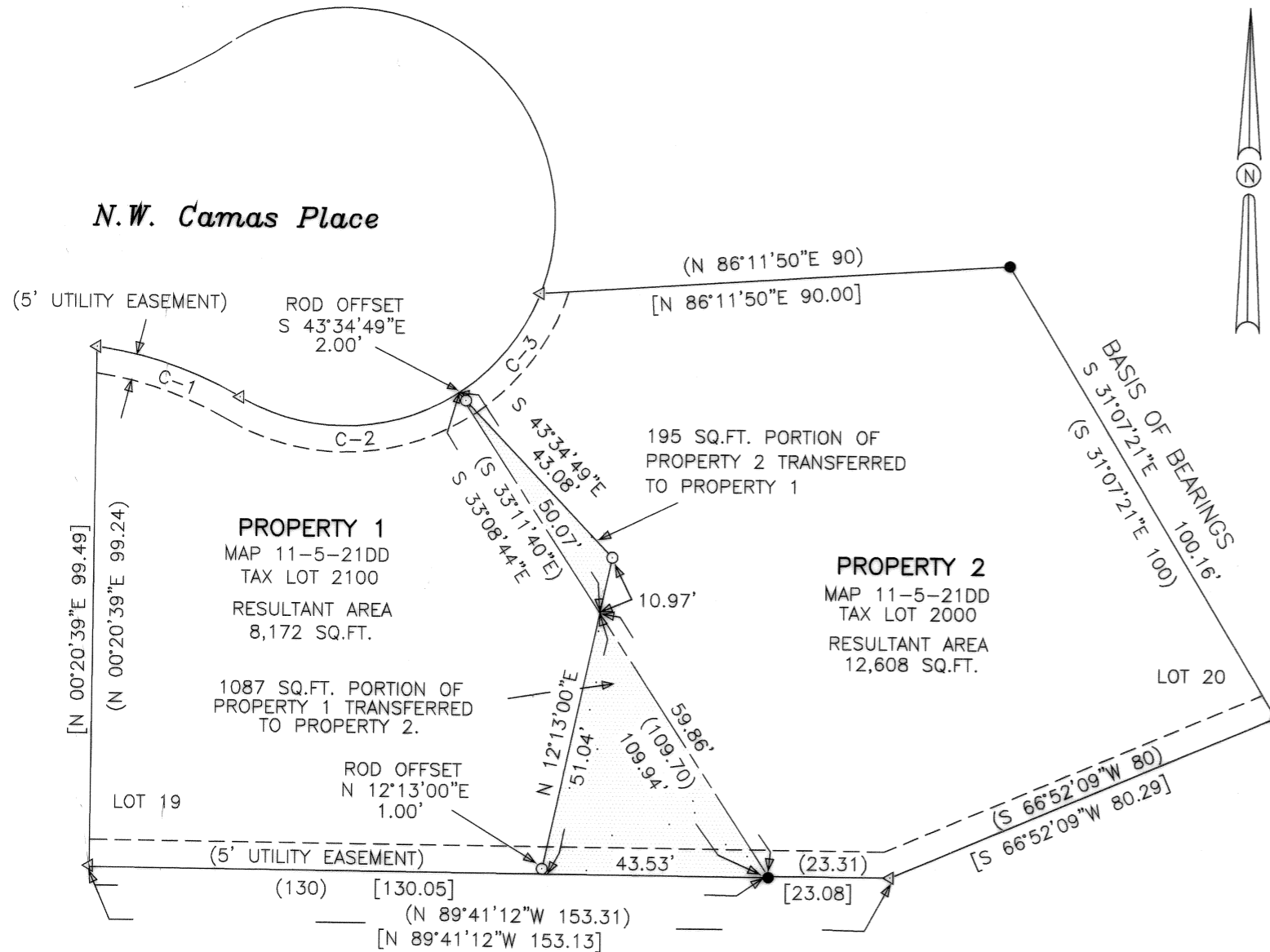
LLA07-00015
 Map of Survey
 and
 Property Line Adjustment
 for
Joyce Maitland

NOVEMBER 6, 2007

LOTS 19 & 20, BLOCK 4, TIMBER HILL
 SE 1/4 SEC. 21 & SW 1/4 SEC. 22
 T.11 S., R.5 W., W.M.,
 BENTON COUNTY, OREGON

Narrative

This map of survey was prepared pursuant to a condition of Corvallis Community Development, Planning Division Case No. LLA07-00015. Many of the original monuments in the Timber Hill subdivision were removed or disturbed by utilities or sidewalk installation. For control I held in position the monuments found at the NE, SE & SW corners of Lot 20, record plat data from the NE corner of Lot 20 for the northerly lines of lots 19 & 20 and record plat bearing westerly of the SW corner of Lot 20.



REGISTERED
 PROFESSIONAL
 LAND SURVEYOR

Darryl W. Harms

OREGON
 JULY 30, 1976
 DARRYL W. HARMS
 1079
 RENEWAL DATE 6/30/09

DARRYL W. HARMS, P.L.S.
 720 N.E. GRANGER #1
 P.O. BOX 1051
 CORVALLIS, OR 97339
 PHONE: (541) 745-3948
 FAX: (541) 745-3952

Legend

- 5/8" IRON ROD FOUND
- SET 5/8" X 30" STEEL REBAR WITH YELLOW PLASTIC CAP STAMPED "DARRYL HARMS, PLS 1079"
- ◁ CALCULATED POINT
- () RECORD DATA FROM PLAT OF "TIMBER HILL"
- [] CALCULATED DATA

Approved

Eugene J. ... 11-19-07
 City Engineer, City of Corvallis Date

Neil ... 11-27-07
 Planning Division Manager, City of Corvallis Date

CURVE	DELTA	RADIUS	ARC	CH. BEARING	CHORD
C-1	(22°19'29"	75.00'	29.21'	S 71°14'12"E	29.04'
	[22°19'29"	75.00'	29.21'	S 71°14'12"E	29.04'
C-2	(63°06'34"	40.00'	44.07'	N 88°22'15"E	41.87'
	[63°06'34"	40.00'	44.07'	N 88°22'15"E	41.87'
C-3	(35°48'34"	40.00'	25'	N 38°54'41"E	24.59'
	[35°48'34"	40.00'	25.00'	N 38°54'41"E	24.59'