

**FOUND MONUMENT LIST:**

- [50] POINT "C" FD. 1-1/4" I.P. (C), 0.10' ABOVE GROUND. HELD.
- [51] POINT "D" FD. 1" I.P. (C), FLUSH WITH GROUND. HELD.
- [53] POINT "A" FD. 1/2" I.P. (C), (RECORD IS 3/4" I.P.), 0.20' ABOVE GROUND AND 0.13' EAST OF FENCE. HELD.
- [54] POINT "B" FD. 1/2" I.P. (C), 0.10' ABOVE GROUND AND IN FENCE LINE. HELD.
- [57] FD. 3/4" I.P. (X), 0.10' BELOW GROUND, 0.50' WEST OF FENCE AND 0.21' WEST OF LINE.
- [58] FD. 1" CAR AXLE (C), 0.30' ABOVE GROUND, 0.90' SOUTHEAST OF FENCE CORNER AND 0.13' EAST OF LINE.
- [59] FD. 3-1/4" BRASS DISK.

**RECORD REFERENCE LIST:**

- (A) DEED RECORD 2007-430646
- (B) DEED RECORD 2007-430676
- (C) HARDCOPY 10-3 00002
- (X) SOURCE UNKNOWN

**Benton County**  
**Surveyor's Office**

C.S. FILE NO. 10291  
FILING DATE 4-14-08  
FILE SIZE 18x24

RECORD OF SURVEY  
AND  
PROPERTY LINE ADJUSTMENT  
FOR  
**DORIS HUTMACHER**

LOCATED IN  
**JOHN Q. THORNTON D.L.C. No. 37**  
**SW 1/4 SEC. 31, T. 10 S., R. 3 W., W.M.**  
**CITY OF ALBANY, BENTON COUNTY, OREGON**

FEBRUARY 28, 2008

PLANNING CASE FILE No. LA-15-07

**APPROVAL:**

THIS SURVEY APPROVED THIS 11<sup>TH</sup> DAY OF April, 2008

*Barbara Steffanovich for Don Donovan*  
CITY OF ALBANY COMMUNITY DEVELOPMENT DIRECTOR

**LEGEND:**

- FOUND MONUMENT, AS NOTED; SEE "FOUND MONUMENT LIST"
- SET 5/8" X 30" ROD W/YPC MARKED: "K&D ENGR. LS 78508"
- CALCULATED POINT FROM RECORD DATA
- ( ) RECORD DATA; SEE "RECORD REFERENCE LIST"
- [ ] CALCULATED DATA BASED ON RECORD INFORMATION
- FD. FOUND
- I.P. IRON PIPE (INSIDE DIAMETER)
- DOC. DOCUMENT
- YPC YELLOW PLASTIC CAP
- C.S. COUNTY SURVEY
- [50] FOUND MONUMENT REFERENCE; SEE "FOUND MONUMENT LIST"
- (A) RECORD SURVEY REFERENCE; SEE "RECORD REFERENCE LIST"
- ▨ AREA TO BE TRANSFERRED FROM PROPERTY "A" TO PROPERTY "B" = 0.43 ACRES

REGISTERED  
PROFESSIONAL  
LAND SURVEYOR

OREGON  
JAN 9, 2007  
JAMEY S. MONTOYA  
#78508

EXPIRES: 12/31/08

**NARRATIVE:**

**PURPOSE:**

THE PURPOSE OF THIS SURVEY IS TO SET MONUMENTS TO ESTABLISH AN APPROVED PROPERTY LINE ADJUSTMENT PER CITY OF ALBANY PLANNING CASE FILE No. LA-15-07.

**BOUNDARY DETERMINATION:**

FOUND MONUMENTS OF RECORD, CALCULATED POINTS, AND SET MONUMENTS WERE HELD TO ESTABLISH THE BOUNDARY AS SHOWN ON THE MAP AND FURTHER DESCRIBED BELOW.

**POINT "A-1"** WAS SET ON THE LINE ESTABLISHED BY POINTS "A" AND "B" AT THE RECORD DISTANCE OF 175.00' FROM POINT "A" PER DEED RECORDED IN DOCUMENT No. 2007-430646.

**POINT "A-2"** WAS SET ON THE LINE ESTABLISHED BY POINTS "A" AND "C" AT THE RECORD DISTANCE OF 34.00' FROM POINT "A" PER DEED RECORDED IN DOCUMENT No. 2007-430646.

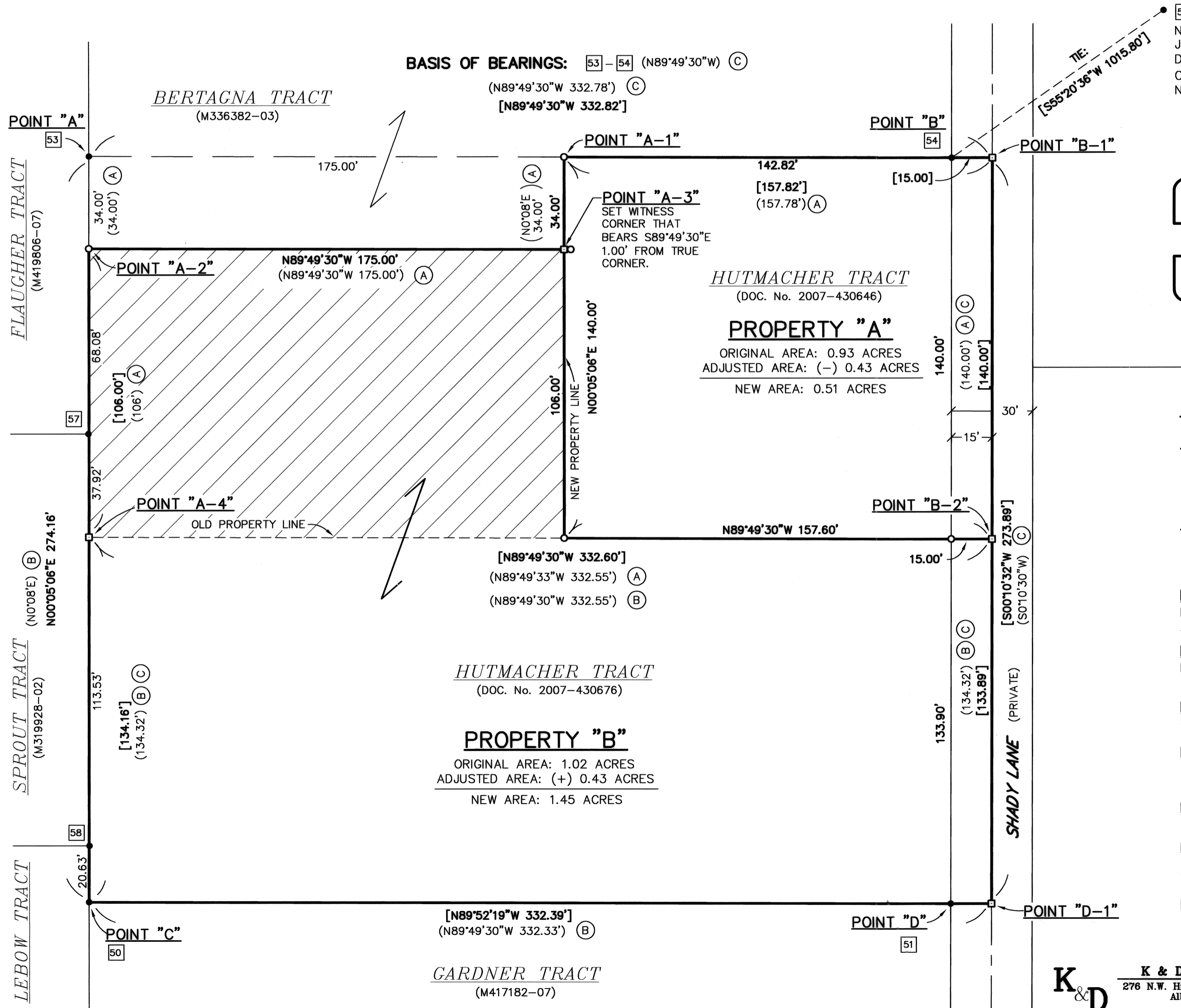
**POINT "A-3"** WAS CALCULATED AT A DISTANCE-DISTANCE INTERSECTION HOLDING POINTS "A-1" AND "A-2" PER DEED RECORDED IN DOCUMENT No. 2007-430646.

**POINT "A-4"** WAS CALCULATED ON THE LINE ESTABLISHED BY POINTS "A" AND "C" AT THE RECORD DISTANCE OF 140.00' FROM POINT "A" PER DEED RECORDED IN DOCUMENT No. 2007-430646.

**POINT "B-1"** WAS CALCULATED 15.00' EASTERLY OF POINT "B" ON THE PROJECTION OF THE LINE ESTABLISHED BY POINTS "A" AND "B".

**POINT "B-2"** WAS CALCULATED ON THE LINE ESTABLISHED BY POINTS "B-1" AND "D-1" AT THE RECORD DISTANCE OF 140.00' FROM POINT "B-1" PER DEED RECORDED IN DOCUMENT No. 2007-430646.

**POINT "D-1"** WAS CALCULATED 15.00' EASTERLY OF POINT "D" ON THE PROJECTION OF THE LINE ESTABLISHED BY POINTS "C" AND "D".



**BASIS OF BEARINGS:** [53]-[54] (N89°49'30"W) (C)  
(N89°49'30"W 332.78') (C)  
[N89°49'30"W 332.82']

**HUTMACHER TRACT**  
(DOC. No. 2007-430646)

**PROPERTY "A"**  
ORIGINAL AREA: 0.93 ACRES  
ADJUSTED AREA: (-) 0.43 ACRES  
NEW AREA: 0.51 ACRES

**HUTMACHER TRACT**  
(DOC. No. 2007-430676)

**PROPERTY "B"**  
ORIGINAL AREA: 1.02 ACRES  
ADJUSTED AREA: (+) 0.43 ACRES  
NEW AREA: 1.45 ACRES

**GARDNER TRACT**  
(M417182-07)

**K & D**

**K & D ENGINEERING, Inc.**  
276 N.W. Hickory Street P.O. Box 725  
Albany, Oregon 97321  
(541) 928-2583

Date: **3/18/2008** Time: 11:29  
Scale: 1=30  
File: dwg\2008\08-39\08-39PLA.dwg (Jamey M) **SHEET 1 OF 1**