

PROPERTY LINE ADJUSTMENT SURVEY

for

**ELIZABETH & BRUCE HAYLER**

on

**PARCELS 1 & 2  
PARTITION PLAT 2008-07**

in

**SE 1/4 SECTION 28  
T 14 S, R 5 W, W.M.  
CITY OF MONROE  
BENTON COUNTY, OREGON**

JULY 14, 2008

**NARRATIVE**

This Property Line Adjustment Survey is the result of the City of Monroe's decision dated May 6, 2008 regarding a variance from the property area maximum. As the map reflects, there is an exchange of property between Parcels 1 and 2 of Partition Plat 2008-07 which enlarges Property 2 and gives it frontage along Fir Street.

I surveyed and plotted Partition Plat 2008-07 in March of this year. I used the same survey control network for this project and thus show the same data between points common to the two surveys.

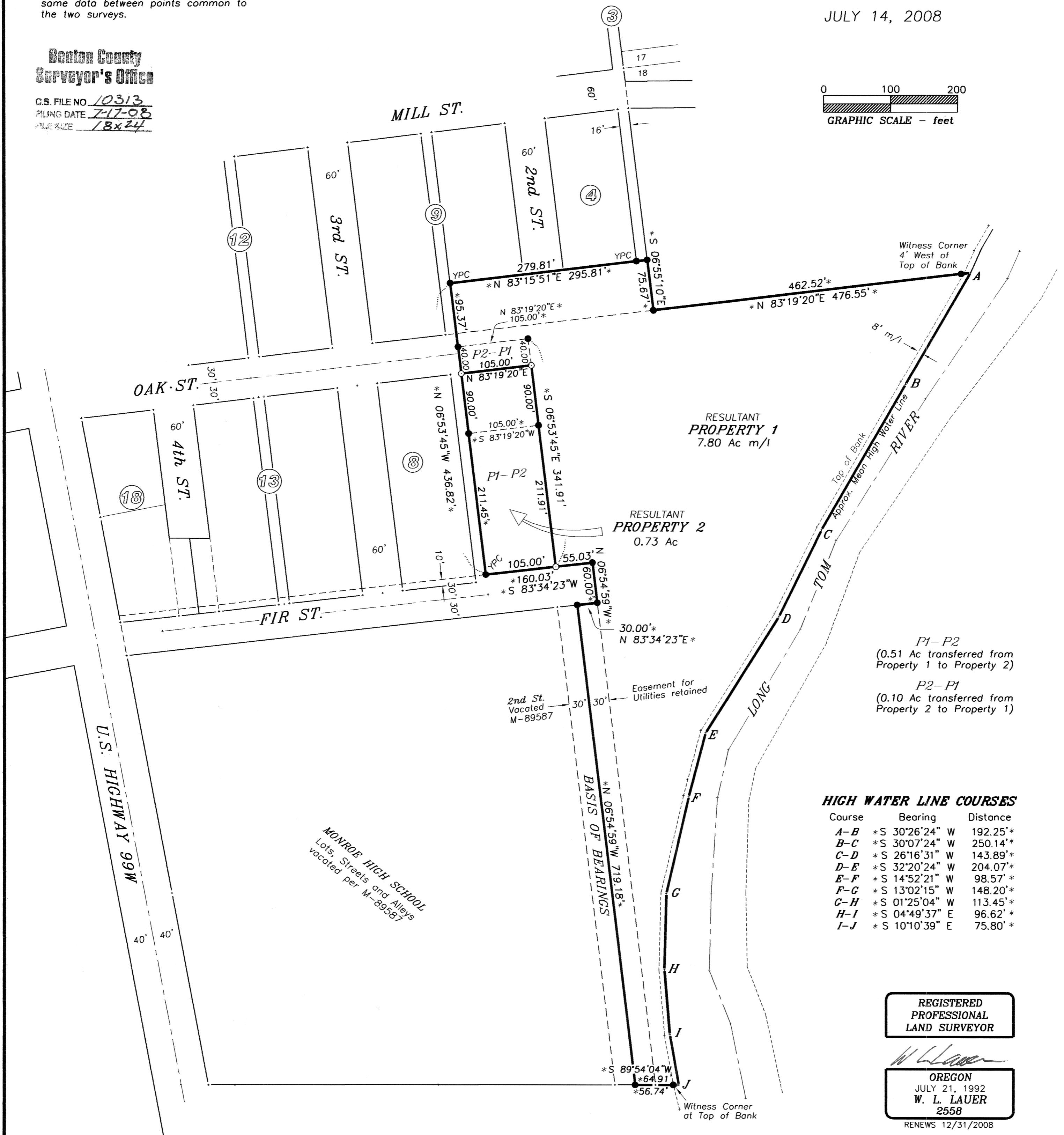
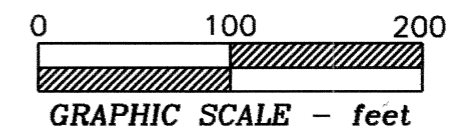
**LEGEND**

- .....Found monument: 5/8" iron rod with red plastic cap set per Partition Plat 2008-07, unless otherwise noted.
- YPC.....Yellow Plastic Cap on 5/8" rod set per CS 7159.
- .....Set monument: 5/8"x 30" rebar with red plastic cap stamped "NORTHSTAR SURVEYING."
- \*.....Data matches Partition Plat 2008-07.



**Benton County  
Surveyor's Office**

C.S. FILE NO 10313  
FILING DATE 7-17-08  
PLAT SIZE 18x24



PROPERTY LINE ADJUSTMENT APPROVED

*Jamie Monroe* 7-16-2008  
Planning Official date  
City of Monroe

**NORTHSTAR SURVEYING, INC.**  
720 N.W. 4th Street  
Corvallis, Oregon 97330  
Phone: 541-757-9050

REGISTERED  
PROFESSIONAL  
LAND SURVEYOR

*W. L. Lauer*  
OREGON  
JULY 21, 1992  
W. L. LAUER  
2558  
RENEWS 12/31/2008