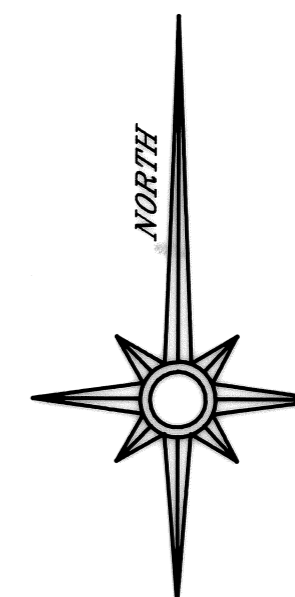
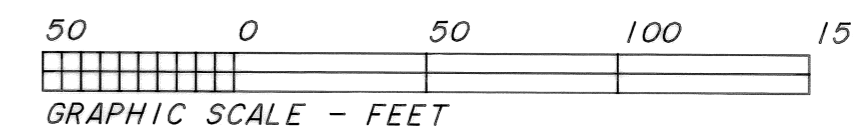


RECORD OF SURVEY
 for **PIONEER TELEPHONE COOPERATIVE**
 and **THE CHURCH OF CHRIST OF LOBSTER VALLEY**
 in the Northeast 1/4 of Section 4,
 Township 15 South, Range 8 West, Willamette Meridian,
 Benton County, Oregon
 August 4, 2009



LEGEND

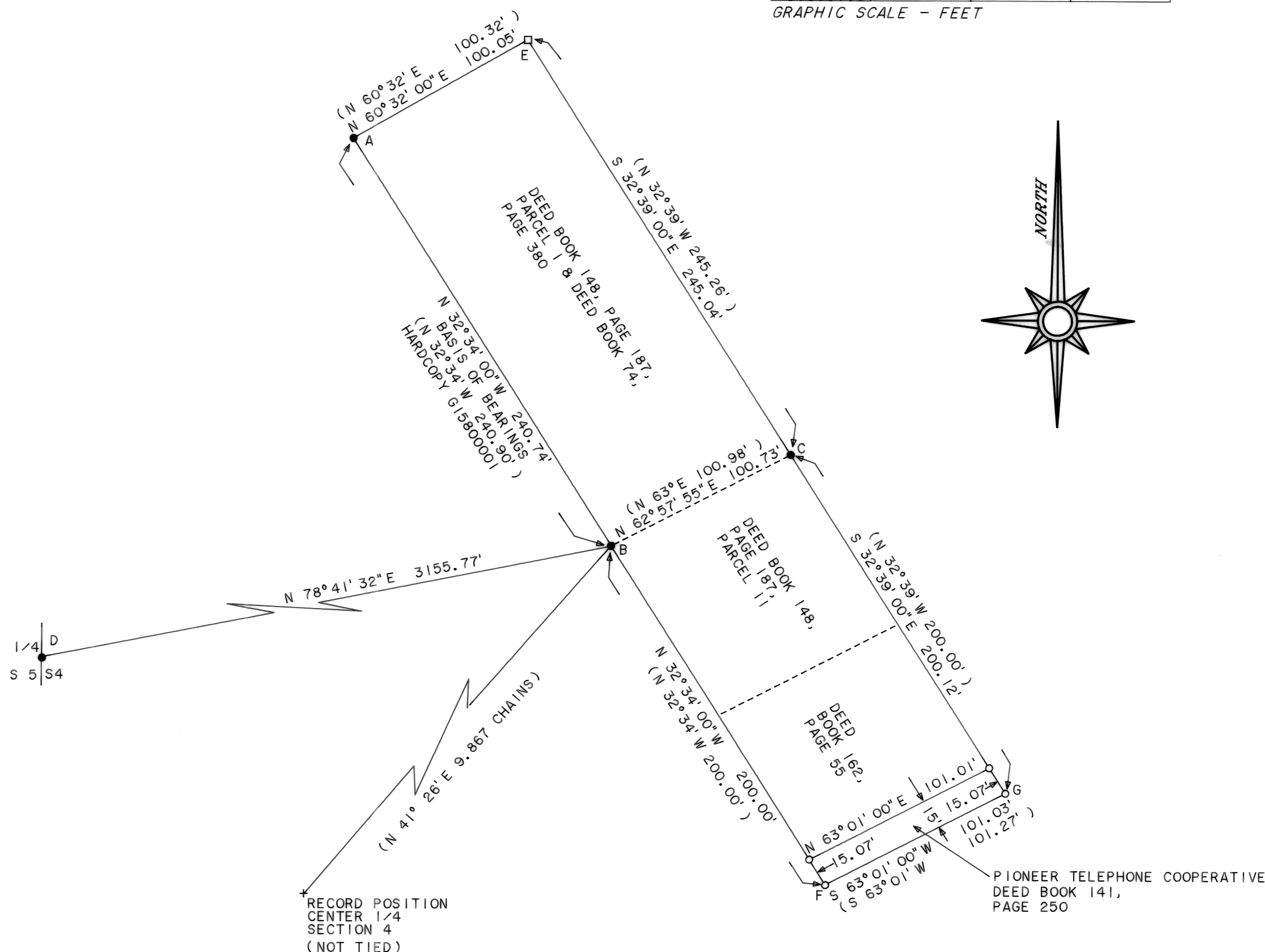
- FOUND MONUMENT AS NOTED IN MONUMENT TABLE.
- SET 5/8" X 30" IRON ROD WITH YELLOW PLASTIC CAP MARKED "SPRINGER LS1102".
- () DATA OF RECORD FROM HARDCOPY SURVEY G 15800001.
- COMPUTED POINT, FALLS IN LOBSTER VALLEY ROAD NUMBER 58150 (40' RIGHT OF WAY), NO MONUMENT SET.
- + POSITION OF CENTER 1/4 CORNER COMPUTED FROM HARDCOPY G15800001, NOT TIED.

MONUMENT TABLE

- | | |
|---|--|
| A | FOUND 3/4" BOLT WITH SQUARE NUT. (HARDCOPY G15800001) |
| B | FOUND 1/2" X 1-1/2" IRON BAR, 8" BELOW SURFACE. (HARDCOPY G15800001) |
| C | FOUND 1/2" IRON PIPE, 14" BELOW SURFACE. (HARDCOPY G15800001) |
| D | FOUND 2-1/2" IRON PIPE WITH 3-1/4" BRASS CAP MARKED "T15S R8W 1/4 S5 S4 1968". CAP IS 4" ABOVE SURFACE. (BLM 1968) |

NARRATIVE

This survey was done to monument the corners of the Pioneer Telephone Cooperative property as described in Deed Book 141, Page 250, Benton County Deed Records. The Basis of Bearings is from Galloway Hardcopy survey G15800001. Point "E" was computed at intersection of record bearings from points "A" and "C". Point "F" was computed at the record distance of 200 feet from point "B". Point "G" was computed at the intersection of record bearings from points "F" and "C". The deed distances and the distances on hardcopy G15800001 are in chains and in some cases are given only to the link so bearings were held over distances to compute corner positions. Distances shown as record are converted from chains to feet. Pipe measurement is inside diameter. Field measurements were made with a 1-second reading electronic total station.



REGISTERED
 PROFESSIONAL
 LAND SURVEYOR

Norman D. Springer
 OREGON
 JULY 22, 1977
 NORMAN D. SPRINGER
 1102

RENEWAL DATE 6/30/10

SPRINGER SURVEYING
 37056 MOSS ROCK DRIVE
 CORVALLIS, OREGON 97330
 PHONE: (541) 745-5798