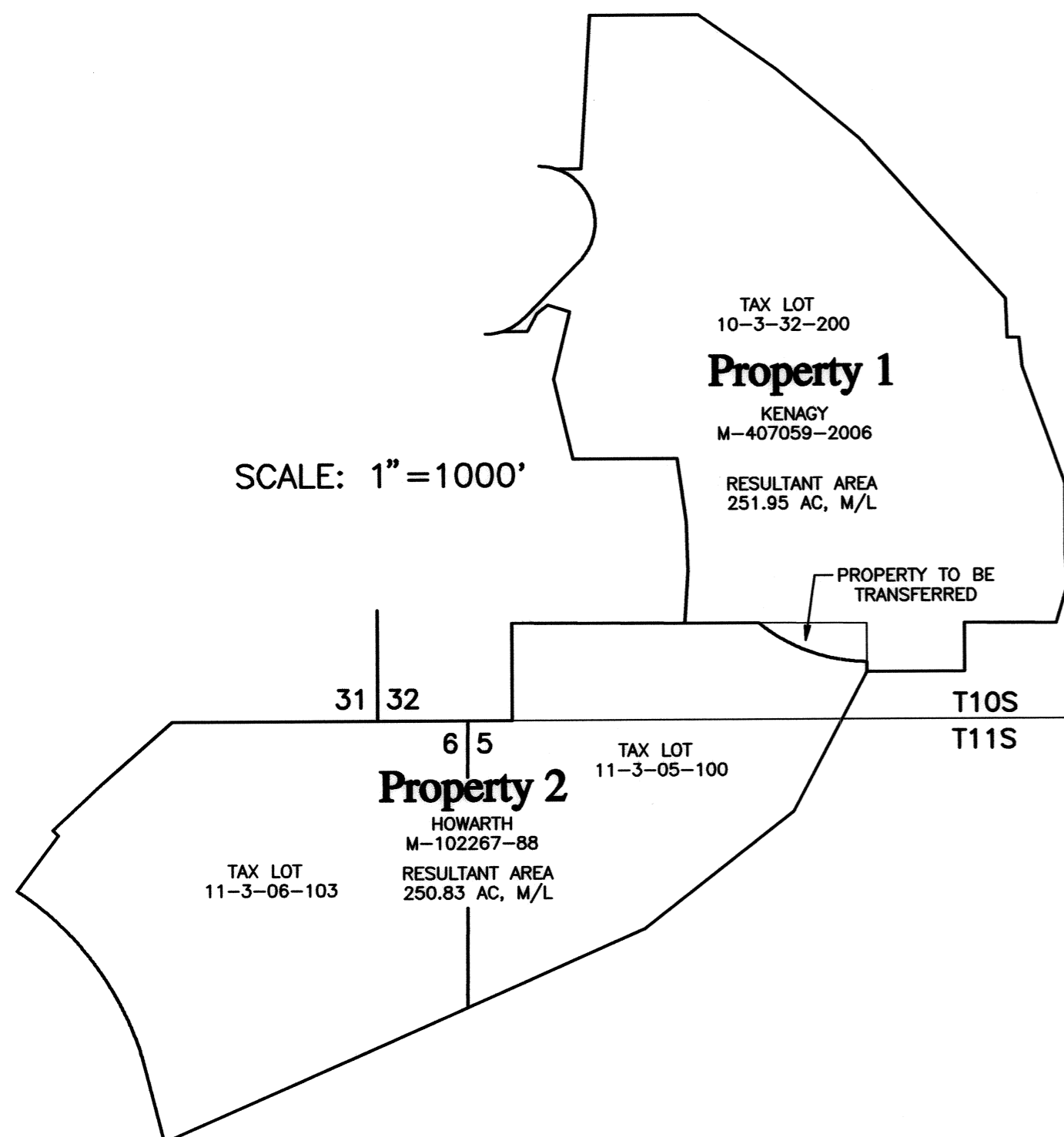


SCALE: 1" = 1000'

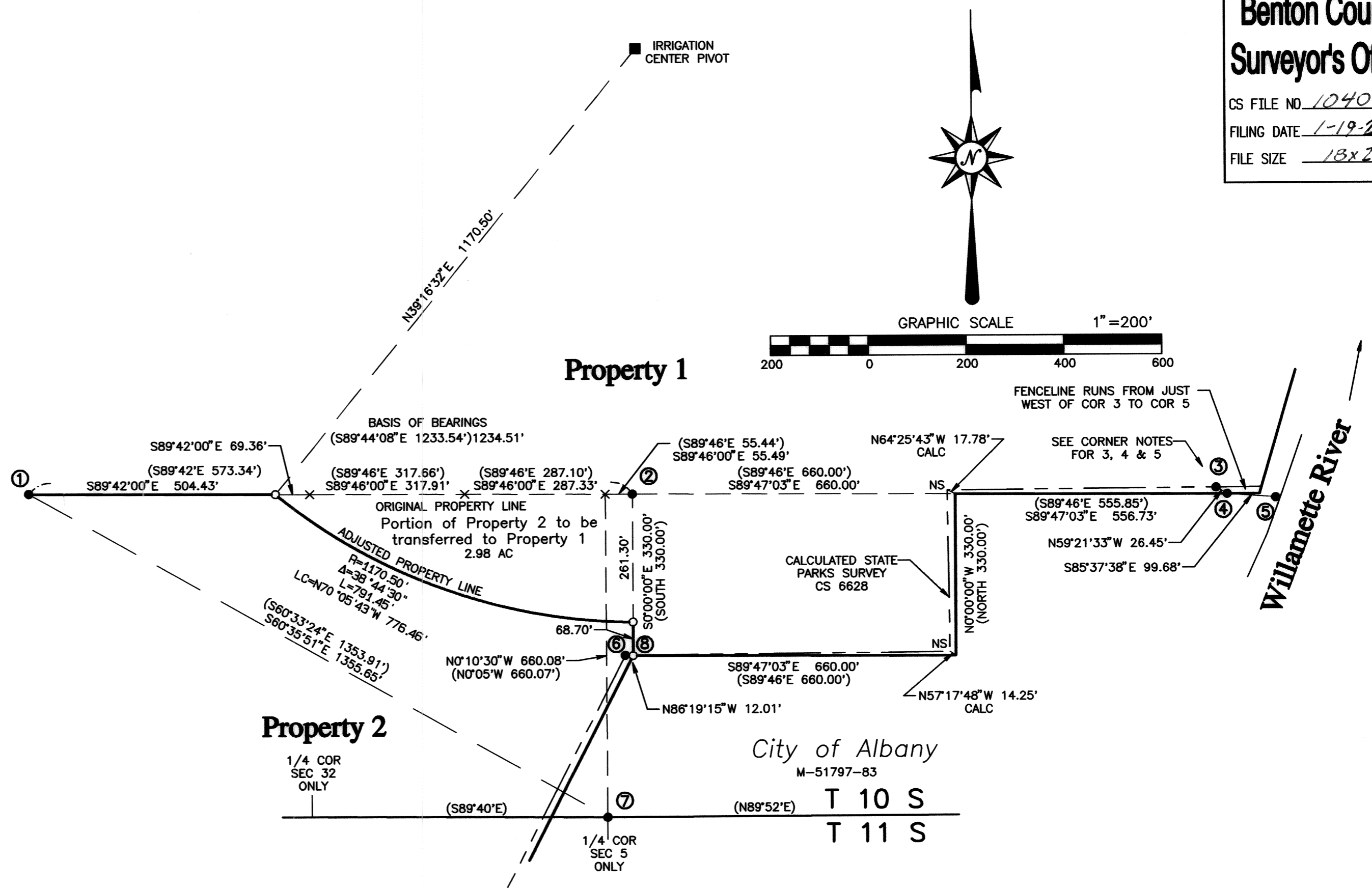


**Corner Notes**

- 1 Found a 1/2" iron rod, GHC 10-3-00005
- 2 Found a 5/8" iron rod, down 6" driven through a harrow disk with yellow plastic cap "BENTON COUNTY SURVEYOR", no record. Iron rod and disk were reportedly set by landowner to perpetuate the corner location. See notes for Benton County GPS station 93655. I removed the Benton County cap and reset the iron rod approximately 26" below the surface with a yellow plastic cap marked "PARSONS PLS1918".
- 3 Found a 5/8" iron rod with aluminum cap "OREGON STATE PARKS" and delineator paddle south 1 foot, N59°21'33"W 26.45' from the 1/1-4" pipe at Corner 4, in an East/West fenceline. CS 6628.
- 4 Found a 1-1/4" pipe, GHC 10-3-00005
- 5 Found an automobile leaf spring Southeast 1 foot from a wood fence anchor post, S85°37'38"E 99.68' from a 1-1/4" pipe at Corner 4. No record found.
- 6 Found 5/8" iron rod with aluminum cap, marks not visible and delineator paddle south 2 feet per CS 5416.
- 7 Found 3-1/4" Benton County brass cap on 2" iron pipe, Standard Quarter Corner, Section 5. Restoration 113240700
- 8 Set a 5/8" iron rod with yellow plastic cap marked "PARSONS PLS1918". A 5/8" iron rod with aluminum cap (corner 6) bears N86°19'15"W 12.01 feet

**Legend**

- FOUND MONUMENT AS NOTED
- SET 5/8" X 30" IRON ROD & YELLOW PLASTIC CAP MARKED "PARSONS PLS1918"
- ( ) RECORD INFORMATION, M-407059-2006 OR GALLOWAY HARDCOPY 10-3-00005
- IR IRON ROD
- YPC YELLOW PLASTIC CAP
- IP IRON PIPE, INSIDE MEASURE
- X MONUMENT SEARCHED, NOTHING FOUND
- FD FOUND
- NS NOT SEARCHED FOR
- CALC CALCULATED DISTANCE AND DIRECTION
- M/L MORE OR LESS



**Narrative**

The purpose of this survey is a property line adjustment between those properties described in the deeds recorded as M-407059-2006 and M-102267-88 pursuant to Benton County Community Department decision, File No LU-09-064.

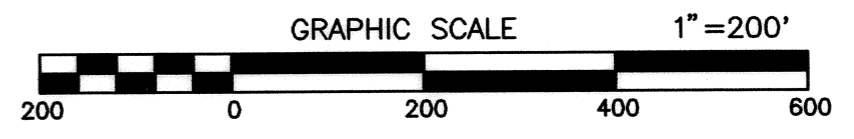
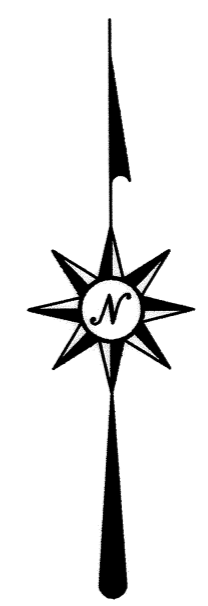
Basis of Bearings is S 89°44'08" E between the monuments at 1 and 2, calculated from Galloway Hard Copy 10-3-00005. The monument at 2 is not shown on the GHC but the deed recorded as M-407059-06 calls a 1 inch pipe. I was unable to find the pipe, but found a 5/8" iron rod reportedly set by Cliff Kenagy to perpetuate the corner location. I searched for corners marked X on the map without success. Calculations for the position of corner 2 based on corners 1 & 4 and corners 1 & 7 indicate that the iron rod is within approximately 0.3 feet of the record location. Based on this, I accept the iron rod found at corner 2 as being the best evidence of the original location of the corner. Intervening corners between corners 1 and 2 were calculated by rotation and scaling of the original record distances and directions (Grant Boundary Method).

The two surveys by Oregon State Parks, CS 5416 and CS CS 6628 show no ties to any previously established survey monuments in Section 32 and differ from previous surveys by approximately 12 feet. The point of beginning of the corresponding deed to the City of Albany differs from previous surveys by approximately 21 feet. I did not accept the monuments established of CS 5416 and CS 6628 as representing the true property lines.

The adjusted property line was established as an arc centered on the existing irrigation center pivot shown shown with a radius calculated so that the area to be conveyed is less than 3 acres.

Equipment used: Topcon GTS-4 Total Electronic Station.  
 Monuments set: 12/07/2009

References  
 Deeds: M-407059-2006, M-102267-88, M-51797-83  
 Surveys: Galloway Hardcopy 10-3-00005, CS 670, CS 5416, CS 6628, CS 7558, CS 8834, GPS Station 93655, Corner Restoration 113240700



**APPROVED: LU-09-064**

*Gina Verret* 1/13/2010  
 Benton County Planning Official Date

REGISTERED  
**PROFESSIONAL  
 LAND SURVEYOR**

*Tyler B. Parsons*  
 OREGON  
 JULY 18, 1980  
**TYLER B. PARSONS**  
 1918

EXP: 12/31/2010

<b>PROPERTY LINE ADJUSTMENT SURVEY</b>	
for <b>Kenagy et al and Howarth</b>	
SW1/4 and the SE1/4, Section 32, T 10 S, R 3 W, W.M Benton County, Oregon	
<b>PARSONS SURVEYING</b> 1915 S.E. Stone Street Corvallis, OR 97333 (541) 752-7515	Scale: 1" = 200' Date: 12/7/2009 Drawn: TBP Project: 0921 Drawing: 0921PLA