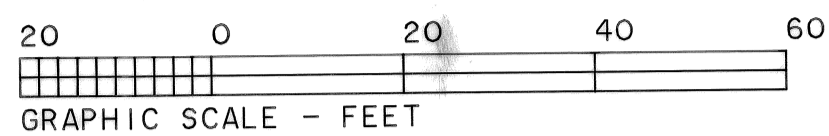


**RECORD OF SURVEY**  
**for THE CLEMENS FOUNDATION**  
**in Lots 9 & 10, Block 4,**  
**TOWN OF ALSEA,**  
**and the NE 1/4 of Section 1,**  
**T. 14 S., R. 8 W., W.M.,**  
**Benton County, Oregon**  
**May 12, 2010**

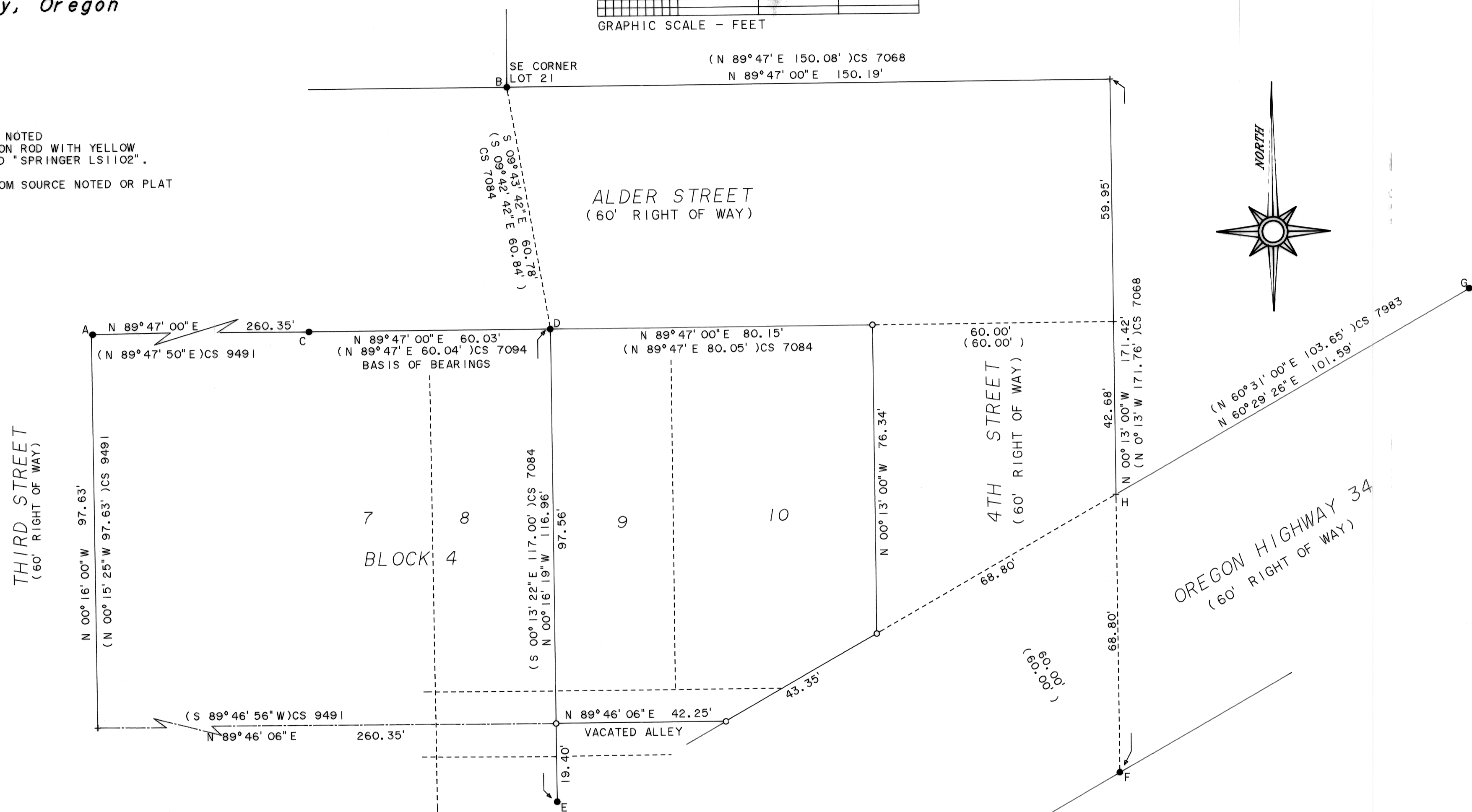
**Benton County**  
**Surveyor's Office**

C.S. FILE NO. 10425  
 FILING DATE 5-20-10  
 FILE SIZE 18x24



**LEGEND**

- FOUND MONUMENT AS NOTED
- SET 5/8" X 30" IRON ROD WITH YELLOW PLASTIC CAP MARKED "SPRINGER LS1102".
- + COMPUTED POINT
- ( ) DATA OF RECORD FROM SOURCE NOTED OR PLAT OF TOWN OF ALSEA.



**NARRATIVE**

This survey was done to monument the corners of Lots 9 and 10 in Block 4 of the TOWN OF ALSEA including the portion of the vacated alley which attaches thereto as described in the deed recorded as document number 2009-459492, Benton County Records. The basis of bearings is along the South line of Alder Street from CS 7094. The West line of Lot 9 was determined by holding monuments at "D" and "E". The East line of Lot 10 was determined by holding the record 60 foot width of 4th Street using the record bearing of N 00° 13' W from monument "F". The North line of Lots 9 and 10 was calculated by extending the line easterly through monuments "A", "C", and "D". The center of the vacated alley was determined by holding the record distance southerly from monument "A" and holding the record angular relationship between the South line of Alder Street and the center of the alley based on CS 9491. The Northerly line of Highway 34 was computed by holding the monument at "G" and a point 60.00 feet northwesterly from the monument at "F". There was a bent and leaning 5/8" iron rod found 2.15 feet S 59° 07' W from point "H". This was apparently the rod set by CS 7983. Field measurements were made with a 1-second reading electronic total station. Pipe measurements are inside diameter.

**MONUMENT TABLE**

- |   |  |
|---|--|
| A | 5/8" IRON ROD WITH ORANGE PLASTIC CAP MARKED "DARRYL HARMS PLS 1079" FROM CS 9491. |
| B | 5/8" IRON ROD WITH YELLOW PLASTIC CAP MARKED "MSS INC RLS1012" FROM CS 7068.       |
| C | 1/2" IRON ROD FROM CS 7094.  |
| D | 1/2" IRON ROD FROM CS 7084.  |
| E | 1/2" IRON ROD FROM CS 7084.  |
| F | 1/2" IRON PIPE SHOWN ON CS 7068.   |
| G | 5/8" IRON ROD WITH YELLOW PLASTIC CAP MARKED "NORTHSTAR PLS 1823" FROM CS 7983.    |

REGISTERED  
 PROFESSIONAL  
 LAND SURVEYOR  
*Norman D. Springer*  
 OREGON  
 JULY 22, 1977  
 NORMAN D. SPRINGER  
 1102  
 RENEWAL DATE 6/30/12

SPRINGER SURVEYING  
 37056 MOSS ROCK DRIVE  
 CORVALLIS, OREGON 97330  
 PHONE: (541) 745-5798