

1050

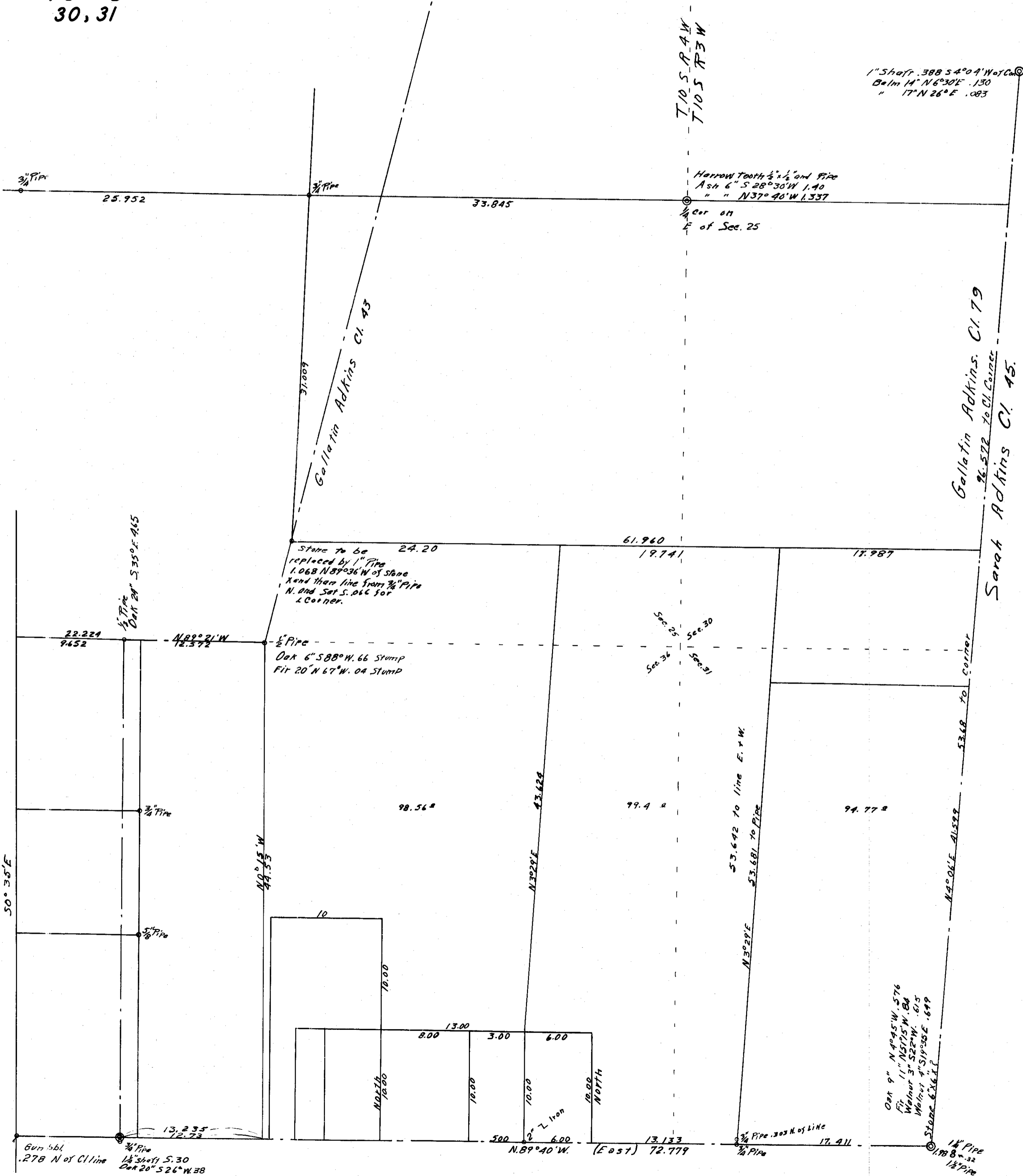
1050

10-4
25,36
10-3
30,31

COUNTY SURVEY #163

C.S. 1050 F.B. 37-47

SCALE 1" = 6 CHAINS



1050

FB 37, Pg 47-49
CS# 1050

County Survey 163 Cont.
T.10 S. R. 3 + 4 W

For A.F. Luther - Dec 16, 1927
Began at a $\frac{3}{4}$ " pipe at
S.W. Cor. Gallatin Adkins C. 1, 43
and 79

A 13.235

2.457 2.457

B -3 1/5

15.000 14.976

5.000 +1 1/5

5.000 -3 1/5

2.804 2.801

5.000 -2 1/5

4.694 4.659

5.000 -5

1.705 1.705

E 15.000

2.405 2.403

40.000

1.545

10.000

2.136

23.000
22.430
23.000
23.000
19.133
19.133

S. 89° 40' E.

S. 89° 40' E

1008 Set $\frac{3}{4}$ " pipe

S. 89° 40' E True = N 89° 58' E

13° 50' R. to N.E. Cor. C1. 37

Back to E - .008

86° 31'

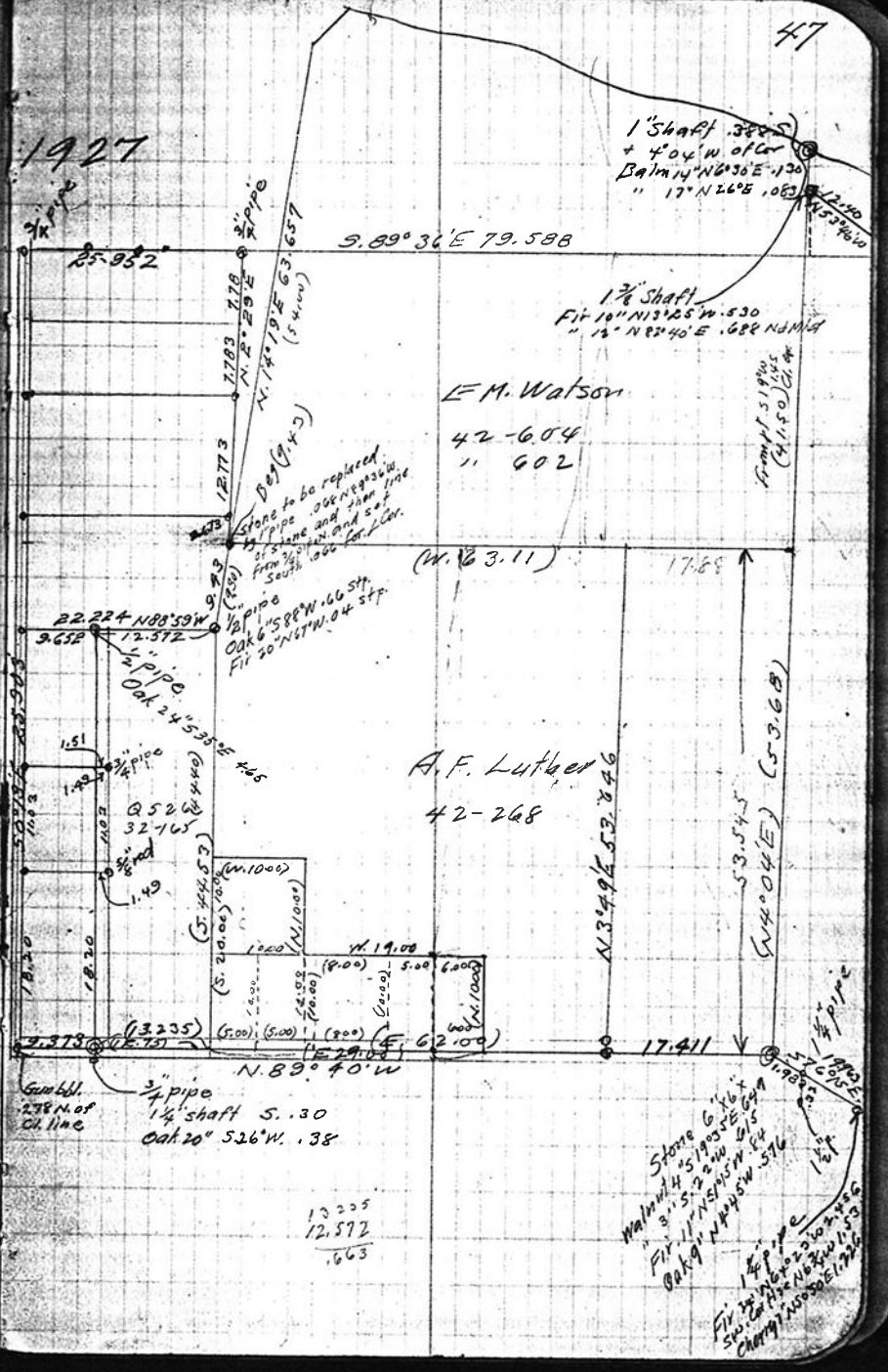
N 3° 49' E

True = N 3° 37' E

Set $\frac{3}{4}$ " pipe Oak 5' E. 062

13.235
23.000
19.133
17.411
12.779

1927



1 Shaft 3 1/2"
+ 404' W of Cor
Bal 14° N 63° E .130
" 17° N 26° E .063

1 3/4 Shaft
Fit 10" N 13° 25' W .530
" 12° N 83° 40' E .682 N.M. 1/4

E.M. Watson

42-604
" 602

(W. 12 3.11)

A.F. Luther

42-268

3 1/2 pipe
1 1/4 shaft 5.30
Oak 20' 526' W. 1.38

13.235
12.572
.663

Stone 6' x 6'
Walnut 4' 5' 1905 E 649
" 3' 5' 2' 2' 1915 E 514
Oak 9' N 44° SW 576
1 1/4 pipe
Fit 20' N 62° 30' W 1.75
" 17° N 26° E 1.226
Cherry 10' 5' 1905 E 1260

Back to G.

86°31'R

9.618

5.89°40'E

7.740

80°28'L +.46 fence

5.000

N 9°52'E

+ .980

5°04'L

TO
85°32'

7.308

N 4°48'E correct 0° 23'W = N 4°25'E

Set .036 W. .05 W to post True bearing = N 7°04'E

25.000

bank of slough

R.177

84°10'L to pipe in road

10.000

R.555

7°05'L

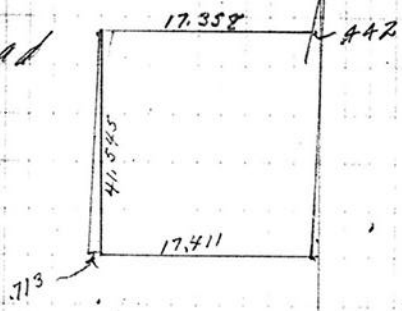
R.597

2.577 - .012 = 2.565

N. 2°17'W.

hit 1" shaft which is

.388 (54°04'W) of Cl. cor.



41.599
4.980
7.308

96.184
388

96.572
53.887
35.000
12.177
2.555
3.565

96.184

W. 17.411
W .713

18.124
E 17.352

W .766
E .442

W .324
W .320 = 0.23

96.142 W .644 .0067

0.32 E .32
284 W .28

.0365 .04

2.555
2.565
5.120
0.28

5.092 .00786

Set on C + 13 E

Turn 90°L

^{+3°}
5000

4.993

5000

4.997

.010

4

90°L

.130

93°29'K

^{-8°}
3.457

19.741

ord 5. of pipe