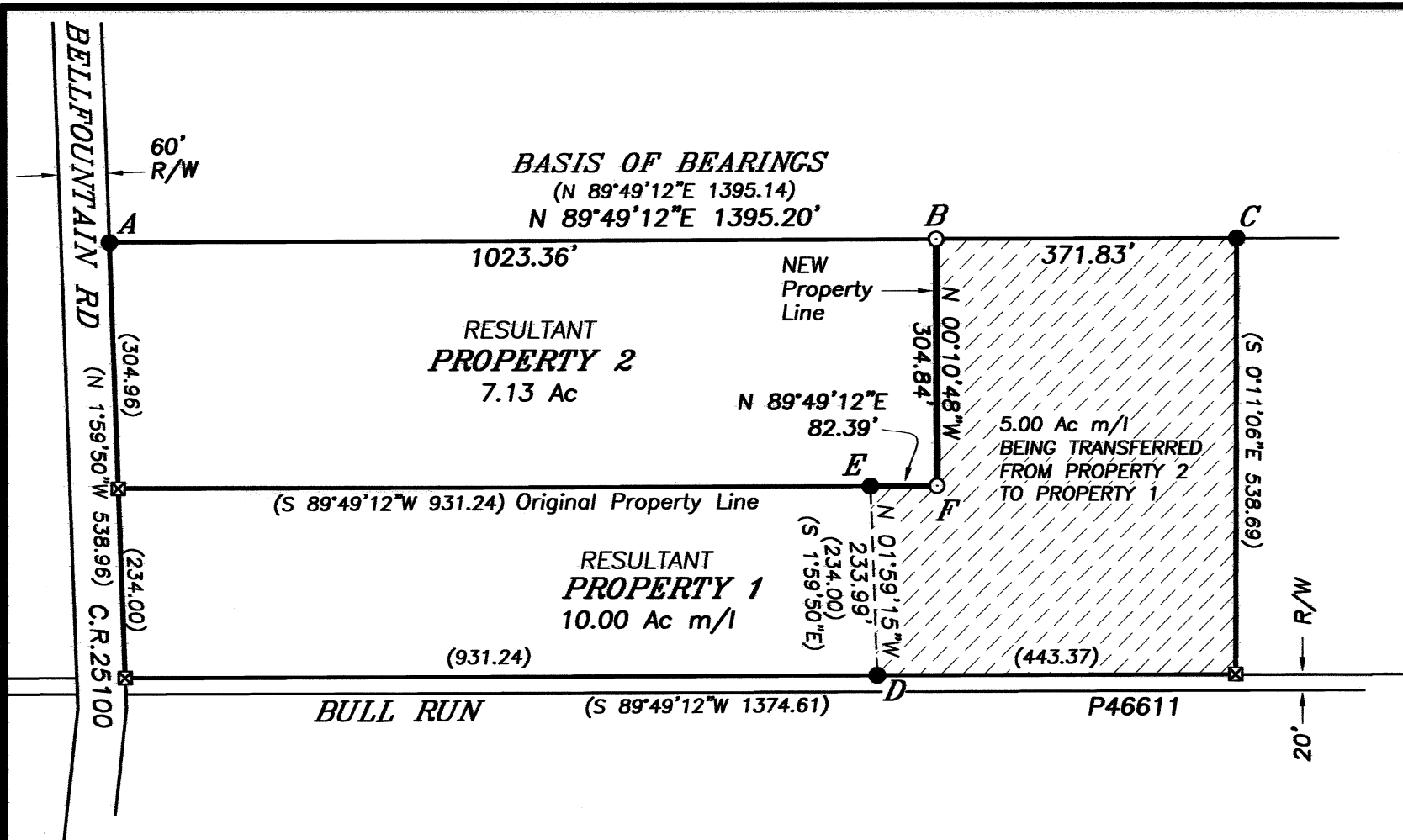
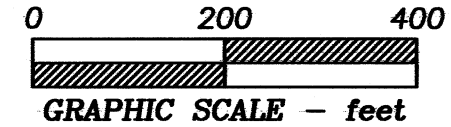


BENTON COUNTY  
SURVEYOR'S OFFICE

C.S. FILE NO. 10506  
FILING DATE 10-19-11  
FILE SIZE 11x17



- A -NW corner Parcel 1, PP 91-24.  
Monument is 6 ft north of corner of fences to E & S per CS 10428.
- B -Monument set per CS 10428 1.1 ft North of E-W fence.
- C -NE corner Parcel 1, PP 91-24.  
Monument is 1 ft west of fence "T" per CS 10428.
- D -SE corner Parcel 2, PP 91-24.  
Monument is at fence "T" per CS 10428
- E -NE corner Parcel 2, PP 91-24.  
Monument is at fence "T" per CS 10428.
- F -Monument set per CS 10428

LU-11-044  
PROPERTY LINE ADJUSTMENT  
**APPROVED**

*Casey Fletcher* 10/19/2011  
Benton County Planning Official date

**LEGEND**

- .....Monument by Partition Plat 1991-024, found by CS 10428.
- .....Monument set by CS 10428.
- ⊠.....Monument by Partition Plat 1991-024 not searched for by CS 10428.
- ( ).....Record data from Partition Plat 1991-024.

**NARRATIVE**

This map is the result of Benton County Community Development Department File No. LU-11-044. It represents a Property Line Adjustment Survey that was initiated in 2007 as LU-07-092. The land owners did not complete all the County's conditions of approval for the first application. In the meantime, Parcel 1 of the Partition was sold to Casey Fletcher. Danny Howell remains the owner of Parcel 2.

I did not perform any field work for this map. Data matches, or is computed from CS 10428.

**PROPERTY LINE ADJUSTMENT SURVEY**

for  
**DANNY C. HOWELL &  
CASEY FLETCHER**  
on  
**PARCELS 1 & 2**  
**PARTITION PLAT 1991-024**  
in  
**SE 1/4 SECTION 24  
T 14 S, R 6 W, W.M.**  
**BENTON COUNTY, OREGON**

OCTOBER 11, 2011

REGISTERED  
PROFESSIONAL  
LAND SURVEYOR

OREGON  
JULY 21, 1992  
W. L. LAUER  
2558

RENEWS 12/31/2012

**NORTHSTAR SURVEYING, INC.**

720 N.W. 4th Street  
Corvallis, Oregon 97330  
Phone: 541-757-9050