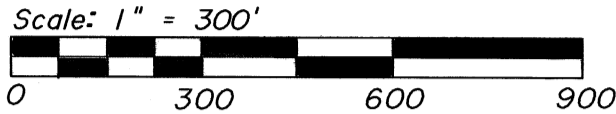


Benton County
Surveyor's Office

C.S. FILE NO. 10563
 FILING DATE 10-22-12
 FILE SIZE 14x17

RECORD OF SURVEY
 for **STARKER FORESTS, INC.**
 in the NE1/4 SECTION 10, T10S, R6W, W.M.
 POLK AND BENTON COUNTIES, OREGON
 JULY 18, 2012



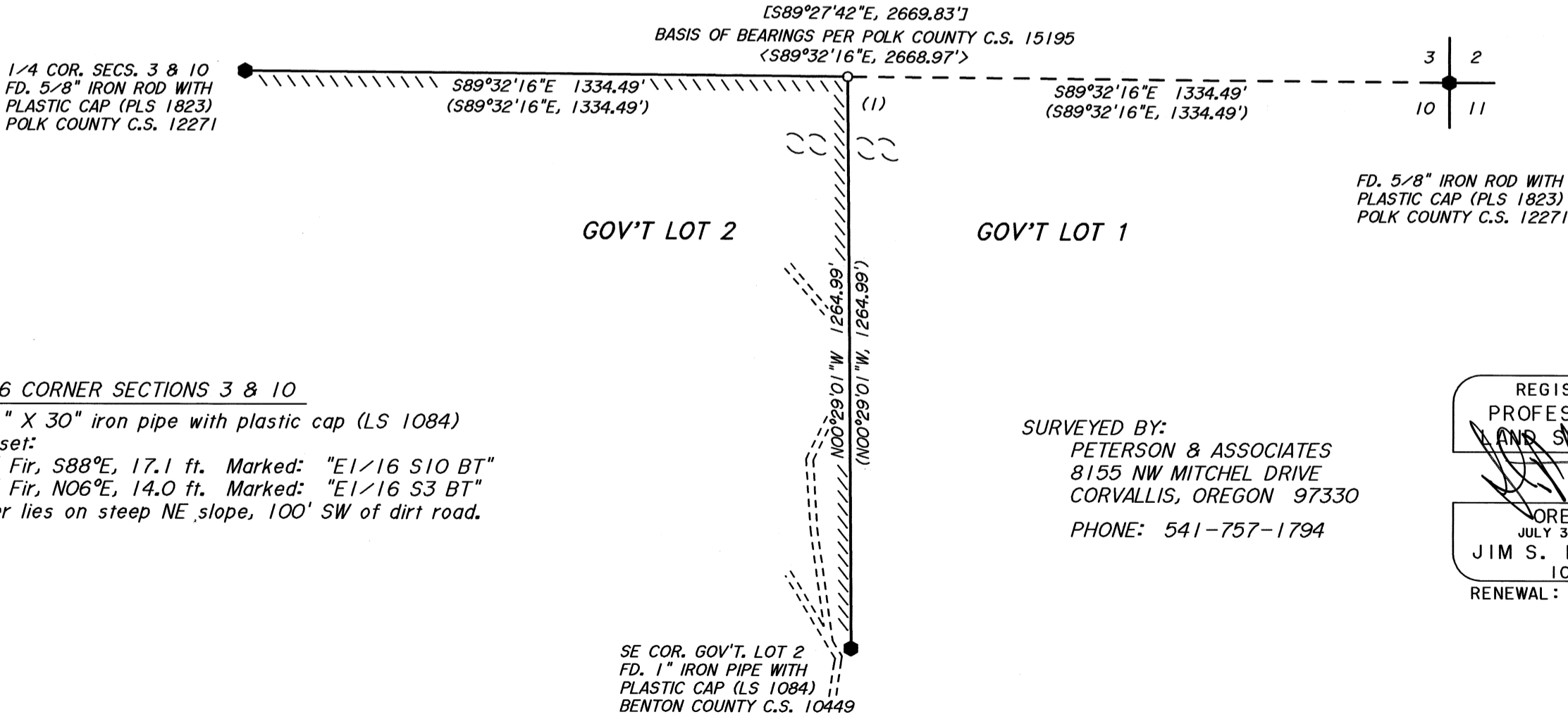
NARRATIVE

The purpose of this survey is to establish the E1/16 corner of Sections 3 and 10 and to mark the indicated boundary lines.

The E1/16 corner was set at midpoint between the found monuments at the Northeast corner of Section 10 and the 1/4 corner of Sections 3 and 10, as per ties to our control for Benton County C.S. 10449.

Monuments found as per Polk County C.S. 12271 and Benton County C.S. 10449 were held as control for this survey.

- Monuments found as noted
- Monuments set as noted
- < > Data of record per Polk County C.S. 15195
- [] Data of record per Polk County C.S. 12866
- () Data of record per Benton County C.S. 10449
- //// Boundary lines marked with 6' fiberglass posts, blue painted blazes, and blue flagging
- ==== Approximate road location
- ~~~~ Approximate ridge top
- BT distances measured are to center of tree
- Iron pipe diameters are inside measure



(1) E1/16 CORNER SECTIONS 3 & 10
 Set 1" X 30" iron pipe with plastic cap (LS 1084)
 BT's set:
 8" Fir, S88°E, 17.1 ft. Marked: "E1/16 S10 BT"
 8" Fir, N06°E, 14.0 ft. Marked: "E1/16 S3 BT"
 Corner lies on steep NE slope, 100' SW of dirt road.

SURVEYED BY:
 PETERSON & ASSOCIATES
 8155 NW MITCHEL DRIVE
 CORVALLIS, OREGON 97330
 PHONE: 541-757-1794

REGISTERED
 PROFESSIONAL
 AND SURVEYOR

OREGON
 JULY 31, 1976
 JIM S. PETERSON
 1084
 RENEWAL: 12-31-12