

DRAWING NUMBER
10577
SAFCO PRODUCTS • NEW HOPE, MINNESOTA
REORDER BY PART NUMBER 6552

DRAWING NUMBER
10577
SAFCO PRODUCTS • NEW HOPE, MINNESOTA
REORDER BY PART NUMBER 6552

LINE POSTING SURVEY
for **HULL-OAKES LUMBER CO.**
in the E1/2 SECTION 31, T10S, R7W, W.M.
BENTON COUNTY, OREGON
DECEMBER 24, 2012

Benton County
Surveyor's Office

C.S. FILE NO. 10577
FILING DATE 1-10-13
FILE SIZE 14x17

(1) ANGLE POINT NO. 1 - SECTION 31

Found 1" drill steel per C.S. 3776
BT's found:
8" Fir Snag, S51°W (S12 1/2°W, 7.8 ft.) Scribing visible
28" Fir, (South, 20.8 ft.) Healed face
Corner lies at top of cut bank, 30' East of railroad tracks.

(2) ANGLE POINT NO. 2 - SECTION 31

Found 1" drill steel per C.S. 3776
BT's found:
12" Fir Uproot, (N69°W, 11.3 ft.) No marks visible
20" Fir, (N59°E, 10.2 ft.) Healed face
Corner lies on Southwest slope.

(3) 1/4 CORNER SECTIONS 31 & 32

Found 1" iron pipe with plastic cap (LS 1084)
with stone alongside per BCCR 107200140.
BT's found:
Rotted Fir Stump, (N30°W, 1.090 chs.) Healed face
50" Triple Maple, (N54°E, 1.052 chs.) Healed face
36" Maple Uproot, (N12 1/4°W, 0.473 chs.) Healed face
30" Maple Snag, (N08°E, 32.5 ft.) No marks visible
20" Maple, (S53°E, 23.3 ft.) Healed face
28" Maple, (S22°E, 27.7 ft.) Scribing visible
24" Maple, (S72°W, 42.2 ft.) Scribing visible
Corner lies at toe of hill on North edge of ditch.

(4) ANGLE POINT NO. 3 - SECTION 31

Found 1" drill steel per C.S. 3776
BT's found:
22" Alder, (S62°E, 38.2 ft.) Healed face
Corner lies on Southwest slope, 60' East of railroad.

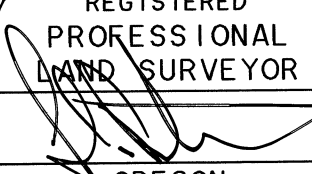
(5) S1/16 CORNER SECTIONS 31 & 32

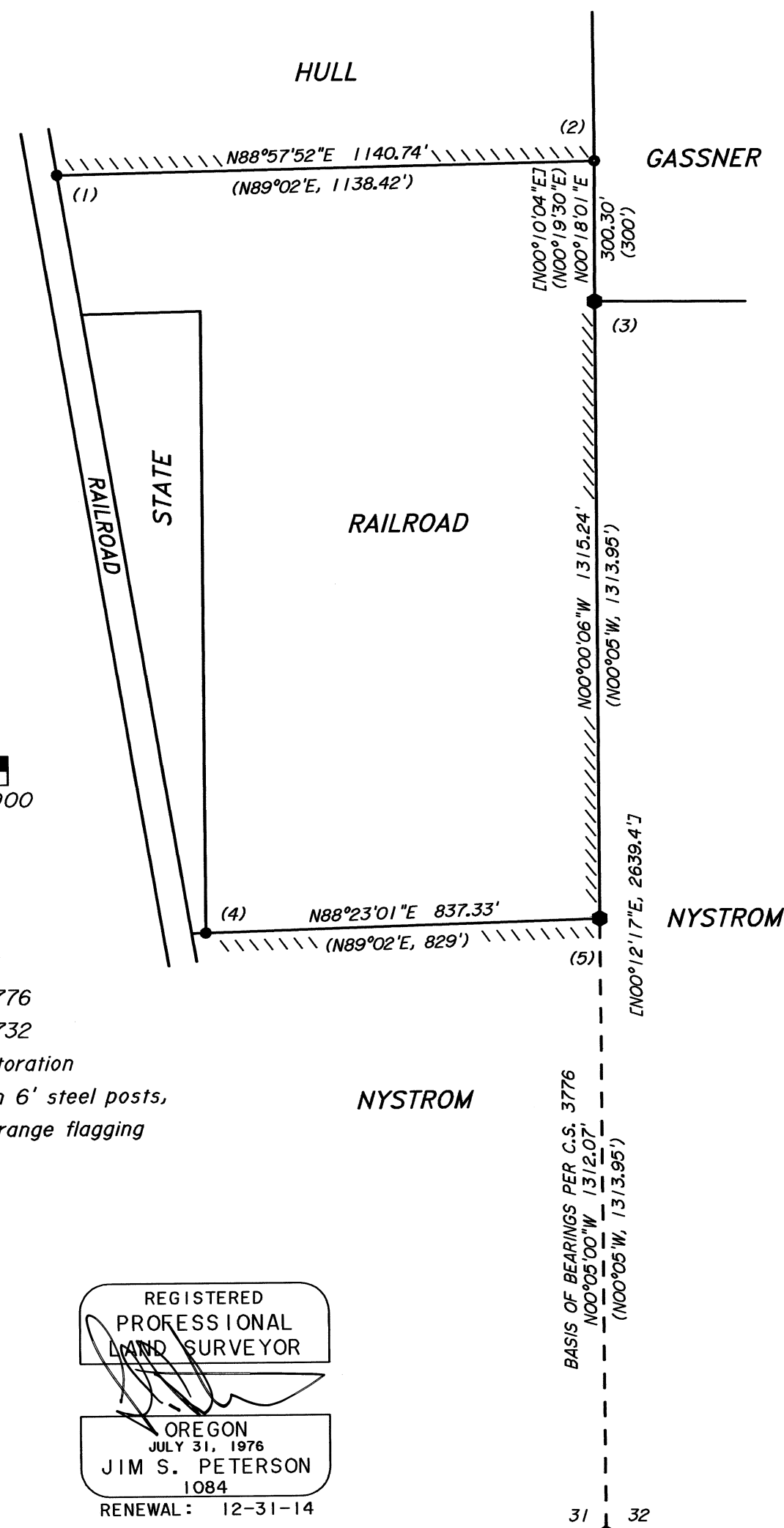
Found 1" drill steel per C.S. 3776
BT's found:
10" Fir, (N72°W, 7.6 ft.) Healed face
28" Fir, (S27°E, 34.5 ft.) Healed face
Corner lies on Northwest slope, 170' East of dirt road,
and 60' West of gravel road.

Scale: 1" = 300'
0 300 600 900

- ● Monuments found as noted
- () Data of record per C.S. 3776
- [] Data of record per C.S. 5732
- BCCR Benton County Corner Restoration
- Boundary lines marked with 6' steel posts,
pink painted blazes, and orange flagging

SURVEYED BY:
PETERSON & ASSOCIATES
8155 NW MITCHEL DRIVE
CORVALLIS, OREGON 97330
PHONE: 541-757-1794

REGISTERED
PROFESSIONAL
LAND SURVEYOR

OREGON
JULY 31, 1976
JIM S. PETERSON
1084
RENEWAL: 12-31-14



FD. 3 1/4" BRASS CAP
AS PER C.S. 5732 FOR
ORIGINAL CLOSING CORNER