

C.S. # 1058

Hardcopy 10-6 # 2

also see notes in file

F. B. 37-62

CS#
1058

FA#37
CS. 51

67

Survey for Bevans et al.

Sec. 12, T. 10 S. R. 6 W.

Sec 1,

point .050 S. of Cor.
hit .053 W. of Cl. Cor
E pipe

1.463

Set 3/4" pipe 45° W + 0° N

-6°30'
5.000 4.970
3.287 3.287
-20°30'
3.805 3.801
-8°30'
3.654 3.614
6.128 6.128
+4°0'
4.270 4.260
5.100 5.097

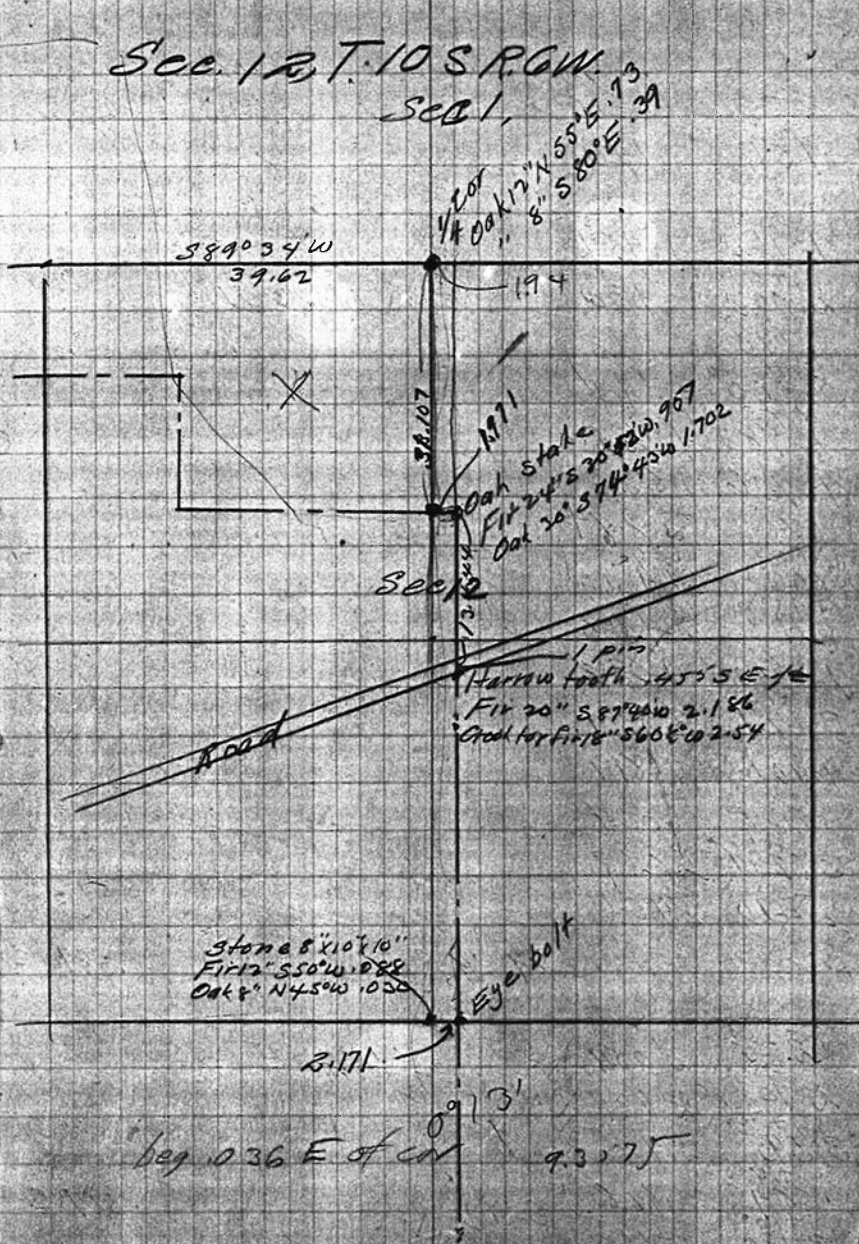
E.312
E.022
1.334
0.27
3.61
0.26
5.271
0.12
5.030
0.18
0.19
0.19
6.537
0.21
6.326
1.43
5.89

13.44 .053
0°15'
1.463 1.455W
.053
312 443.4W
1.828 419W
2.171
5.1343 1403W
1.0043
5.387W
= 0°5' E .361W
0.334W
312W

hit .312 E of corner

Set 2" pipe

Fir 14" S76°E .535
Fir 24" S37°E .488
Oak 16" N55°E .73
Oak 14" S82°E .39 dead



Stone 8"x10"x16"
Fir 12" S50°W .088
Oak 8" N45°W .020

Eye bolt

beg .036 E of CN 9.3075