

**Benton County
Surveyor's Office**

C.S. FILE NO. 10587
FILING DATE 3-8-13
FILE SIZE 18x24

PROPERTY LINE ADJUSTMENT SURVEY

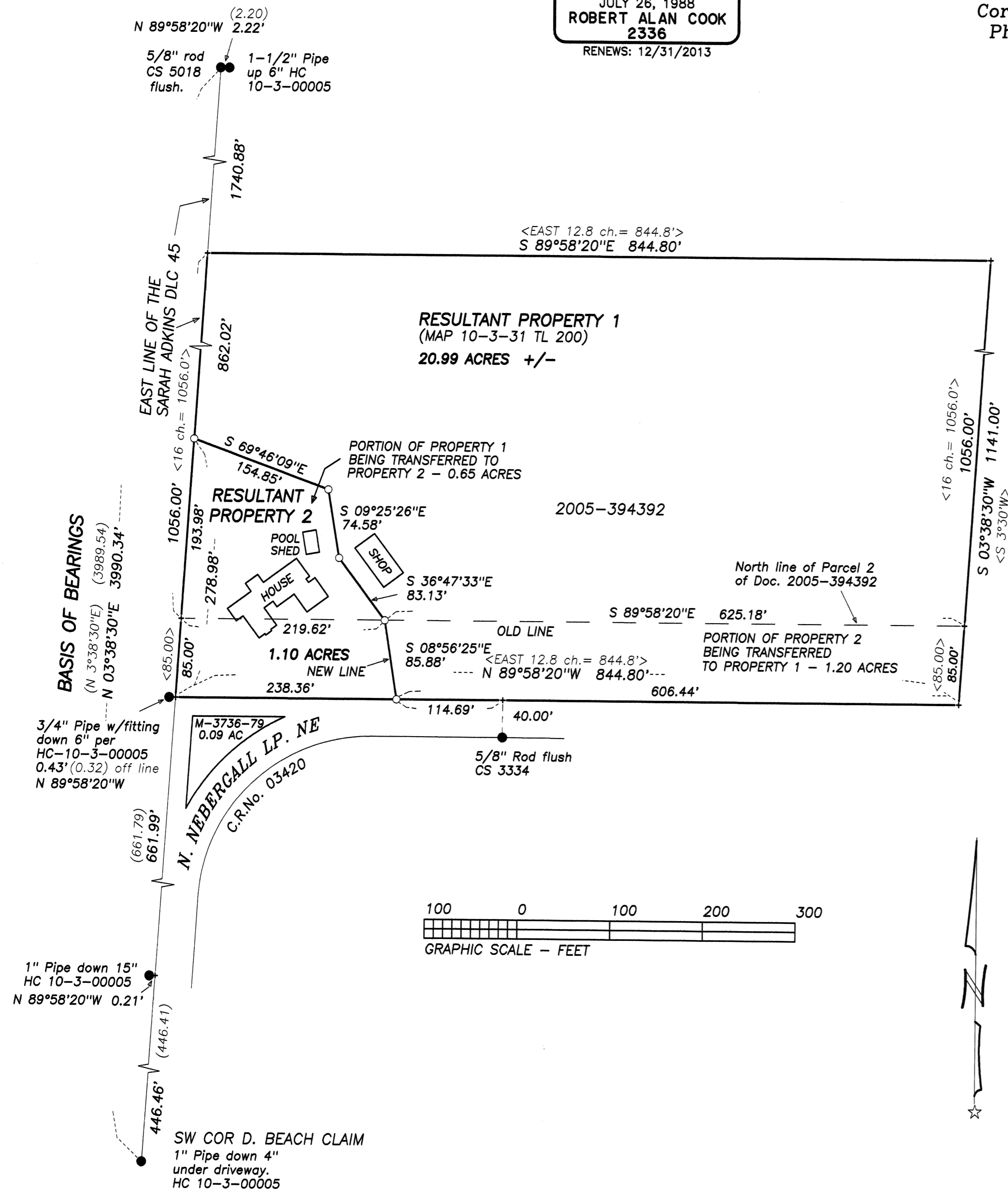
for
VIRGINIA CHRISTIE

in the
NE 1/4 SECTION 31
T 10 S, R 3 W, W.M.
BENTON COUNTY, OREGON

NOVEMBER 9, 2012
FILE No. LU-12-039

REGISTERED
PROFESSIONAL
LAND SURVEYOR
Robert Alan Cook
OREGON
JULY 26, 1988
ROBERT ALAN COOK
2336
RENEWS: 12/31/2013

NORTHSTAR SURVEYING, INC.
720 N.W. 4th Street
Corvallis, Oregon 97330
Phone: 541-757-9050



PROPERTY LINE ADJUSTMENT LU-12-039
APPROVED
J.C. Bentley 3-8-2013
planning official date
for Greg Verret

LEGEND

-Found Monument as noted.
 -Set Monument: N*MON = 5/8" x 30" rebar with a red plastic cap stamped " NORTHSTAR SURVEYING ".
 - +Computed Position, nothing found or set.
- Data of, or computed from, the following:
()..CS 5018 < >..Doc. 2005-394392, Benton County Records
Pipe dimensions are inside diameter.

NARRATIVE

The purpose of this survey was to satisfy Condition of Approval Number 4 of Benton County Community Development File No. LU-12-039; to adjust the property line between these tracts to separate the residence from the farmland.
The key to this survey was to establish the North right-of-way line of Nebergall Loop and the East line of the Sarah Adkins DLC.
I found a rod from CS 3334 on the south line of the right-of-way and held the 40 foot width perpendicular north from a line extended from the 3/4" pipe with fitting at the old bend in the right-of-way line.
I held the rod set per CS 5018 on the north end and the pipe called to be the SW corner of the Beach Claim on the south end to be the East line of the Adkins Claim. CS 5018 also called the old pipes tied between to be off line a little.