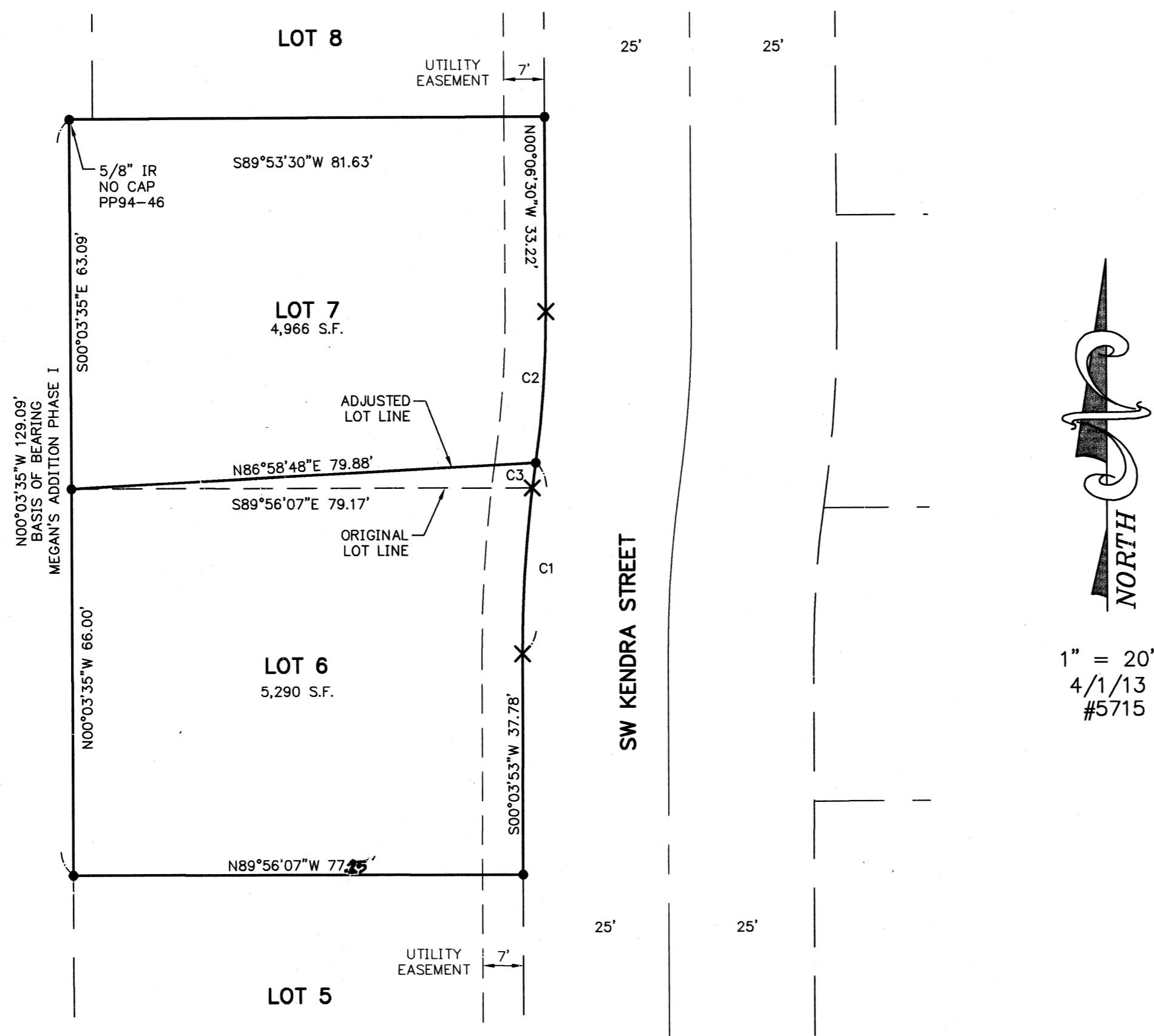


**PROPERTY LINE ADJUSTMENT
FOR ROTH BUILT HOMES
IN MEGAN'S ADDITION PHASE I
LOCATED IN THE NE 1/4 OF SEC. 7,
T. 12 S., R. 5 W., WILLAMETTE MERIDIAN
CITY OF CORVALLIS, BENTON COUNTY, OREGON**

**Benton County
Surveyor's Office**

C.S. FILE NO. 10596
FILING DATE 5-1-13
FILE SIZE 18x24

BY:
MULTI/TECH ENGINEERING SERVICES, INC.
1155 13TH ST. S.E. SALEM, OREGON 97302
503-363-9227



NOTES:

1. ALL BEARING AND DISTANCES ARE RECORD AND MEASURED PER "MEGAN'S ADDITION PHASE I".
 2. ALL MONUMENTS FOUND IN GOOD CONDITION AND WITHIN 0.2' OF THE SURFACE OF THE GROUND UNLESS OTHERWISE NOTED.
- = FOUND MONUMENT PER "MEGAN'S ADDITION PHASE I"
 - X = CALCULATED LOCATION PER "MEGAN'S ADDITION PHASE I" MONUMENT LOST DURING CONSTRUCTION.
- IR = IRON ROD

NARRATIVE

THE PURPOSE OF THIS PROPERTY LINE ADJUSTMENT WAS TO ADJUST THE LINE BETWEEN THE TWO DWELLING ON LOTS 6 & 7 OF MEGAN'S ADDITION PHASE I, PER THE CITY OF CORVALLIS LAND USE CASE NUMBER PLA12-00003.

THE BASIS OF BEARING WAS HELD BETWEEN THE MONUMENTS ON THE WEST LINE OF LOTS 6 & 7, PER MEGAN'S ADDITION PHASE I.

ALL THE ORIGINAL MONUMENTS WERE FOUND AS SHOWN ON THE PLAT IN GOOD CONDITION AND WITHIN 0.2' OF THE SURFACE OF THE GROUND UNLESS OTHERWISE NOTED. THE ORIGINAL EAST CORNER OF LOT 6 & 7 WAS LOST AND WILL NOT BE RESET TO AVOID CONFUSION IN THE FUTURE.

APPROVALS

David Young 4/2/13
PLANNING DIVISION MANAGER DATE
CASE NO. PLA12-00003

Gary A. Keul 04-03-13
CITY OF CORVALLIS ENGINEER DATE

CURVE DATA ALL RECORD AND MEASURED					
CURVE	RADIUS	DELTA	LENGTH	CHORD BEARING	DIST.
C1	225.00'	8°18'34"	32.63'	S04°13'08"W	32.60'
C2	175.00'	8°28'54"	25.91'	N04°07'57"E	25.88'
C3	225.00'	1°06'16"	4.34'	S07°49'16"W	4.34'

REGISTERED
PROFESSIONAL
LAND SURVEYOR

Robert D. Hamman

OREGON
JULY 13, 2004
ROBERT D. HAMMAN
64202LS

EXPIRES: 6-30-2013