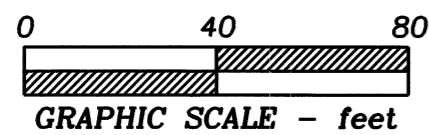


RECORD of SURVEY
for
MALCOLM & JOSEPHINE CORDEN
on
LOT 10, BLOCK 18
AVERY & BEACH ADDITION
in
SW QUARTER of SECTION 35
T 11 S, R 5 W, W.M.
CITY of CORVALLIS
BENTON COUNTY, OREGON

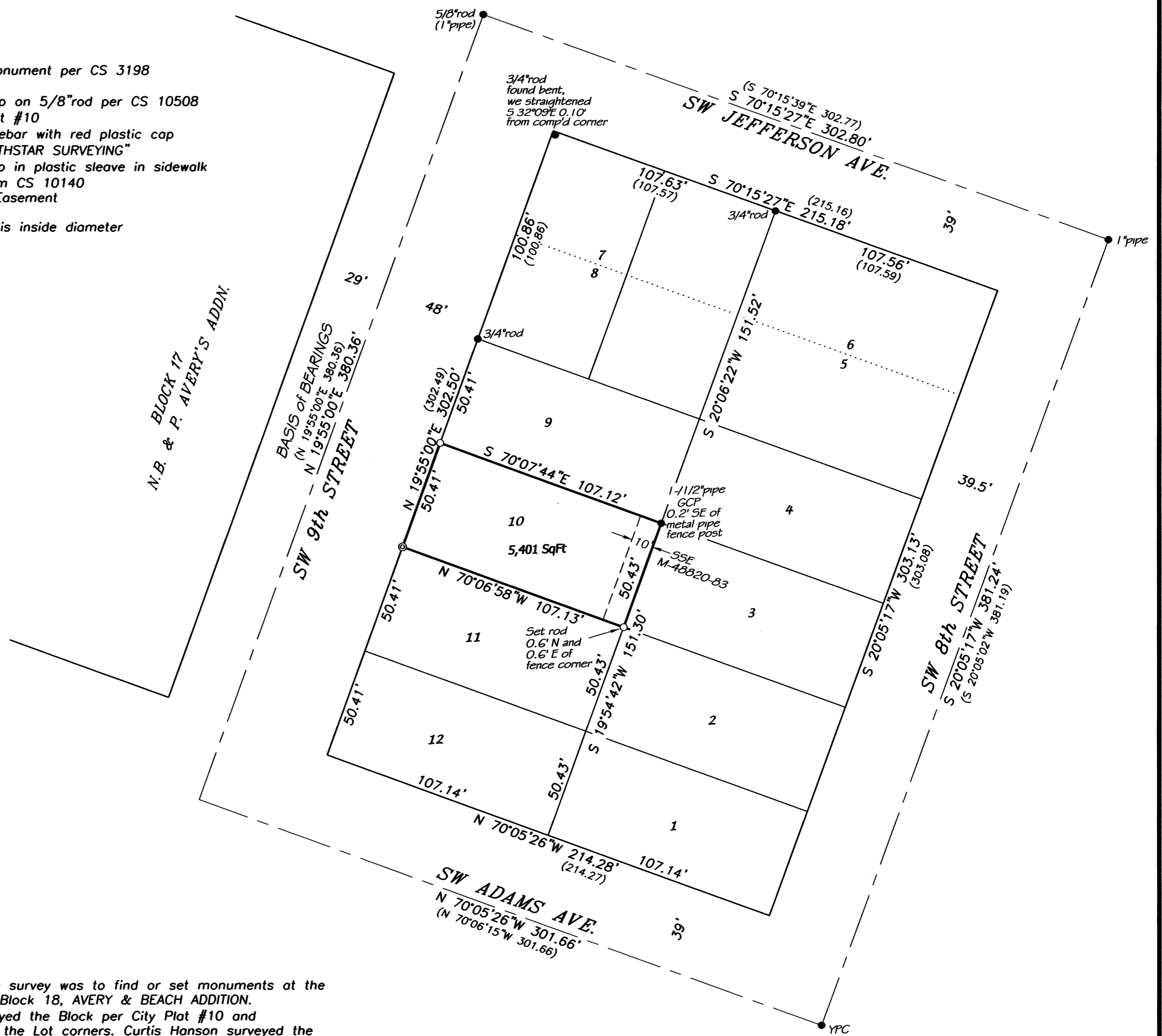
MAY 16, 2013



LEGEND

-Found survey monument per CS 3198 or as noted
- YPC...Yellow Plastic Cap on 5/8"rod per CS 10508
- GCP...Galloway City Plat #10
-Set 5/8"x 30" rebar with red plastic cap stamped "NORTHSTAR SURVEYING"
- ⊙.....Set 1" Brass cap in plastic sleeve in sidewalk
- ().....Record data from CS 10140
- SSE.....Sanitary Sewer Easement

NOTE: pipe dimension is inside diameter



NARRATIVE

The purpose of this survey was to find or set monuments at the 4 corners of Lot 10, Block 18, AVERY & BEACH ADDITION.

W.C. Galloway surveyed the Block per City Plat #10 and monumented many of the Lot corners. Curtis Hanson surveyed the Block in 1959 and set monuments at the corners of Lots 7 and 8. Mr. Hanson held monuments he (apparently) found at the "centerline" intersections of the 4 streets. He held Mr. Galloway's street widths to compute the Block corners. We (Northstar Surveying) found 3 of 4 "centerline" intersection monuments, and several of Mr. Hanson's monuments, in 2002 (CS 10140) and computed the perimeter of the Block.

I found 3 of 4 "centerline" intersection monuments and several of Mr. Hanson's monuments. I also found a Galloway monument at the NE corner of Lot 10, but nothing at the NW or SE corners. As we did per CS 10140, I computed the intersection of the "centerlines" of Adams Ave. and 9th Street by distance - distance intersection, holding Mr. Hanson's distances from "centerline" monuments. I computed the Block corners by intersection of lines offset from the "centerlines" by the widths Mr. Galloway showed on City Plat #10. I held the Galloway pipe at the NE corner of Lot 10 and computed the SE Lot corner by proportionate measure relative to the computed SE corner of Lot 12. I held the Hanson rod at the NW corner of Lot 9 and computed the NW and SW corners of Lot 10 by proportionate measure relative to the computed SW corner of the Block.

REGISTERED
PROFESSIONAL
LAND SURVEYOR

W. L. Lauer

OREGON
JULY 21, 1992
W. L. LAUER
2558

RENEWS 12/31/2014

NORTHSTAR SURVEYING, INC.

720 N.W. 4th Street
Corvallis, Oregon 97330
Phone: 541-757-9050

BENTON COUNTY
SURVEYOR'S OFFICE

C.S. FILE NO. 10606
FILING DATE 6-21-13
FILE SIZE 18x24