

**Benton County
Surveyor's Office**

C.S. FILE NO. 10615
FILING DATE 7-25-13
FILE SIZE 14x17

LINE POSTING SURVEY
for **STARKER FORESTS, INC.**
in the **NW1/4 SECTION 9, T14S, R8W, W.M.**
BENTON COUNTY, OREGON
JULY 9, 2013

(1) ANGLE POINT NO. 1 - SECTION 9

Found 1/2" iron pipe - GHC 14-8-00003
BT's found:
36" Fir, (N61°40'E, 0.319 chs.) No marks visible
Corner lies on NW slope, 50' West of gravel road.

(2) ANGLE POINT NO. 2 - SECTION 9

Found 1/4" X 2" iron bar - GHC 14-8-00003
BT's set:
16" Fir, N64°E, 5.3 ft. Marked: "AP2 S9 BT"
8" Fir, S31°W, 13.7 ft. Marked: "AP2 S9 BT"
Corner lies on bench at intersection of old down fences North and East.

(3) ANGLE POINT NO. 3 - SECTION 9

Found 3/8" X 2" iron bar - GHC 14-8-00003
BT's set:
12" Fir, N35°W, 19.1 ft. Marked: "AP3 S9 BT"
Corner lies on Southwest slope.

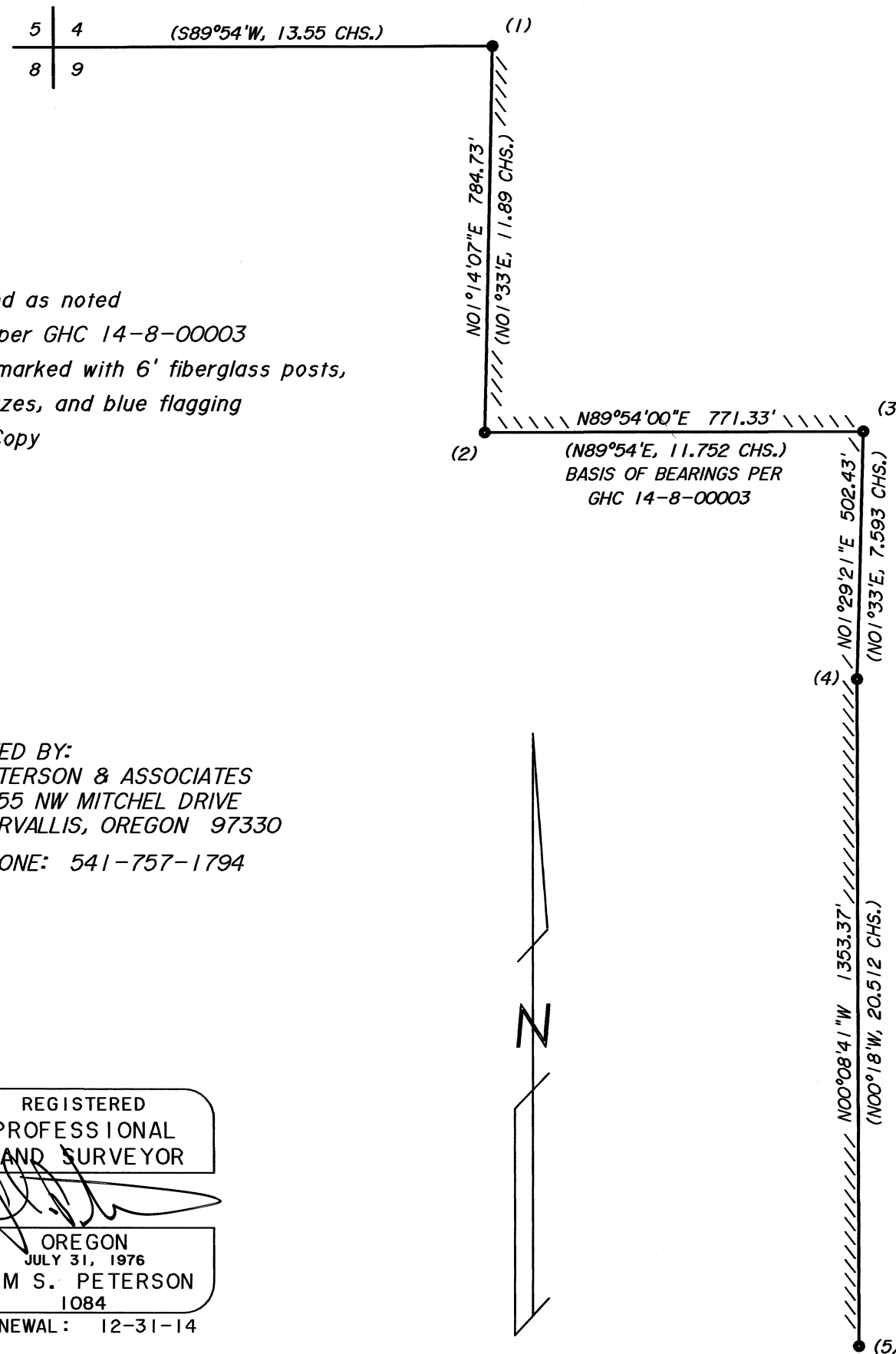
(4) ANGLE POINT NO. 4 - SECTION 9

Found 5/8" forked tie rod - GHC 14-8-00003
BT's set:
20" W. Fir, S36°W, 18.2 ft. Marked: "AP4 S9 BT"
Corner lies on North slope in North-South fence.

(5) ANGLE POINT NO. 5 - SECTION 9

Found gun barrel - GHC 14-8-00003
BT's set:
10" W. Fir, S60°E, 38.5 ft. Marked: "AP5 S9 BT"
Found 1/2" iron rod (C.S. 4426), N00°36'49"E, 65.83'
Corner lies on SW slope at intersection of fences North and East.

- Monuments found as noted
- () Data of record per GHC 14-8-00003
- \\\\\\ Boundary lines marked with 6' fiberglass posts, blue painted blazes, and blue flagging
- GHC Galloway Hard Copy



SURVEYED BY:
PETERSON & ASSOCIATES
8155 NW MITCHEL DRIVE
CORVALLIS, OREGON 97330
PHONE: 541-757-1794

REGISTERED
PROFESSIONAL
LAND SURVEYOR
[Signature]
OREGON
JULY 31, 1976
JIM S. PETERSON
1084
RENEWAL: 12-31-14

Scale: 1" = 300'
0 300 600 900