

**RECORD OF SURVEY  
for  
VENELL FARMS, INC.**

in the  
Richard Irwin DLC 51 & Isaac W. Winkle DLC 47  
S1/2 Section 15, N1/2 Section 22  
T13S, R5W, W.M  
Benton County, Oregon  
September 4, 2015

**NARRATIVE**

The purpose of this survey is to remonument the northeast corner of the Venell Farms property described in M18856-80, Benton County Deed Records, also being the southeast corner of the Virginia Schrock Trust et al property described in M168928-93 and M168929-93. The previously set monument at that corner was inadvertently destroyed by installation of a large irrigation mainline

Basis of Bearings is the south line of Section 15 between the southwest and southeast corners, S 89°41' E per Galloway Hard Copy (GHC) 13500013.

The east line of these properties was the former Southern Pacific Railroad property, now owned by Benton County. At the north end of the surveyed properties, I found monuments at A and B, firmly set, but varying from the record distance apart, and at the south end, I found the monuments at C and D, also varying somewhat from the record distances apart. I established the centerline of the railroad property midpoint between A and B and between C and D, and the east and west lines of the railroad property at 30 feet at right angles to the centerline.

The monuments at C and D were found 20" and 22" respectively below the gravel surface of Finley Road. I drove a 5/8" iron rod inside the pipes with the tops 6" below the surface to facilitate future recovery.

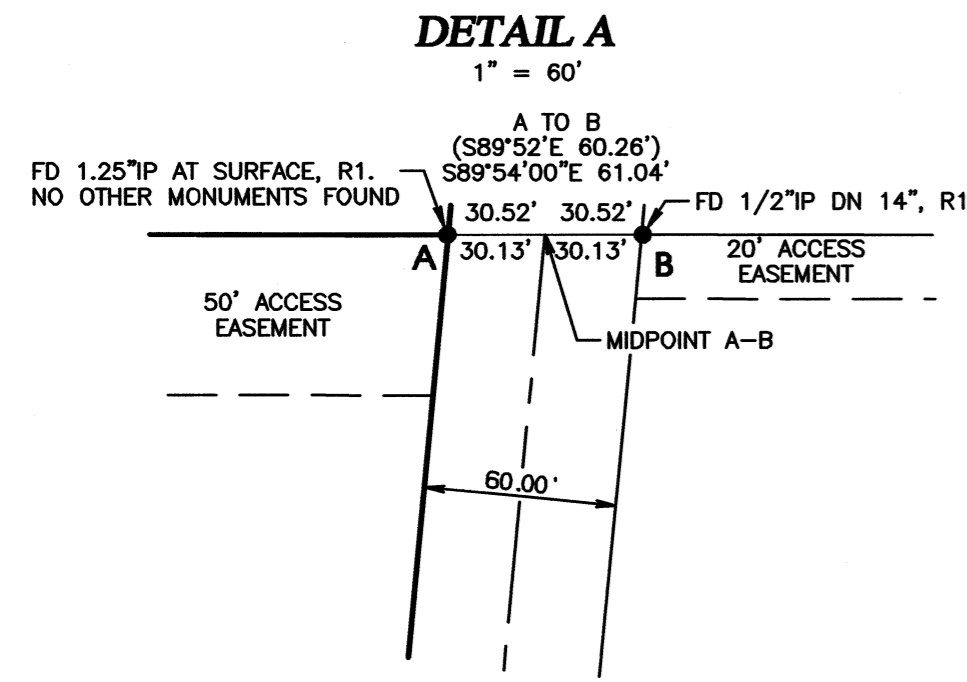
I searched at E for the original 3/4" pipe, without success, finding a 1.5" pipe of unknown origin as shown, not at the record position. At F, I found a 3/4"x16" pipe lying flat 6" below the surface but no evidence of the original position. I searched for the 1.25" shaft on the west right-of-way line of US Highway 99W at G, also without success. I believe the monuments at E, F and possibly G were destroyed during installation of irrigation mainline.

I reestablished the corner at E at the intersection of the west line of the railroad (Benton County) property and the south line of Section 15. As this position is occupied by a 24" plastic irrigation mainline, I set a 5/8" iron rod witness corner S5°31'05"W 5.00 feet from the true corner position.

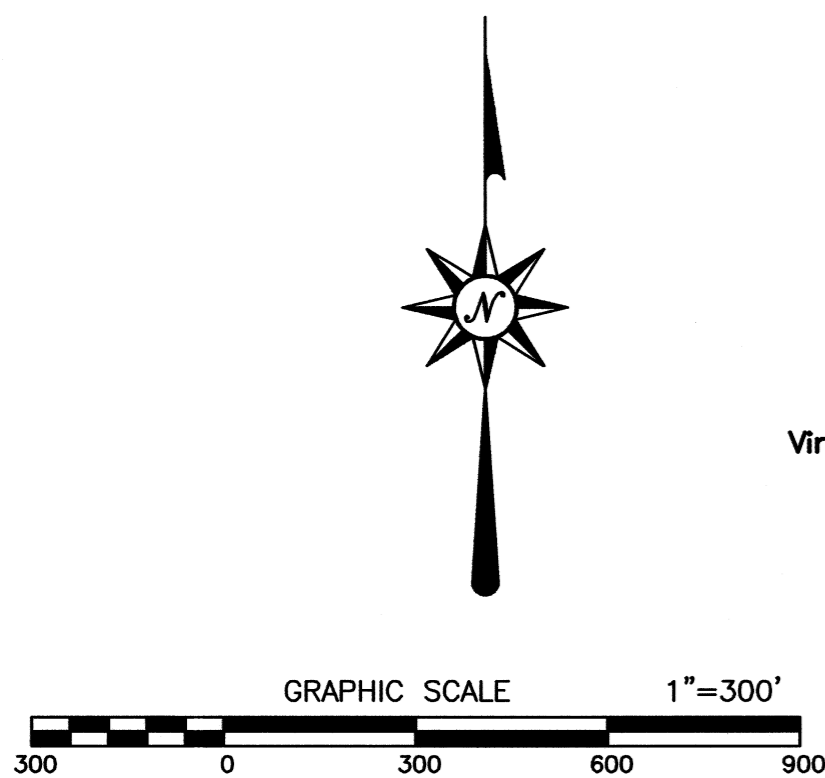
Monuments set 8/26/2015 and 9/04/2015. Equipment used: Topcon GTS-4 total station, X90D-OPUS GPS dual frequency receivers and Promark3 single frequency receivers.

**REFERENCES**

Surveys: GHC13500013, GHC13500016, CS2422, CS2518, CS5599, CS5785, CS9830, CS9880  
Restoration 135500400.  
Deeds: M168928-93, M168929-93, M18856-80

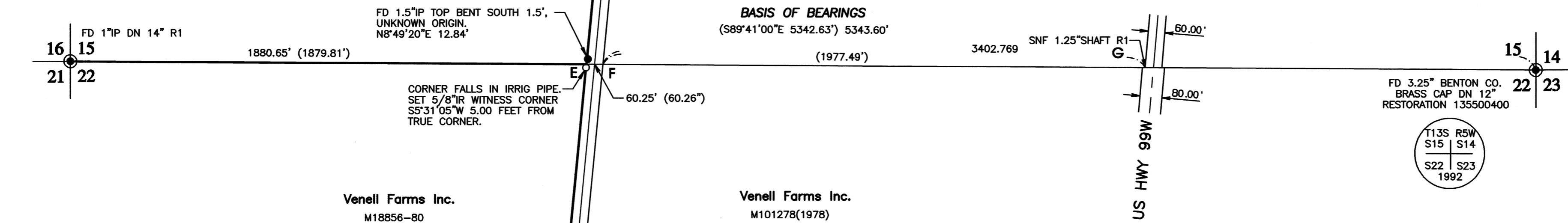


SEE DETAIL A



Virginia Schrock Tr.  
M168928-93  
M168929-93

Chintinimi Land Inc.  
M316555-02



Venell Farms Inc.  
M18856-80

Venell Farms Inc.  
M101278(1978)

**LEGEND**

- Found monument as noted.
- Set 5/8"x30" iron rod with yellow plastic cap marked "PARSONS PLS 1918".
- ◻ Found 1.25" pipe, set 5/8" iron rod with yellow plastic cap marked "PARSONS PLS 1918" inside, 6" below surface of road.
- ( ) Information of Record, GHC 13500013  
R1 - GHC 13500013
- FD Found
- IR Iron rod
- IP Iron pipe, inside measure
- CH Chains
- DN Below ground
- GHC Galloway Hard Copy
- SNF Searched, Not Found

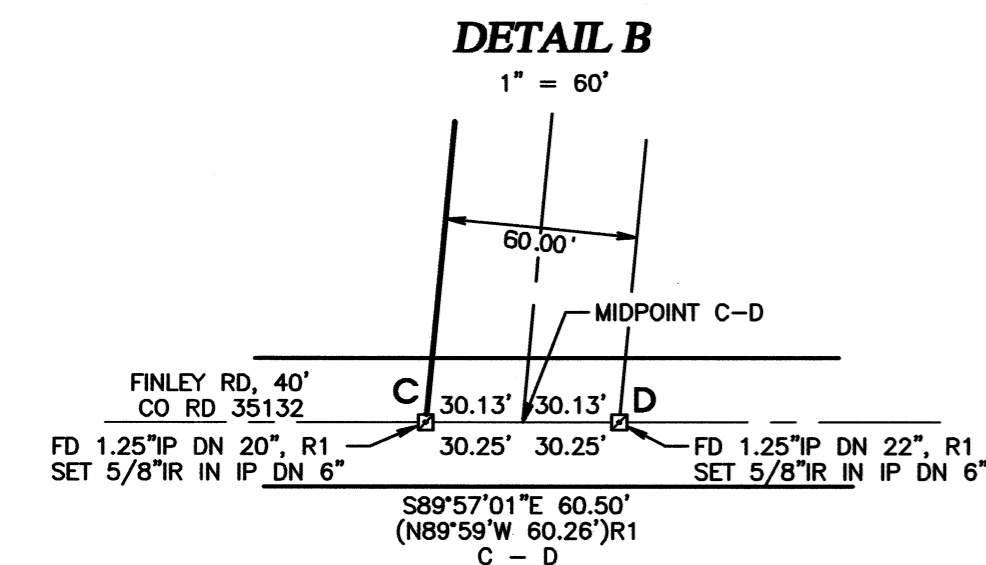
REGISTERED  
**PROFESSIONAL  
LAND SURVEYOR**

*Tyler B. Parsons*  
OREGON  
JULY 18, 1980  
**TYLER B. PARSONS**  
1918

EXP: 12/31/2016



**PARSONS SURVEYING**  
1915 S.E. Stone Street  
Corvallis, OR 97333  
(541) 752-7515  
Project No. 1525



SEE DETAIL B