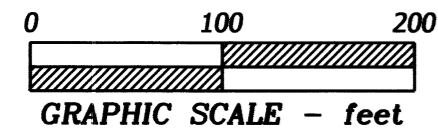


PROPERTY LINE ADJUSTMENT SURVEY
for
MARY'S PEAK INDUSTRIAL CENTER
and
MILLER PLANT, LLC
in
SW 1/4 of SECTION 11
T 12 S, R 6 W, W.M.
BENTON COUNTY, OREGON

JULY 16, 2015



LEGEND

-Found monument - 5/8" iron rod with red cap set per Partition Plat 2008-023, or as noted.
- RPC..Red Plastic Cap on 5/8" rod by CS 8559
-Set 5/8"x 30" rebar with red plastic cap stamped "NORTHSTAR SURVEYING"
- ().....Record data from Partition Plat 2008-023
- *.....Computed data

LU-15-046
PROPERTY LINE ADJUSTMENT
APPROVED

W. L. Lauer 10/15/2015
Benton County Planning Official

REGISTERED
PROFESSIONAL
LAND SURVEYOR

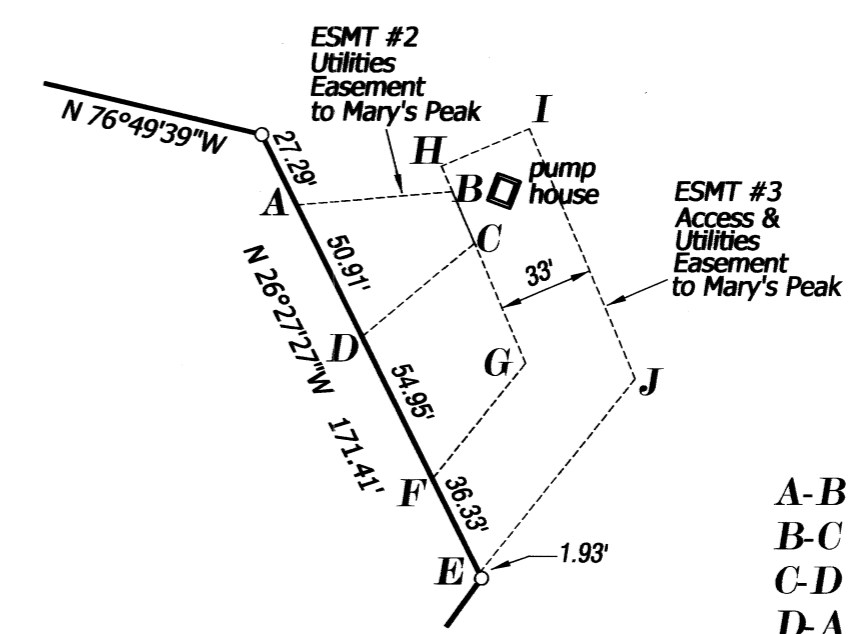
W. L. Lauer
OREGON
JULY 21, 1992
W. L. LAUER
2558
RENEWS 12/31/2016

NORTHSTAR SURVEYING, INC.
720 N.W. 4th Street
Corvallis, Oregon 97330
Phone: 541-757-9050

NARRATIVE

This survey is the result of Benton County Community Development Department File No. LU-15-046. It represents a Property Line Adjustment to transfer 4.5 acres of Mary's Peak Industrial Center's Parcel 1, Partition Plat 2008-023 to the adjacent Miller Plant, LLC tract.
We located the sufficient monuments from Partition Plat 2008-023 and computed other corners using data from that Plat, CS 9305, CS 8559, CS 5257 and deeds. The centerline of Mary's River is the north line of both properties. Its location is approximate - based on digitizing from an aerial photo (see the Narrative for Partition Plat 2008-023). Thus the area of each property is approximate.
The transfer deed will create the new easements shown (benefiting Mary's Peak). Mary's Peak Industrial Center is retaining the water rights to the well served by the pump house shown hereon.

DETAIL
NOT TO SCALE



- EASEMENT #2**
- A-B N 85°04'37"E 54.26'
 - B-C S 23°06'29"E 19.47'
 - C-D S 50°21'39"W 50.67'
 - D-A N 26°27'27"W 50.91'
- EASEMENT #3**
- E-F N 26°27'27"W 36.33'
 - F-G N 38°48'19"E 51.42'
 - G-H N 23°06'29"W 74.22'
 - H-I N 66°53'31"E 33.00'
 - I-J S 23°06'29"E 94.02'
 - J-E S 38°48'19"W 86.41'

