

**LEGEND**

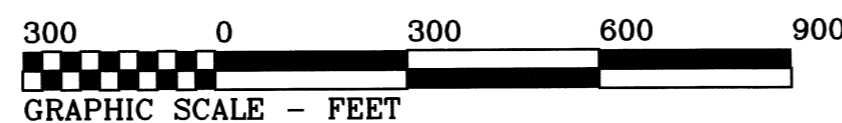
- .....Found Monument: 1988 BLM brass cap on pipe or as noted.
- .....Set Monument: 5/8" x 30" rebar with 2" aluminum cap stamped "NORTHSTAR SURVEYING" plus appropriate 1/16 corner info.
- ⊗.....Set Monument: 1/2" x 24" rebar with yellow plastic cap stamped "N.STAR"
- ⊕.....Set Monument: 1/2" x 24" rebar with orange plastic cap stamped "CONTROL POINT"
- .....50" Maple tree
- +.....Computed Position, nothing found or set.

Data of, or computed from, the following:  
( )..BLM Plat approved June 1, 1990  
[ ]..CS 9371 < >..CS 9566

CP = Control Point  
RM = Reference Monument

**RECORD OF SURVEY**  
FOR  
**EVERETT HANSEN**  
IN THE  
SW 1/4 OF SECTION 31  
T 14 S, R 8 W, W.M.  
BENTON COUNTY, OREGON

DECEMBER 4, 2015

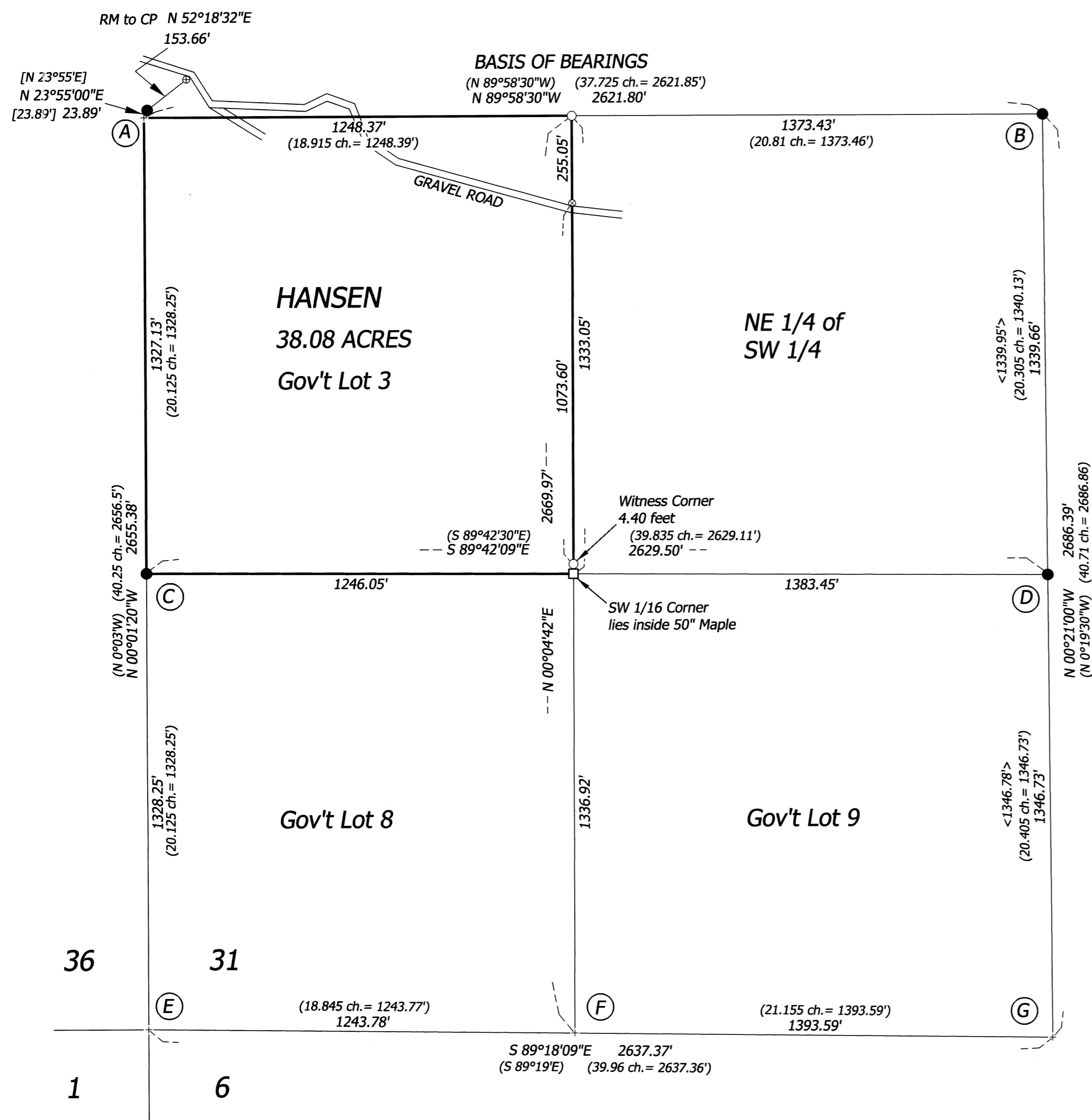


**CORNER DATA**

- (A) 1/4 CORNER SECTIONS 31 AND 36  
Computed position from found reference monument from CS 9371. RM is a 3-1/4" aluminum cap flush. Survey says corner position is in the water but it is not today. Client has a small steel post near corner position in brush. NE BT is rotten alder, client found tag and placed it on a small steel post next to rotten alder tree. I set rebar for control to tie this corner, as shown.
- (B) CENTER 1/4 CORNER SECTION 31  
Found 1988 BLM brass cap on steep south slope at the NW corner of 20 yr. old reprod. with steel post riser.  
48" D.Fir N 64°E 14 lks. with tag, paint and healed face.  
24" D.Fir S 54°30'W 18 lks. with tag, paint and healed face.
- (C) SOUTH 1/16 CORNER SECTIONS 31 AND 36  
Found 1978 BLM brass cap on west slope in Alder patch about 175' NE of timber corner and 75' east of drainage flowing north.
- (D) CENTER-SOUTH 1/16 CORNER SECTION 31  
Found 1988 BLM brass cap down 4" with "T" post 1 ft. north.  
36" double Cedar N 80°15'E 100 lks. with healed face and paint.  
20" Alder N 26°30'W 14 lks. with tag and paint.

**NARRATIVE**

The purpose of this survey was to set my client's SE and NE corners. My client's property is Government Lot 3 of Section 31. In 1990, the BLM approved a plat of this Section. The line notes show E-W lines running and marking line right past these 2 corners. I located the Center 1/4 (B), the South 1/16 (C) and the Center-South 1/16 (D) from this survey. They fit nicely. The West 1/4 corner of this Section was in the creek at the time of this survey. In 1999, CS 9371 set a reference monument NE of this corner. I tied into this RM and calculated the corner. This fit very nicely to the 1990 BLM survey, and I oriented to the E-W centerline of the Section. With these 4 monuments, I calculated the SW Section corner (E) by holding the record distance and extending the line (A) to (C). I calculated the South 1/4 corner (G) by holding the record distance and extending the line (B) to (D). The resulting distance from (E) to (G) was only off record by 0.01'. I decided that I could save my client a few bucks by not tying into the West 1/16 corner (F) and just calculate the position. The Center-West 1/16 was set by single proportion between (A) and (B). The Southwest 1/16 corner was set by bearing-bearing intersection as shown.



REGISTERED  
PROFESSIONAL  
LAND SURVEYOR

*Robert Alan Cook*

OREGON  
JULY 26, 1988  
ROBERT ALAN COOK  
2336

RENEWS: 12/31/2017

**NORTHSTAR SURVEYING, INC.**  
720 N.W. 4th Street  
Corvallis, Oregon 97330  
Phone: 541-757-9050