

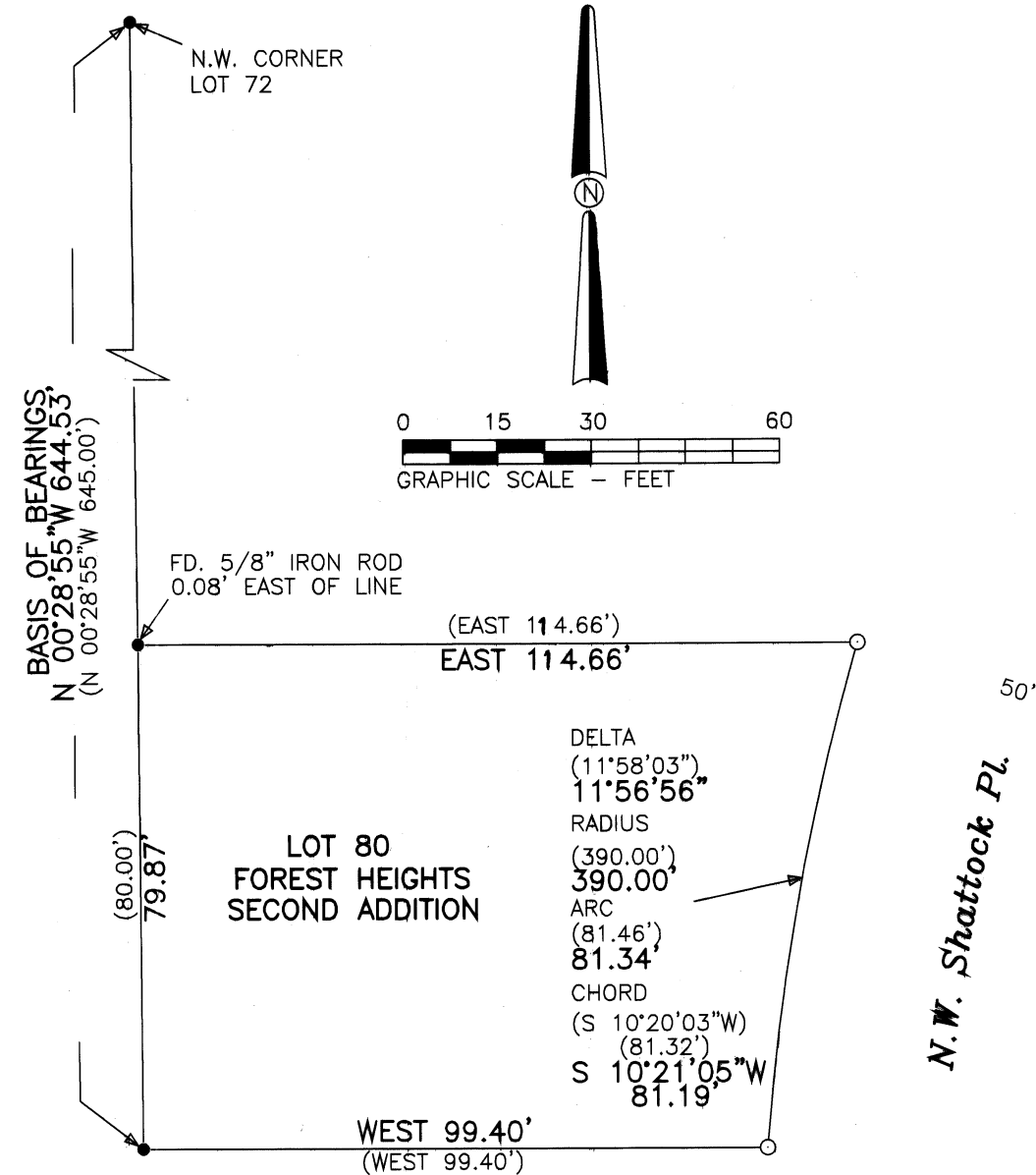
**Benton County
Surveyor's Office**

C.S. FILE NO. 10768

FILING DATE 6-16-16

FILE SIZE 8 1/2 x 14

Map of Survey
for
Susan Licht
JUNE 15, 2016
IN
FOREST HEIGHTS SECOND ADDITION
N.E. 1/4 OF SECTION 28
T.11 S. , R.5 W., W.M.,
CITY OF CORVALLIS,
BENTON COUNTY, OREGON



Legend

- 5/8" IRON ROD FOUND
- SET 5/8" X 30" STEEL REBAR WITH BLUE PLASTIC CAP STAMPED "DARRYL HARMS PLS 1079"
- () RECORD DATA FROM PLAT OF "FOREST HEIGHTS SECOND ADDITION"

Narrative

The purpose of this survey is to locate existing and replace missing corner monuments of Lot 80, Forest Heights Second Addition. I found the NW & SW corners and set the NE & SE corners holding the Basis of Bearings line, record bearing and distance of the North and South lines of Lot 80, holding the SW corner in position and the NW corner in its' found N-S position

REGISTERED
PROFESSIONAL
LAND SURVEYOR

Darryl W. Harms

OREGON
JULY 30, 1976
DARRYL W. HARMS
1079

RENEWAL DATE 6/30/17

DARRYL W. HARMS, P.L.S.
P.O. BOX 1051
CORVALLIS, OR 97339
PHONE: (541) 745-3948
E-MAIL
darrylharms@proaxis.com