

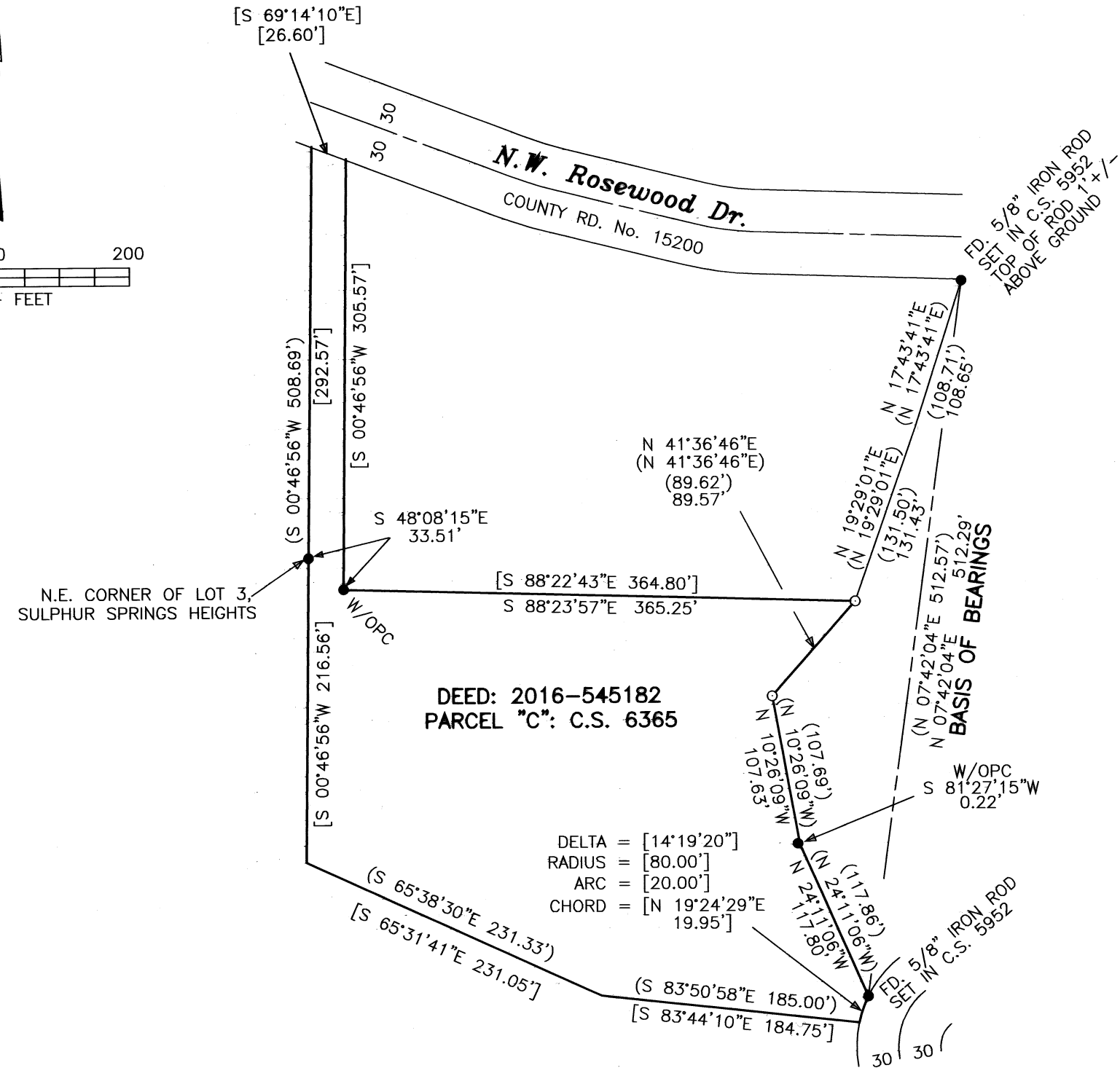
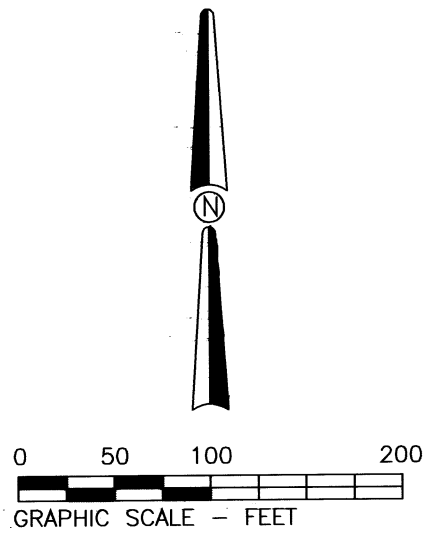
**Benton County
Surveyor's Office**

C.S. FILE NO 10774

FILING DATE 8-5-16

FILE SIZE 11x17

MAP OF SURVEY
FOR
PATRICIA DROP
JULY 19, 2016
IN THE N.E. 1/4 OF SECTION 10,
T.11 S., R.5 W., W.M.,
BENTON COUNTY, OREGON



Legend

- 5/8" IRON ROD FOUND, SOURCE NOTED
- SET 5/8" X 30" STEEL REBAR WITH BLUE PLASTIC CAP STAMPED "DARRYL HARMS, PLS 1079"
- () RECORD DATA FROM C.S. 5952
- [] RECORD DATA FROM C.S. 9630

Narrative

The purpose of this survey is to monument the East line of the tract of land described in Deed No. 2016-454182, and shown on C.S. 5952, C.S. 6365 and C.S. 9630. The monuments I set in C.S. 9630 marking the second angle point in the East line and the Northeast corner of the subject tract were moved by a landslide a few years ago and I replaced them holding the Basis of Bearings line and proportioning the original line lengths.

REGISTERED
PROFESSIONAL
LAND SURVEYOR

Darryl W. Harms

OREGON
JULY 30, 1976
DARRYL W. HARMS
1079

RENEWAL DATE 6/30/17

DARRYL W. HARMS, P.L.S.
P.O. BOX 1051
CORVALLIS, OR 97339
PHONE: (541) 745-3948
E-MAIL
darrylharms@proaxis.com

DELTA = [14°19'20"]
RADIUS = [80.00']
ARC = [20.00']
CHORD = [N 19°24'29"E 19.95']