

C.S. # 1082

Hardcopy 12-5 # 23

also see notes in file

F. B. 38-8

8 FB#38  
C.S. 38 Continued  
Abiather Newton Cl. 42

1082

T. 12-5

Beginning at 1" shaft 16.520 S.89°58'E  
of NW cor  
of Cl. 42.

1 S.89°29'E. 11.339

2 5.619

- .478

Set 3/4" Shaft  
Thence South

-4°15' 8.000

-2°30' 8.000

2.271

3 Set 1/2" bolt & at .303 set 1/2" pipe

Thence N. 80°33' W. .128

Fac in Stone  $\triangle$  already set. Fence 5' W. running South

N. 86°04' W. +2°15' 5.150 = 5.146

5 Stone 10" X 14" X ? set at L of Road & fence South

S. 53°45' W. 12.223

6 Stone

S. 78°43' W. +1°15' 7.018

-4°55' 4.220

8 To a 3/4" pipe on the W. line of Cl. 42

A 3/4" pipe S 0°50' W. .37

" 1/4" " N. 0°50' E. .37

From 4885 N 88°45' E. of  $\triangle$  set 1" shaft & 3/4" pipes

North +1°45' 8.000

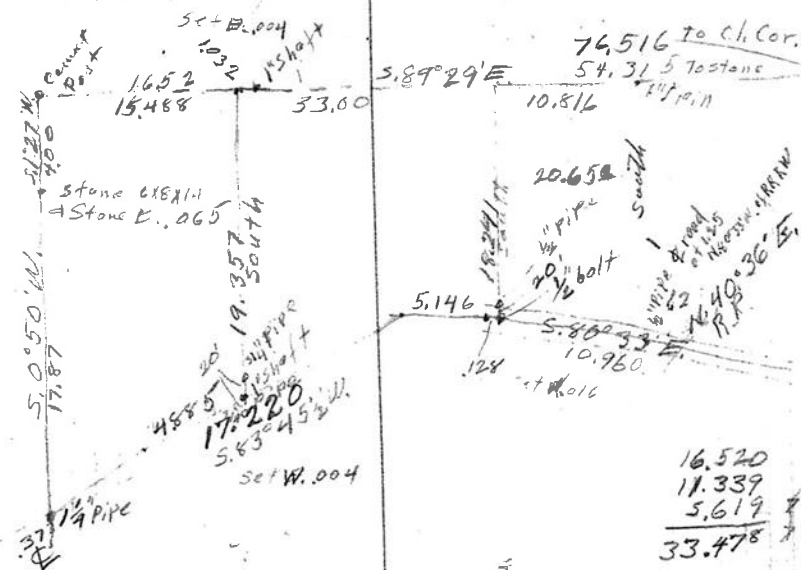
+1°55' 8.000

+2° 3.320

+0.56

lined thru  
to Cl. Cor.

For Ernest Weatt Nov. 5, 1928



10.816  
6.572  
7.244  
7.244  
8.000 - 4°20'  
8.000 - 2°30'  
3.983  
- .008  
19.952  
- .008  
19.944

17.220  
4.853  
12.335

16.520  
11.339  
5.619  
33.478

7.978  
7.992  
2.271  
18.241

7.016  
4.204  
11.220

7.996  
7.995  
3.318  
.056  
19.365

74.516 to Cl. Cor.  
54.315 to stone  
10.816  
33.00  
5.89°29'E  
10.816

5.146  
128  
10.960  
5.80°33'E  
19.944

7.977  
7.992  
3.983  
19.952  
- .008  
19.944