

# RECORD OF SURVEY

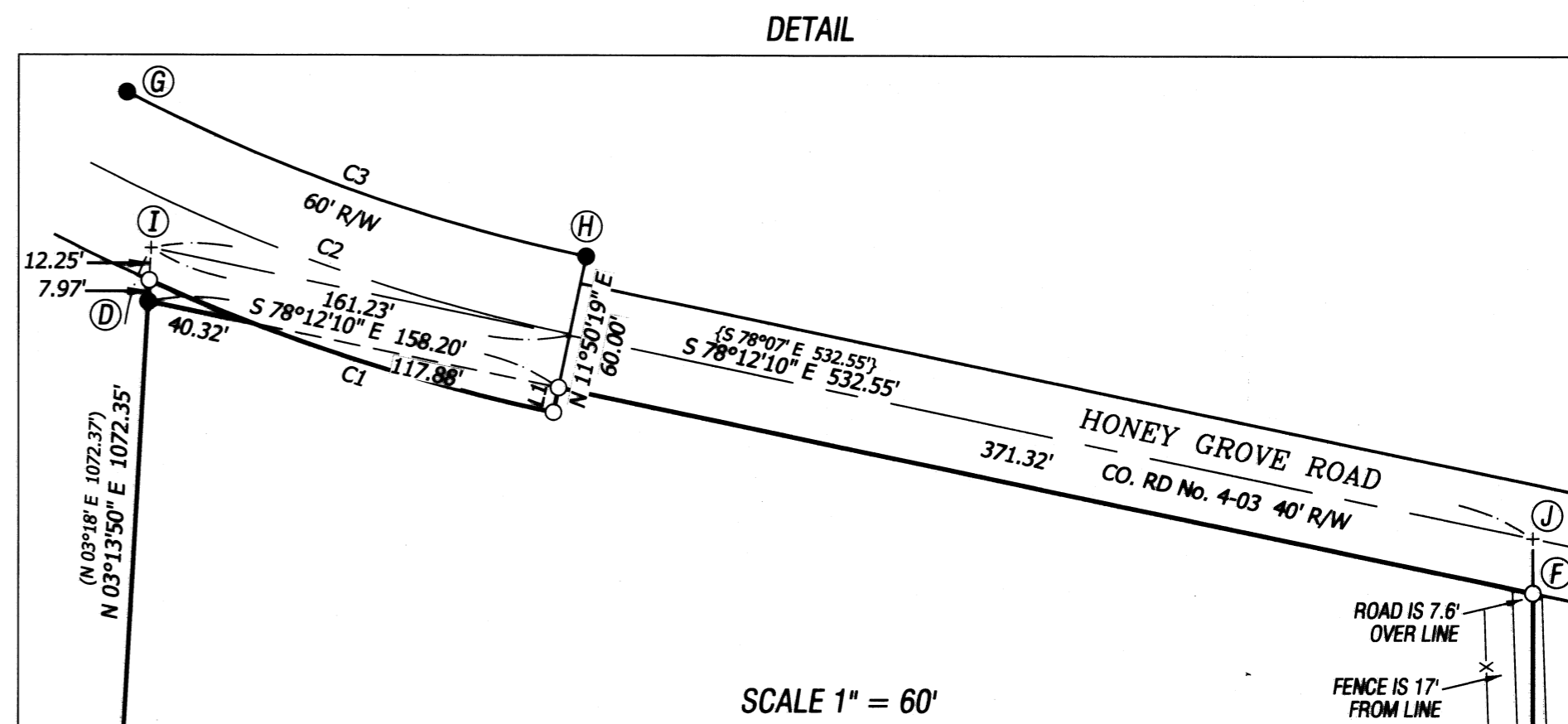
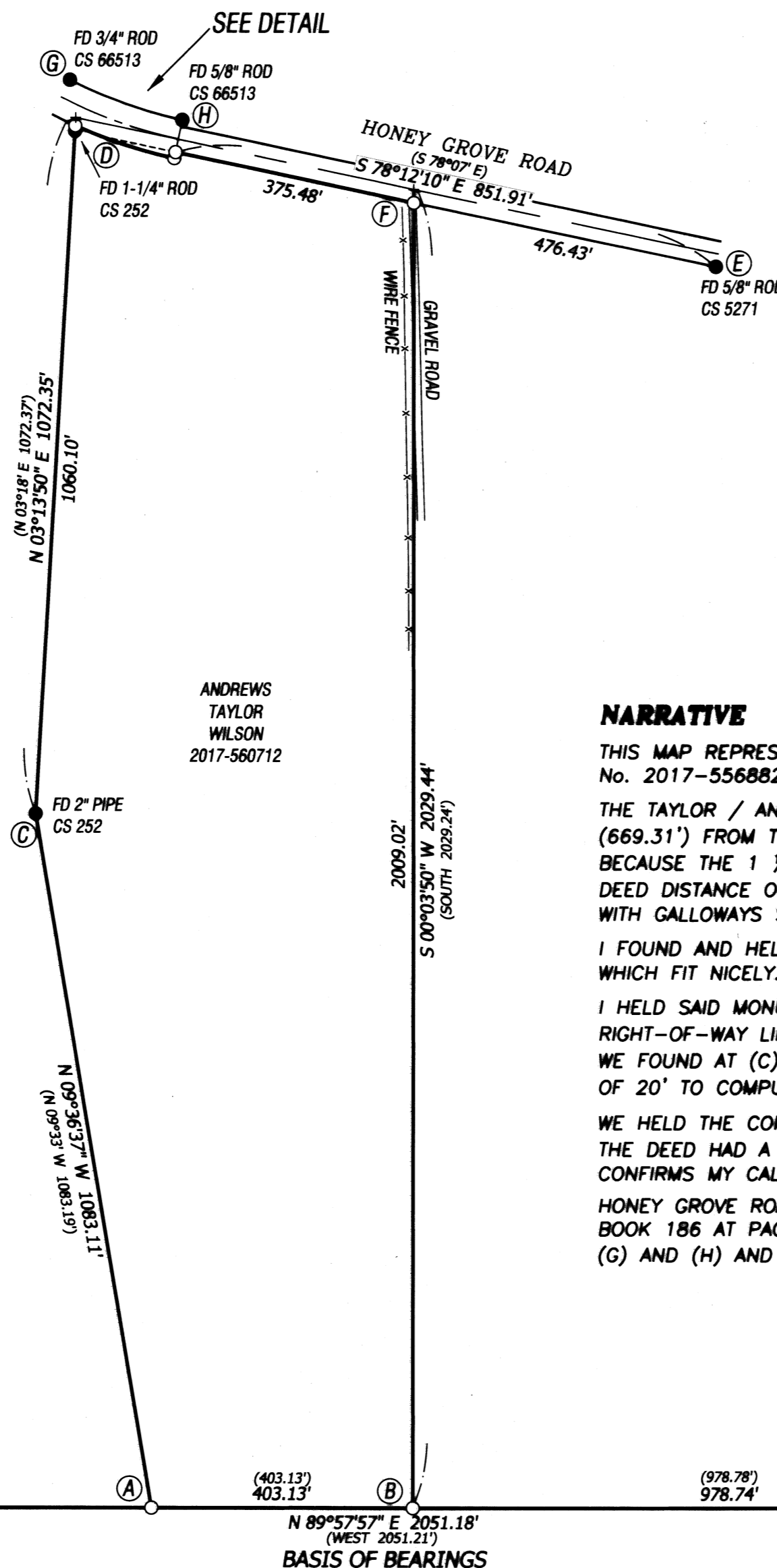
for  
**RICHARD TAYLOR**

in the  
 NORTHWEST QUARTER OF SECTION 6,  
 TOWNSHIP 14 SOUTH, RANGE 7 WEST,  
 WILLAMETTE MERIDIAN,  
 BENTON COUNTY, OREGON

AUGUST 24, 2017

## LEGEND

- .....MONUMENT FOUND AS NOTED
- .....SET 5/8" X 30" REBAR WITH RED PLASTIC CAP STAMPED "NORTHSTAR SURVEYING"
- + .....COMPUTED POINT, NOTHING FOUND OR SET
- ( ).....RECORD DATA FROM CS 252 & DEED 2017-556882
- { }.....RECORD DATA FROM CS 6513



## NARRATIVE

THIS MAP REPRESENTS A BOUNDARY SURVEY OF THAT TRACT CONVEYED TO RICHARD TAYLOR AND MARK AND LINDA ANDREWS PER INSTRUMENT No. 2017-556882, BENTON COUNTY DEED RECORDS.

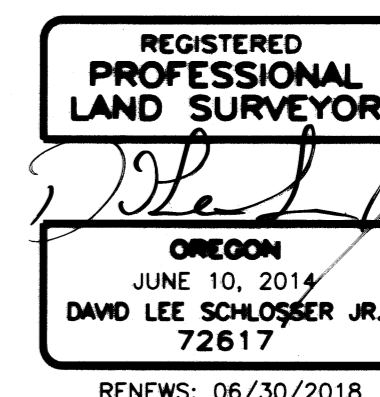
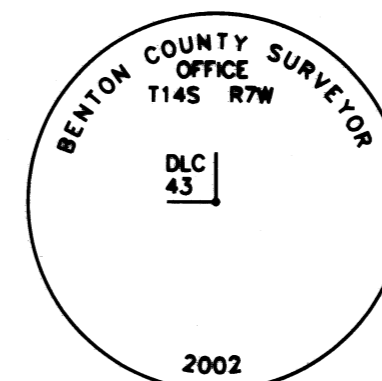
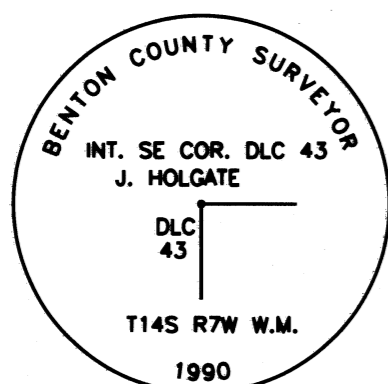
THE TAYLOR / ANDREWS TRACT BEGINS AT A 1 1/2" IRON ROD LOCATED ALONG JACOB HOLGATE D.L.C. No. 43 LINE, LYING 10.141 CHAINS (669.31') FROM THE INTERIOR CORNER OF SAID D.L.C. WE HELD THIS LINE AND THE DEED DISTANCE TO ESTABLISH THIS CORNER AT (A) BECAUSE THE 1 1/2" IRON ROD WAS NOT FOUND. WE SET THE SOUTHEAST CORNER OF THIS TRACT AT (B) ALONG THE SAME D.L.C. LINE AT THE DEED DISTANCE OF 6.108 CHAINS (403.13') FROM THE COMPUTED POINT AT (A), WE FOUND THE DIMENSIONS ALONG THE D.L.C. LINE FIT NICELY WITH GALLOWAYS SURVEY CS252.

I FOUND AND HELD THE MONUMENT AT (C) 2" PIPE AND THE MONUMENT AT (D) 1/2" IRON ROD PER CS252 AND DEED FOR THE WEST LINE WHICH FIT NICELY.

I HELD SAID MONUMENT AT (D) ALONG WITH THE MONUMENT AT (E) 5/8" IRON ROD PER CS 5271 TO DETERMINE THE ORIGINAL SOUTH RIGHT-OF-WAY LINE OF HONEYGROVE ROAD. CS252 AND THE DEED CALLS OUT A DISTANCE OF 16.248 CHAINS (1072.37') FROM THE 2" PIPE WE FOUND AT (C) TO THE CENTERLINE OF THE COUNTY ROAD. WE HELD THE LINE BETWEEN (C) AND (D) AND THE OFFSET OF THE EAST LINE OF 20' TO COMPUTE THE LOCATION OF (I). WE THEN HELD THE DEED DISTANCE OF 8.069 CHAINS (532.55') TO COMPUTE THE POSITION AT (J).

WE HELD THE COMPUTED POINT AT (J) WITH THE COMPUTED POINT AT (B) AND SET THE POINT AT (F) ON THE RIGHT-OF-WAY LINE. CS252 AND THE DEED HAD A CALL ALONG THE EAST LINE OF 30.746 CHAINS (2029.24'), WE CALCULATED A DISTANCE OF 2029.44' THIS FITS NICELY AND CONFIRMS MY CALCULATIONS.

HONEY GROVE ROAD WAS WIDENED AND DEDICATED TO BENTON COUNTY IN 1963 PER BOOK 185 AT PAGE 552, BOOK 185 AT PAGE 256, AND BOOK 186 AT PAGE 294. THIS RIGHT-OF-WAY WAS SURVEYED BY RICHARD FAIL IN 1977 PER CS6513. I FOUND AND HELD THE MONUMENTS AT (G) AND (H) AND HELD 60 FOOT OFFSET TO DETERMINE THE NEW RIGHT-OF-WAY POSITIONS PER CS 6513 AS SHOWN HEREON.

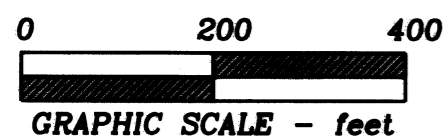


## LINE TABLE

LINE	BEARING	DISTANCE
L1	N 11°50'19" E	9.46'
	(S 11°46'00" W)	(10.00')

## CURVE TABLE

CURVE	RADIUS	ARC LENGTH	CHORD LENGTH	CHORD BEARING	DELTA ANGLE
C1	746.20'	160.64'	160.33'	S 71°59'39" E	12°20'03"
	{746.20'}	{201.98'}	{201.36'}	{S 70°28'45" E}	{15°30'30"}
C2	716.20'	192.42'	191.84'	S 70°27'53" E	15°23'35"
	{716.20'}	{193.85'}	{193.26'}	{S 70°28'45" E}	{15°30'30"}
C3	686.20'	184.36'	183.80'	S 70°27'53" E	15°23'35"
	{686.20'}	{185.73'}	{185.17'}	{S 70°28'45" E}	{15°30'30"}



**NORTHSTAR SURVEYING, INC.**  
 720 N.W. 4th Street  
 Corvallis, Oregon 97330  
 Phone: 541-757-9050