

C.S. 10885
PROPERTY LINE ADJUSTMENT
FOR

C.S. FILE NO. 10885
FILING DATE 3-23-18
FILE SIZE 18x24

LINDA TORREY-HUEBNER
LOCATED IN
JOHN QUINN THORNTON D.L.C. No. 37
NE 1/4 SEC. 1, T. 11 S., R. 4 W., W.M.
IN THE
CITY OF ALBANY, BENTON COUNTY, OREGON
JANUARY 3, 2018
CITY OF ALBANY CASE No. LA-05-17

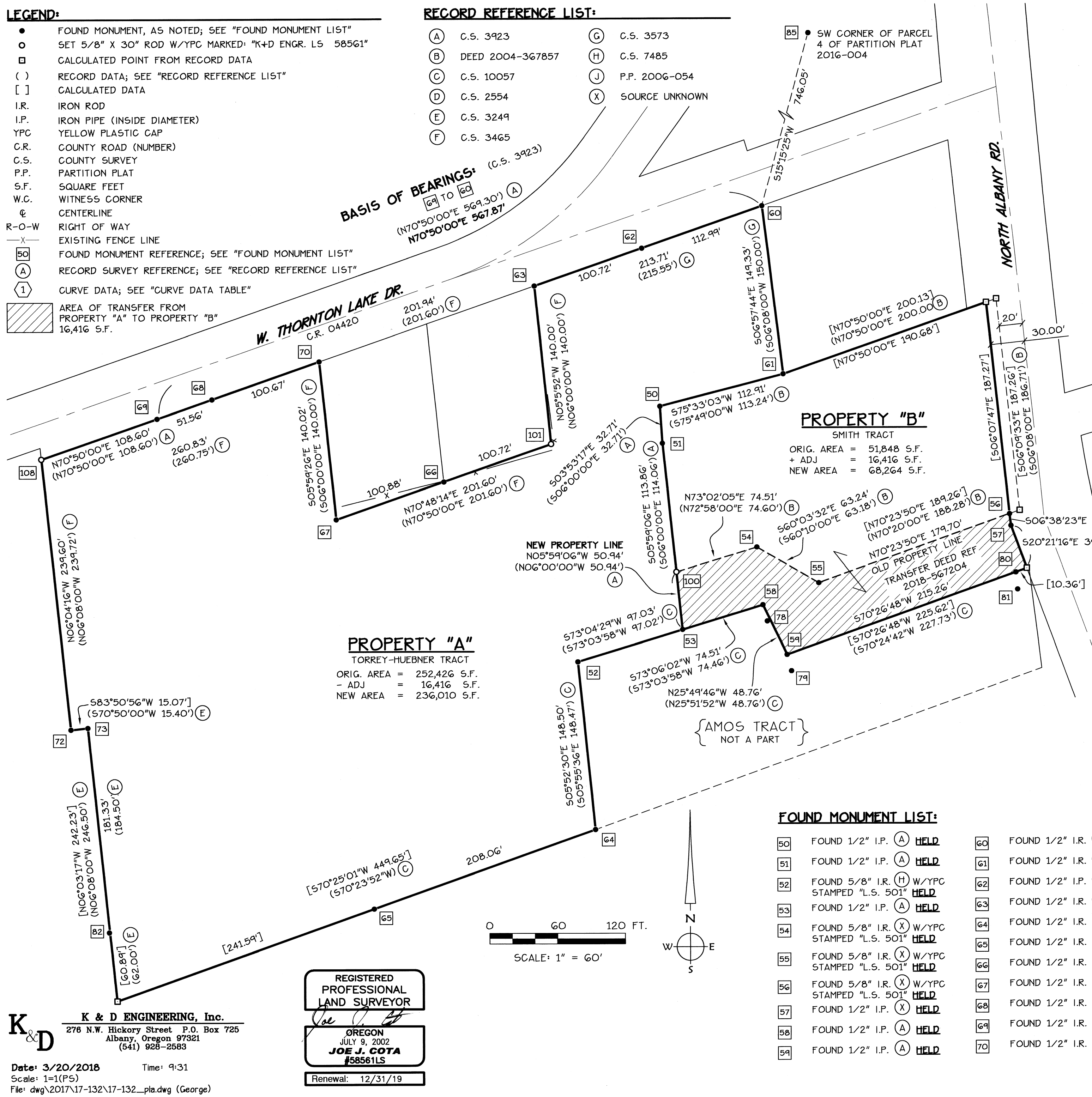
NARRATIVE:
PURPOSE:
THE PURPOSE OF THIS SURVEY IS TO COMPLETE A PROPERTY LINE ADJUSTMENT AND MONUMENT THE RECONFIGURED TORREY-HUEBNER TRACT AS APPROVED BY ALBANY PLANNING DEPARTMENT CASE FILE LA-05-17

BOUNDARY DETERMINATION:
FOUND MONUMENTS, SET MONUMENTS AND CALCULATED POINTS WERE HELD AS SHOWN ON THE MAP AND FURTHER DESCRIBED BELOW:
POINT 100 WAS SET ON THE LINE ESTABLISHED BY POINTS 53 AND 51 AT THE RECORD DISTANCE FROM 50 PER C.S. 3923
POINT 101 WAS SEAT AT A DISTANCE-DISTANCE INTERSECTION FROM POINTS 63 AND 67 PER C.S. 3465
POINT 108 WAS SET ALONG THE PROJECTION OF THE LINE ESTABLISHED BY POINTS 60 AND 69 AT RECORD DISTANCE FROM POINT 69 PER C.S. 3923

APPROVALS:
Robert Richardson
COMMUNITY DEVELOPMENT DIRECTOR,
CITY OF ALBANY
3-20-2018
DATE

- LEGEND:**
- FOUND MONUMENT, AS NOTED; SEE "FOUND MONUMENT LIST"
 - SET 5/8" X 30" ROD W/YPC MARKED: "K+D ENGR. LS 58561"
 - CALCULATED POINT FROM RECORD DATA
 - () RECORD DATA; SEE "RECORD REFERENCE LIST"
 - [] CALCULATED DATA
 - I.R. IRON ROD
 - I.P. IRON PIPE (INSIDE DIAMETER)
 - YPC YELLOW PLASTIC CAP
 - C.R. COUNTY ROAD (NUMBER)
 - C.S. COUNTY SURVEY
 - P.P. PARTITION PLAT
 - S.F. SQUARE FEET
 - W.C. WITNESS CORNER
 - ⊕ CENTERLINE
 - R-O-W RIGHT OF WAY
 - X- EXISTING FENCE LINE
 - 50 FOUND MONUMENT REFERENCE; SEE "FOUND MONUMENT LIST"
 - A RECORD SURVEY REFERENCE; SEE "RECORD REFERENCE LIST"
 - 1 CURVE DATA; SEE "CURVE DATA TABLE"
 - ▨ AREA OF TRANSFER FROM PROPERTY "A" TO PROPERTY "B" 16,416 S.F.

- RECORD REFERENCE LIST:**
- | | |
|----------------------|--------------------|
| (A) C.S. 3923 | (G) C.S. 3573 |
| (B) DEED 2004-367857 | (H) C.S. 7485 |
| (C) C.S. 10057 | (J) P.P. 2006-054 |
| (D) C.S. 2554 | (X) SOURCE UNKNOWN |
| (E) C.S. 3249 | |
| (F) C.S. 3465 | |



K & D ENGINEERING, Inc.
276 N.W. Hickory Street P.O. Box 725
Albany, Oregon 97321
(541) 928-2583

Date: 3/20/2018 Time: 9:31
Scale: 1"=1(P5)
File: dwg\2017\17-132\17-132_pla.dwg (George)

REGISTERED
PROFESSIONAL
LAND SURVEYOR
Joe J. Cota
OREGON
JULY 9, 2002
JOE J. COTA
#58561LS
Renewal: 12/31/19