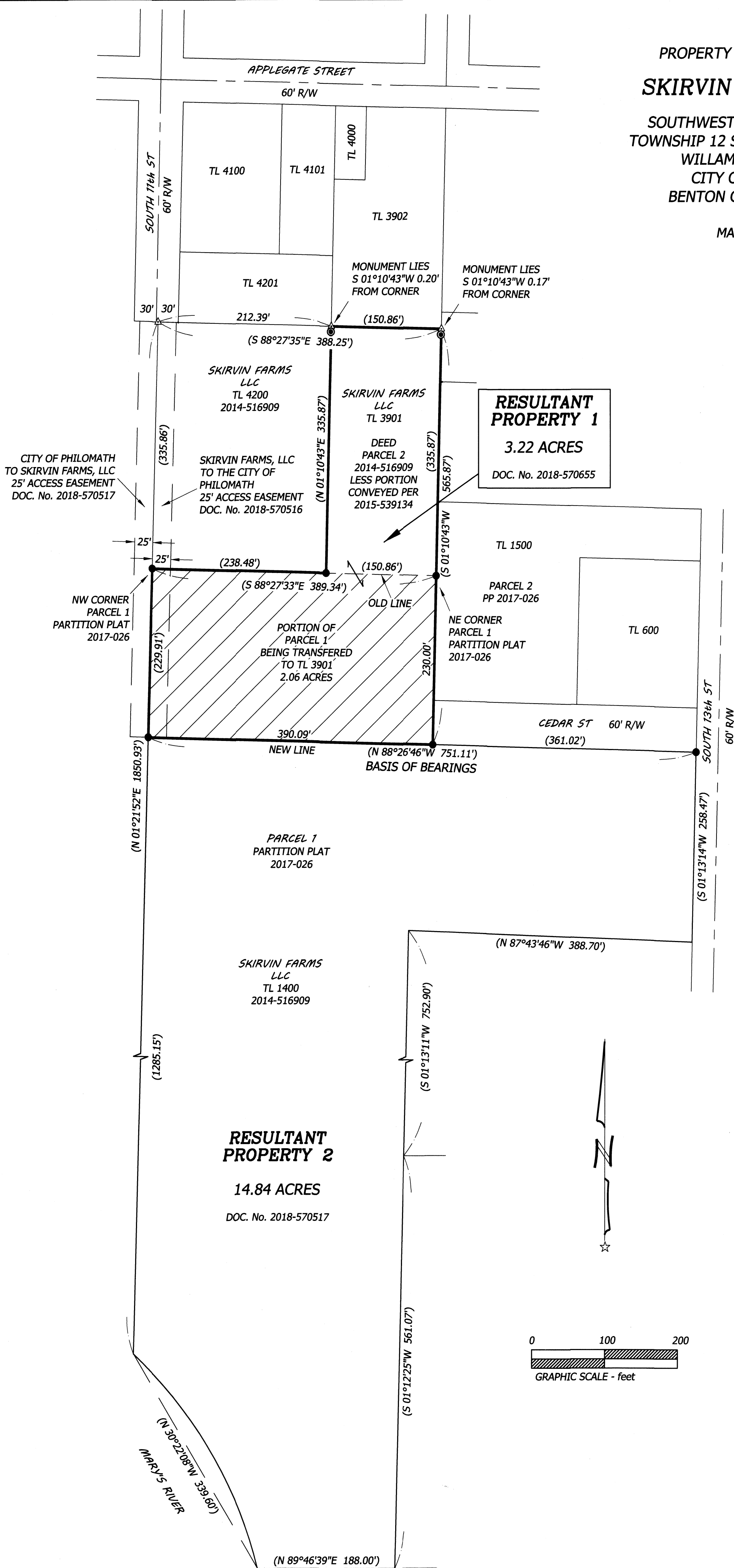


PROPERTY LINE ADJUSTMENT
FOR
SKIRVIN FARMS, LLC
IN THE
SOUTHWEST 1/4 OF SECTION 12,
TOWNSHIP 12 SOUTH, RANGE 6 WEST,
WILLAMETTE MERIDIAN
CITY OF PHILOMATH
BENTON COUNTY, OREGON

MARCH 9, 2018



LEGEND

-FOUND MONUMENT WITH RED PLASTIC CAP STAMPED
"NORTHSTAR SURVEYING" PER PARTITION PLAT 2017-026
- ⊙FOUND MONUMENT WITH RED PLASTIC CAP STAMPED
"NORTHSTAR 1823" PER CS 8684
- △COMPUTED POINT PER PARTITION PLAT 2017-026
- ()....MEASURED = RECORD PER PARTITION PLAT 2017-026
- PP.....PARTITION PLAT
- R/W....RIGHT-OF-WAY
- TL.....TAX LOT

NARRATIVE

The purpose of this survey is to officially document a property line adjustment that was monumented as part of Partition Plat 2017-026. The controlling monuments were all of those shown hereon per said Partition Plat. I completed Partition Plat 2017-026 in December, 2017. The monuments at each end of the "NEW LINE" were set on said partition. I also noted here that I had incorrectly drawn the Tax Lot lines for Tax Lots 4100, 4101, 4201, and 3902 on the partition plat; they are correct on this map. Also the City of Philomath and Skirvin Farms, LLC are each granting 25' easements for an extension of South 11th Street as shown.

FILE No. P18-02
PROPERTY LINE ADJUSTMENT APPROVED

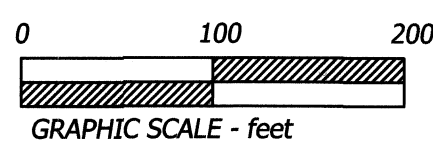
[Signature] 6/5/18
Philomath Planning Official date

REGISTERED
PROFESSIONAL
LAND SURVEYOR

[Signature]

OREGON
JULY 13, 1979
THEODORE JAMES LANGTON
1823

RENEWS: 12/31/2018



Northstar
SURVEYING

720 NW 4TH STREET CORVALLIS, OR 97330
(541) 757-9050 FAX (541) 757-7578
www.northstarsurveying.com