

**PROPERTY LINE ADJUSTMENT
SURVEY**

for
PETER C. HUDSON
and
CAROLYN HUDSON-WILKINS

PER 2018-566667

in the
SOUTHEAST 1/4 OF SECTION 24,
TOWNSHIP 11 SOUTH,
RANGE 5 WEST,
WILLAMETTE MERIDIAN,
CITY OF CORVALLIS,
BENTON COUNTY, OREGON

JUNE 11, 2018

PLA-2018-02

REGISTERED
PROFESSIONAL
LAND SURVEYOR
Theodore James Langton
OREGON
JULY 13, 1979
THEODORE JAMES LANGTON
1823
RENEWS: 12/31/2018

Northstar
SURVEYING
720 NW 4TH STREET CORVALLIS, OR 97330
(541) 757-9050 FAX (541) 757-7578
www.northstarsurveying.com

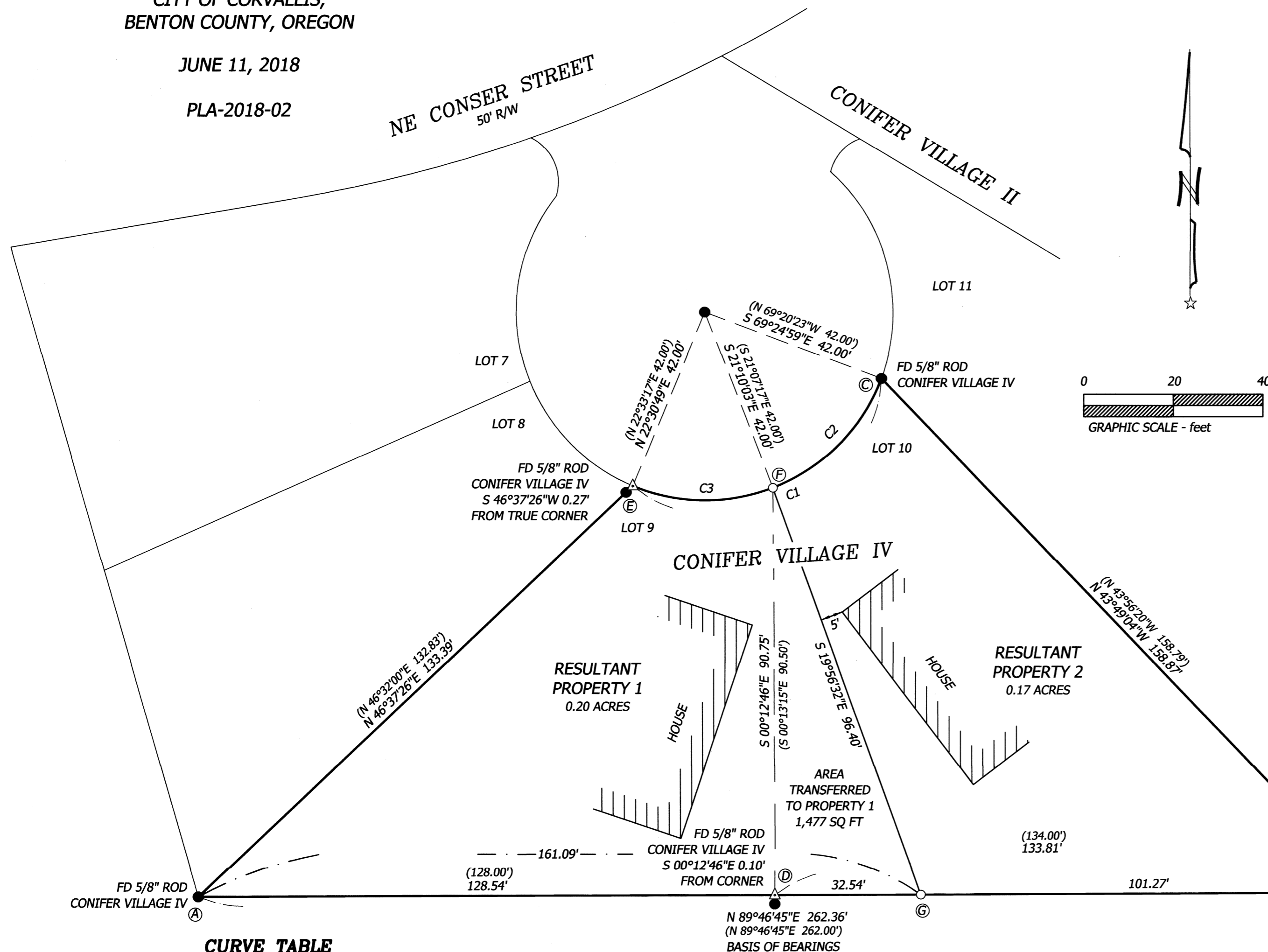
NARRATIVE

Per Community Development Planning Division Case No. PLA-2018-02, the purpose of this survey is to adjust the common line between Lots 9 & 10, Conifer Village IV, so that a minimum setback of 5 feet is maintained to the closest corner of the house on said Lot 10 as shown.

I found and held the monument at the center of the cul-de-sac to determine the right-of-way, which is also the north line of said Lots 9 & 10. I held the found monuments at (A), (B) and (C) to establish the south and east lines respectively. The monument at (D) was off the south line as shown. I held monuments (A) and (E) to define the west line of Lot 9, and then projected the line to the intersection with the cul-de-sac right-of-way line. The monument at the NE corner of Lot 9 and the NW corner of Lot 10 was gone, so I computed position (F) by proportion of arc lengths between (C) and the computed NW corner of Lot 9. The new common lot line was then calculated by holding monument (F), and a point 5.00 feet from the house on Lot 10, as shown. Position (G) was calculated on a projection and intersection of said new line with the south line of Lot 10.

LEGEND

-FOUND MONUMENT AS NOTED
-SET MONUMENT- 5/8" X 30" REBAR WITH RED PLASTIC CAP STAMPED "NORTHSTAR SURVEYING"
- △COMPUTED POINT (NOTHING SET OR FOUND)
- ()RECORD DATA OF, OR COMPUTED FROM, CONIFER VILLAGE IV
- R/WRIGHT-OF-WAY
- FDFOUND



CURVE TABLE

CURVE	ARC LENGTH	RADIUS	DELTA ANGLE	CHORD BEARING	CHORD LENGTH
C1	67.39'	42.00'	91°55'49"	N 66°32'55" E	60.39'
C2	35.37'	42.00'	48°14'56"	S 44°42'29" W	34.33'
	(35.35')	(42.00')	(48°13'21")	(S 44°46'18" W)	(34.31')
C3	32.02'	42.00'	43°40'52"	S 89°19'37" E	31.25'
	(32.01')	(42.00')	(43°40'27")	(S 89°16'48" E)	(31.25')

PROPERTY LINE ADJUSTMENT PLA 2018-02
APPROVED

[Signature] 7-10-2018
City of Corvallis Planning Division Manager Date
[Signature] 07-06-18
City of Corvallis Engineer Date