

NARRATIVE:

PURPOSE:

THE PURPOSE OF THIS SURVEY IS TO COMPLETE AN APPROVED PROPERTY LINE ADJUSTMENT PER CITY OF ALBANY CASE FILE LA-07-17

BOUNDARY DETERMINATION:

THE FOUND MONUMENTS AT POINTS [50] AND [54] WERE HELD TO ESTABLISH THE SOUTHERLY LINE OF PROPERTY "B", AS SHOWN ON THE MAP. THE REMAINING BOUNDARY LINES OF PROPERTIES "A" AND "B" WERE CALCULATED PER RECORD DATA, AS SHOWN ON THE MAP. MONUMENTS WERE SET TO DEFINE THE ADJUSTED COMMON BOUNDARY BETWEEN PROPERTY "A" AND "B", AS SHOWN ON THE MAP.

C.S. 10946

PROPERTY LINE ADJUSTMENT

FOR

CARLA DIAN G. GERSTNER

LOCATED IN

NE 1/4 SEC. 2, T. 11 S., R. 4 W., W.M. AND THE
SE 1/4 SEC. 35, T. 10 S., R. 4 W., W.M.

IN THE

CITY OF ALBANY, BENTON COUNTY, OREGON

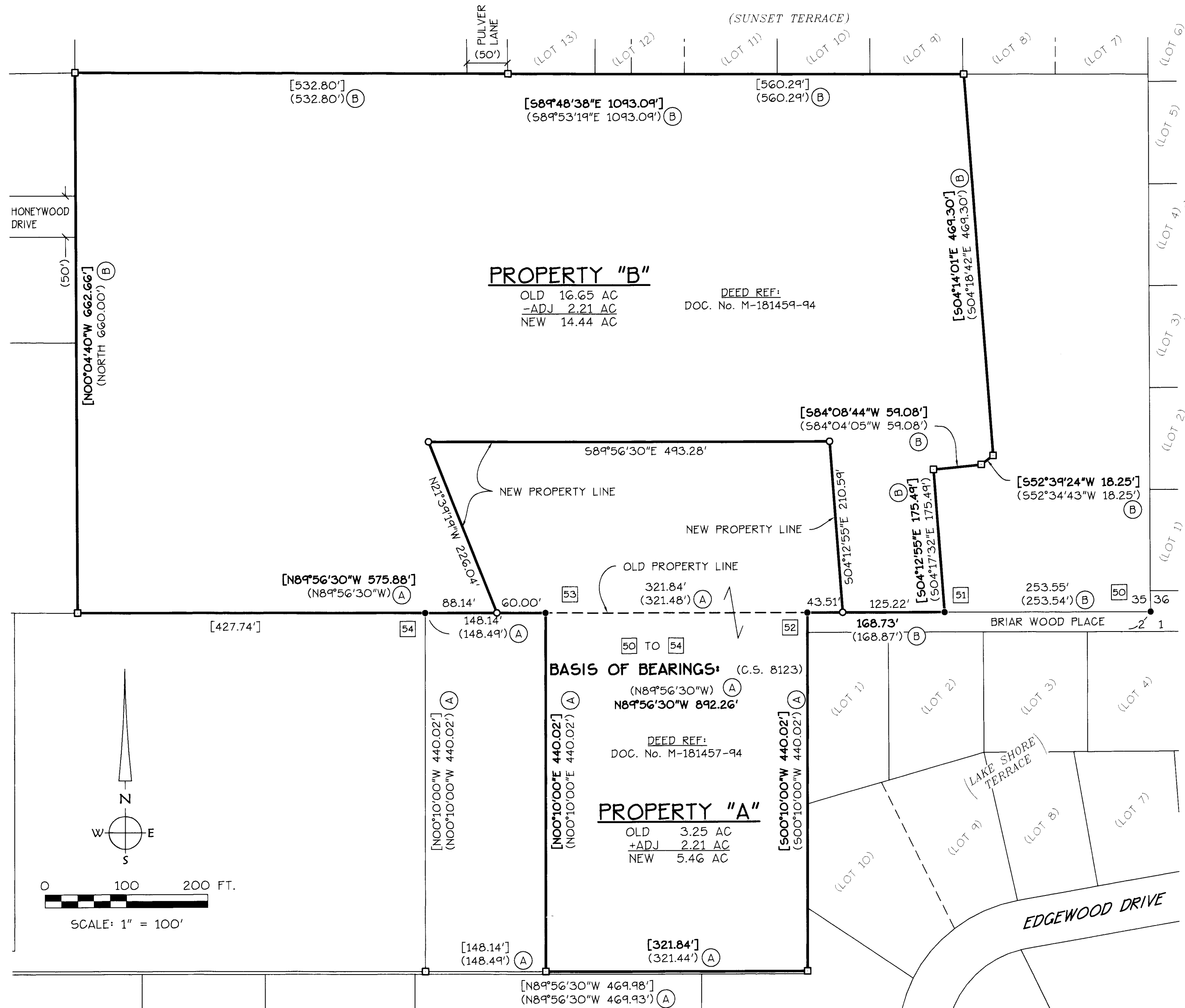
DECEMBER 3, 2018

CITY OF ALBANY CASE No. LA-07-17

APPROVALS: LA-07-17

[Signature]
COMMUNITY DEVELOPMENT DIRECTOR,
CITY OF ALBANY

2/28/2019
DATE



LEGEND:

- FOUND MONUMENT, AS NOTED; SEE "FOUND MONUMENT LIST"
- SET 5/8" X 30" ROD W/YPC MARKED: "K+D ENGR. L.S. 58561"
- CALCULATED POINT FROM RECORD DATA
- [] CALCULATED DATA, BASED ON RECORD INFORMATION
- () RECORD DATA; SEE "RECORD REFERENCE LIST"
- AC ACRES
- I.R. IRON ROD
- I.P. IRON PIPE (INSIDE DIAMETER)
- YPC YELLOW PLASTIC CAP
- RPC RED PLASTIC CAP
- C.S. COUNTY SURVEY
- P.P. PARTITION FLAT
- S.F. SQUARE FEET
- [50] FOUND MONUMENT REFERENCE; SEE "FOUND MONUMENT LIST"
- (A) RECORD SURVEY REFERENCE; SEE "RECORD REFERENCE LIST"

FOUND MONUMENT LIST:

- [50] FOUND 2" I.P. AT SOUTHEAST CORNER OF SECTION 35; HELD FOR BEARING
- [51] FOUND 5/8" I.R. (B); W/RPC STAMPED "K+D ENGR. L.S. 1630; ON-LINE
- [52] FOUND 5/8" I.R. (C); ON-LINE
- [53] FOUND 5/8" I.R. (D); ON-LINE
- [54] FOUND 5/8" I.R. (A); W/YPC STAMPED "K+D ENGR. L.S. 1238; HELD

RECORD REFERENCE LIST:

- (A) C.S. 8123
- (B) C.S. 8335
- (C) C.S. 3737
- (D) C.S. 5418

REGISTERED
PROFESSIONAL
LAND SURVEYOR
[Signature]
OREGON
JULY 9, 2002
JOE J. COTA
#58561LS
Renewal: 12/31/19

K & D

K & D ENGINEERING, Inc.
276 N.W. Hickory Street P.O. Box 725
Albany, Oregon 97321
(541) 928-2583