

PROPERTY LINE ADJUSTMENT SURVEY

for
ALAN TAYLOR
 in the
NORTHWEST 1/4 OF SECTION 3,
 and
NORTHEAST 1/4 OF SECTION 4,
TOWNSHIP 13 SOUTH, RANGE 6 WEST,
WILLAMETTE MERIDIAN,
BENTON COUNTY, OREGON

JULY 3, 2018
 AMENDED JULY 18, 2019

FILE No. LU-18-012

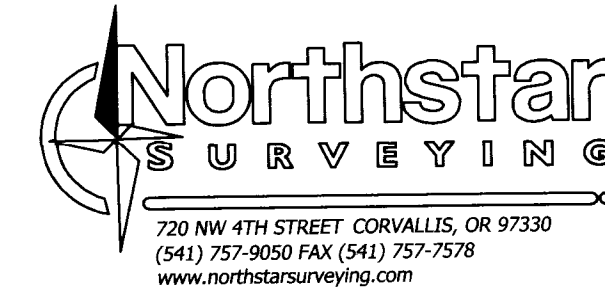
LEGEND

- FOUND MONUMENT AS NOTED
 - △ COMPUTED POINT, NOTHING FOUND OR SET
 - SET 5/8" X 30" REBAR WITH RED PLASTIC CAP
 STAMPED "NORTHSTAR SURVEYING"
- RECORD DATA FROM THE FOLLOWING:
- a CS 4227; b COMPUTED ANGLE & DISTANCE;
 - c M-101073-88; d CS 4380;
 - e CS 4786; f M-15991; g CS 10920;
- BCCR BENTON COUNTY CORNER RESTORATION
 DLC DONATION LAND CLAIM
 FD FOUND
 GHC GALLOWAY HARD COPY
 LU LAND USE

REGISTERED
**PROFESSIONAL
 LAND SURVEYOR**

Theodore J. Langton
 OREGON
 JULY 13, 1979
 THEODORE JAMES LANGTON
 1823

RENEWS: 12/31/2018



BENTON COUNTY
 SURVEYOR'S OFFICE

C.S. FILE NO. 10965
 FILING DATE 7-18-19
 FILE SIZE 18x24

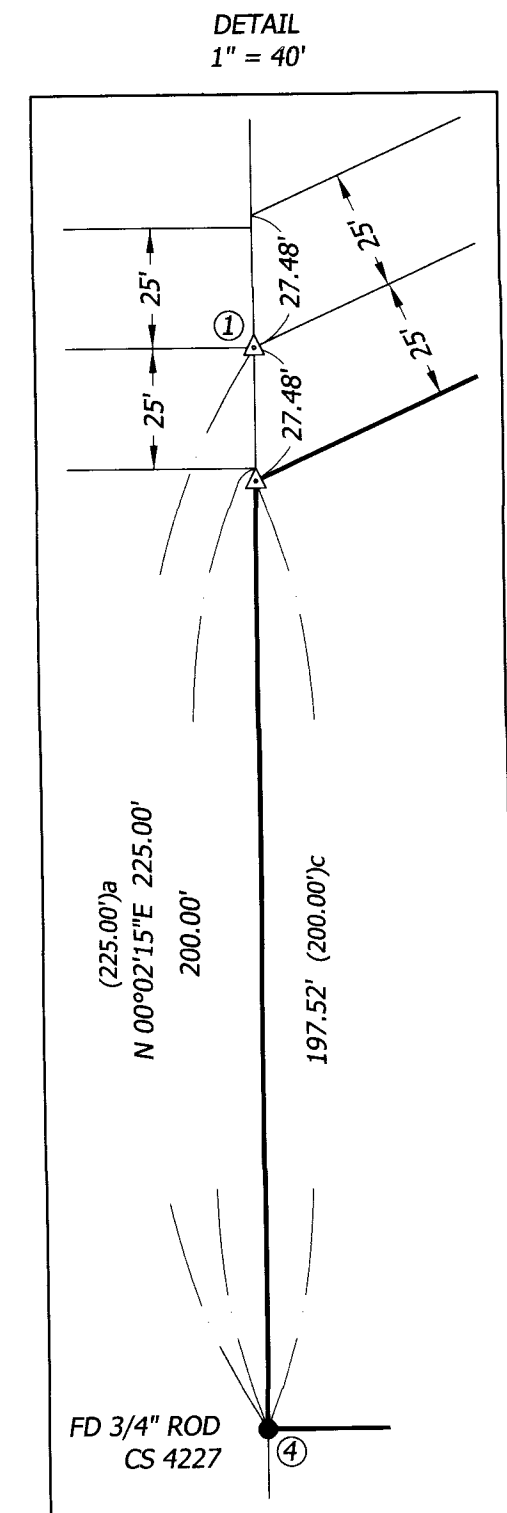
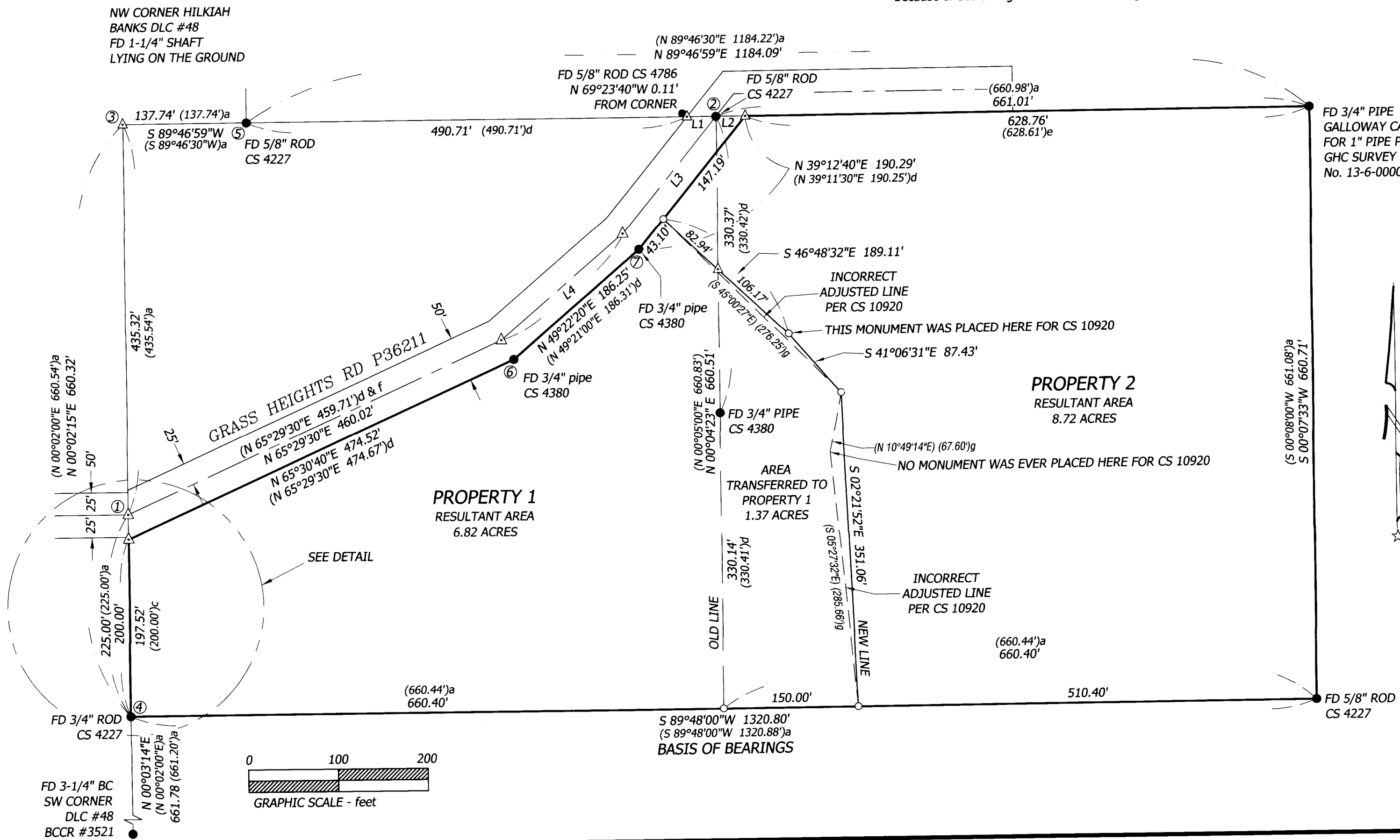
LU-18-012 PROPERTY LINE ADJUSTMENT APPROVED

Greg Vennet 7/18/2019
 BENTON COUNTY PLANNING OFFICIAL DATE

NARRATIVE

The purpose of this survey is to adjust the common line between Tax Lots 1800 and 2100. Tax Lot 1800 was conveyed to Alan and Jeanne Taylor per M-101073-88, and Tax Lot 2100 was also conveyed to the Taylor's per Doc. # 2004-366552. We found and tied the monuments shown per the listed surveys and deeds. I calculated the centerline of Grass Heights Road per CS 4380, and described on M-15991-69. To do that I calculated the centerline position (1) at the record distance of 225.00 feet on the line from monument (4) to position (3). Position (3) is the computed NW corner of DLC #48, but the monument was lying on the ground, so I held the distance per CS 4227 from monument (5). I also held centerline monument (2). I calculated the intermediate centerline angle points between the ends at positions (1) and (2) using the BLM Grant Boundary Method to proportion. This method yielded a tight fit to the monument found at (6) and (7). The newly adjusted boundary between Properties 1 and 2 was set per the clients wishes.

This survey is being filed to correct the location of the adjusted property line that was shown between Properties 1 & 2 on CS 10920. This survey now depicts the line location as it was always intended. Because of this change the areas have changed slightly.



LINE TABLE

LINE	BEARING	DISTANCE
L1	S 89°46'59"W	32.41'
	(S 89°46'30"W)e	(32.37')e
L2	N 89°46'59"E	32.30'
	(S 89°46'30"W)e	(32.37')e
L3	N 39°12'40"E	165.51'
	(N 39°11'30"E)d	(167.48')d
L4	N 49°22'10"E	180.48'
	(N 49°21'00"E)d	(180.54')d