

# BOUNDARY SURVEY

FOR  
**KRISTIN R. CAMPBELL**

AUGUST 14, 2019  
IN THE NW 1/4, SECTION 12, T.12S., R.6W., W.M.  
PHILOMATH, BENTON COUNTY, OREGON

BENTON COUNTY  
SURVEYOR'S OFFICE  
C.S. FILE NO. 10971  
FILING DATE 9-17-19  
FILE SIZE 18x24

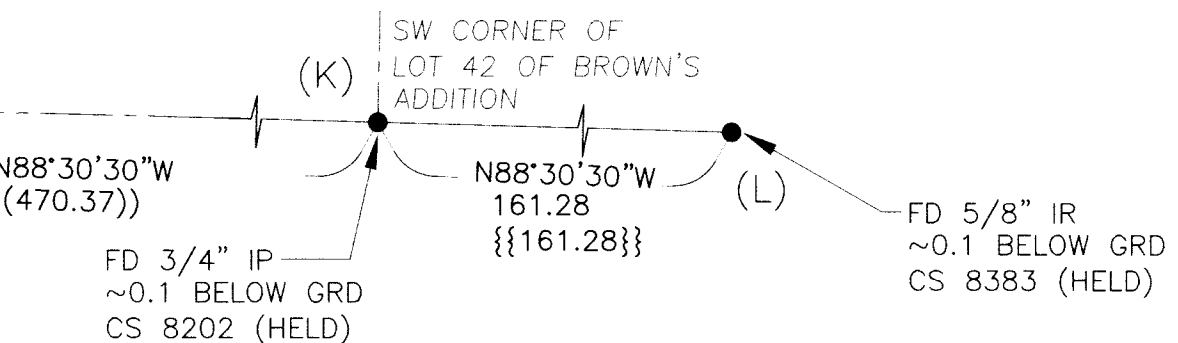
## NARRATIVE

THE PURPOSE OF THIS SURVEY IS TO MONUMENT THE BOUNDARY LINES OF TWO ADJACENT PARCELS, DESCRIBED, RESPECTIVELY, IN BENTON COUNTY DEED M-143919-92: "THE SOUTH ONE-HALF (S 1/2) OF LOT 63, BLOCK 16, PHILOMATH, BENTON COUNTY, OREGON." AND BENTON COUNTY DEED M-169848-93: "THE NORTH ONE-HALF OF EVEN WIDTH OF LOT 63, BLOCK 16, CITY OF PHILOMATH, BENTON COUNTY, OREGON"

THIS SURVEY FOUND, AND HELD AS THE BASIS OF BEARING, POINT (N), A 5/8" ROD WITH ORANGE PLASTIC CAP SET IN CS 10877, AND POINT (M), A 1" IRON PIPE AS RECORDED IN CS 8202. THE LINE BETWEEN POINTS (N) AND (M) IS THE CENTERLINE OF 15TH STREET, AN 80-FOOT RIGHT-OF-WAY. THE EAST LINE OF BLOCK 16 WAS ESTABLISHED 40-FEET WESTERLY, MEASURED AT RIGHT ANGLES, FROM THE CENTERLINE OF 15TH STREET. POINT (B), A 5/8" ROD WITH YELLOW PLASTIC CAP SET IN CS 8244, AND POINT (A), A 5/8" ROD SET IN CS 10006 WERE HELD TO ESTABLISH THE EAST RIGHT-OF-WAY LINE OF 14TH STREET, WHICH IS THE WEST LINE OF BLOCK 16. THE NORTH LINE OF LOTS 63 AND 64 IS THE SOUTH LINE OF THE EAST-WEST ALLEY, WHICH WAS ESTABLISHED BY THE RECORDED DISTANCE 13'-8" SOUTHERLY AT RIGHT ANGLE TO THE PROJECTION OF A LINE THROUGH POINTS (E) AND (F). TO ESTABLISH THE SOUTH LINE OF BLOCK 16, WHICH IS COLLINEAR WITH THE NORTH RIGHT-OF-WAY OF COLLEGE STREET, A BEST-FIT LINE WAS CALCULATED USING POINTS (G), (H), (I), (J), (K), AND (L). SAID BEST-FIT LINE HAPPENED TO PERFECTLY INTERSECT POINTS (K) AND (L), SO THOSE TWO POINTS WERE HELD. THE EAST LINE OF LOT 63 WAS ESTABLISHED BY SINGLE PROPORTIONING. THE COMMON BOUNDARY BETWEEN THE TWO SUBJECT PARCELS WAS ESTABLISHED BY SINGLE PROPORTIONING.

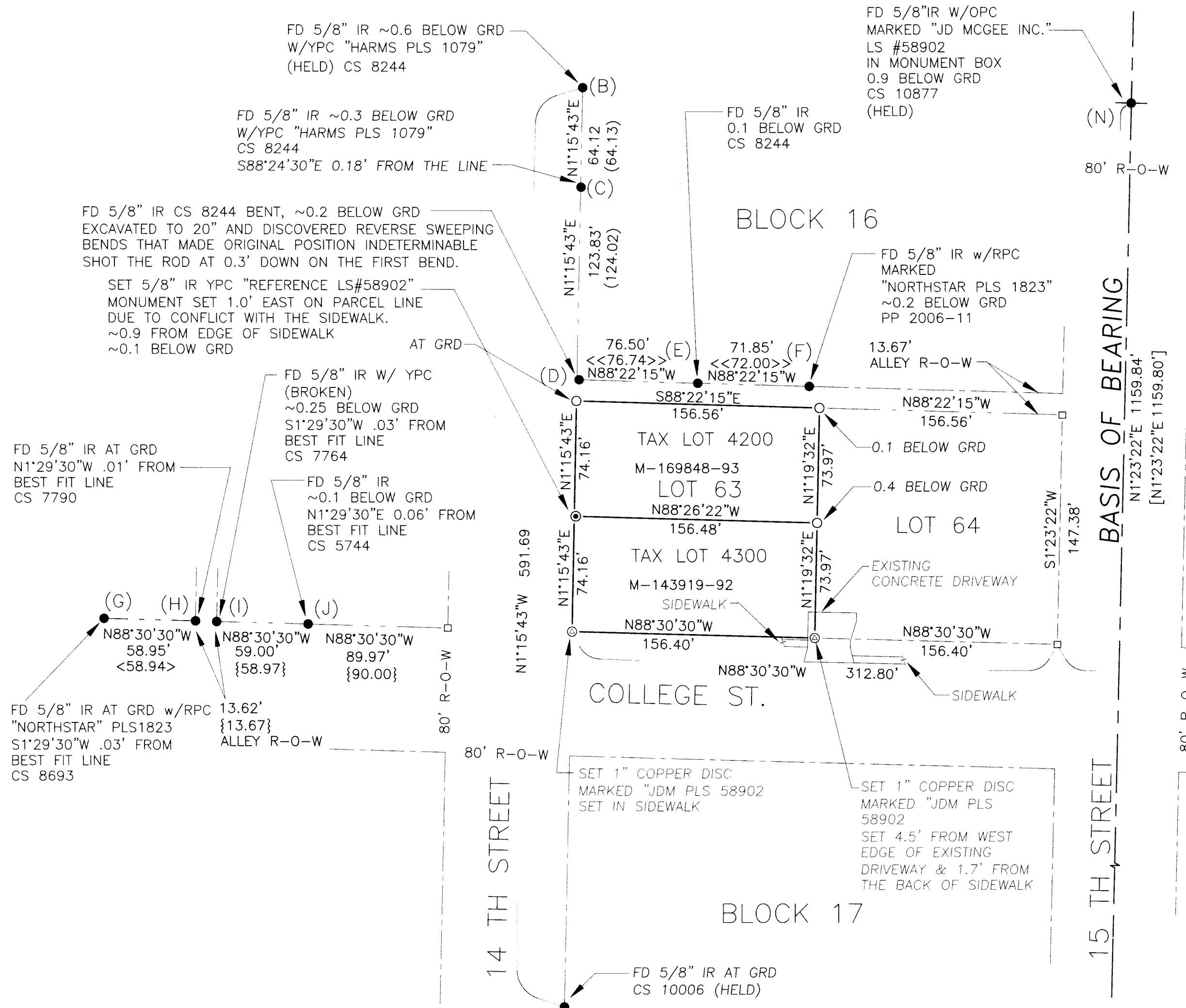
DUE TO A CONFLICT WITH THE EDGE OF EXISTING SIDEWALK, A REFERENCE MONUMENT WAS SET AS SHOWN ON THE COMMON BOUNDARY LINE OF THE TWO SUBJECT PARCELS.

ALL FOUND-MONUMENTS AND SET-MONUMENTS WERE MEASURED FROM RANDOMLY POSITIONED CONTROL POINTS USING A FOCUS 35 ROBOT (3-SECOND INSTRUMENT.) THIS SURVEY TURNED FOUR SETS OF DIRECT AND REVERSE SHOTS ON FOUND-MONUMENTS AND SET-MONUMENTS FOR POSITIONAL VERIFICATION.



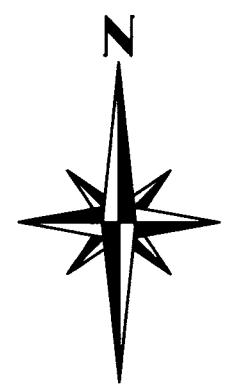
## LEGEND

- RECORD SURVEY BOUNDARY
- NEW BOUNDARY LINE
- - - R-O-W CENTERLINE
- - - R-O-W
- FOUND MONUMENT OF RECORD, AS NOTED.
- SET 5/8" X 30" REBAR W/ OPC, MARKED "JD MCGEE INC LS#58902"
- ⊙ SET 1" COPPER DISC MARKED "JDM, PLS 58902" IN CONCRETE
- ⊙ SET 5/8" X 30" REBAR W/ YPC, MARKED "REFERENCE LS #58902"
- CALCULATED POSITION
- XX MEASURED BY JD MCGEE INC.
- (XX) RECORD PER BENTON COUNTY SURVEY CS 8244
- ((XX)) RECORD PER BENTON COUNTY SURVEY CS 8202
- <XX> RECORD PER BENTON COUNTY SURVEY CS 8693
- <<XX>> RECORD PER BENTON COUNTY SURVEY PP 2006-11
- [XX] RECORD PER BENTON COUNTY SURVEY CS 10006
- {X} RECORD PER BENTON COUNTY SURVEY CS 7764
- {{XX}}
- OPC ORANGE PLASTIC CAP
- RPC RED PLASTIC CAP
- YPC YELLOW PLASTIC CAP
- GRD GROUND SURFACE
- IP IRON PIPE - DIMENSIONS ARE INSIDE DIAMETER
- IR IRON ROD
- R-O-W RIGHT-OF-WAY
- FD FOUND



REGISTERED  
PROFESSIONAL  
LAND SURVEYOR  
*John D. McGee*  
OREGON  
FEB. 8, 2000  
**JOHN D. MCGEE**  
#58902  
RENEWAL DATE: 12/31/20

**JDMcGee, Inc.**  
Engineering & Surveying 1215 Main Street  
Land Use Planning PO Box 1472  
Wastewater Design Philomath, OR 97370  
"Solving Problems for You" (541) 929-4226  
(541) 929-4227 fax



SCALE: 1" = 60'

- ### RECORD SURVEYS
- BENTON COUNTY CS 10877
  - BENTON COUNTY CS 10006
  - BENTON COUNTY CS 8693
  - BENTON COUNTY CS 8383
  - BENTON COUNTY CS 8244
  - BENTON COUNTY CS 8202
  - BENTON COUNTY CS 7790
  - BENTON COUNTY CS 7764
  - BENTON COUNTY CS 5744
  - BENTON COUNTY PP 2006-11

- ### BENTON COUNTY RECORDS
- M-143919-92
  - M-169848-93

DRAWN BY: GAW  
JDM PROJECT #: 19-53  
CHECKED BY: JDM