

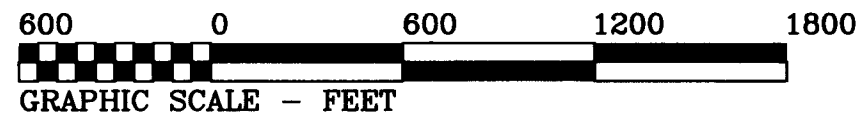
RECORD OF SURVEY
FOR
WEYERHAEUSER CO.

IN THE
SW 1/4 OF SECTION 14, SE & SW 1/4'S OF
SECTION 15, AND SE 1/4 SECTION 16,
T 13 S, R 8 W, W.M.
LINCOLN COUNTY, OREGON
AND ALL 1/4'S OF SECTION 22.
T 13 S, R 8 W, W.M.
BENTON COUNTY, OREGON

C.S. FILE NO. 10974
FILING DATE: 10-18-19
FILE SIZE: 18x24

THIS IS ALSO FILED AS
LINCOLN COUNTY
SURVEY No. 20916.

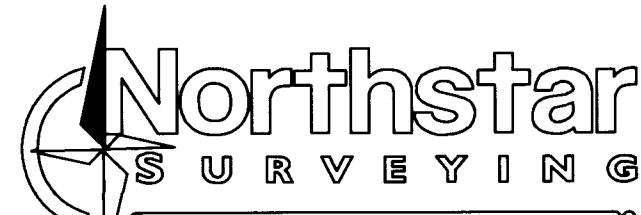
JUNE 28, 2019



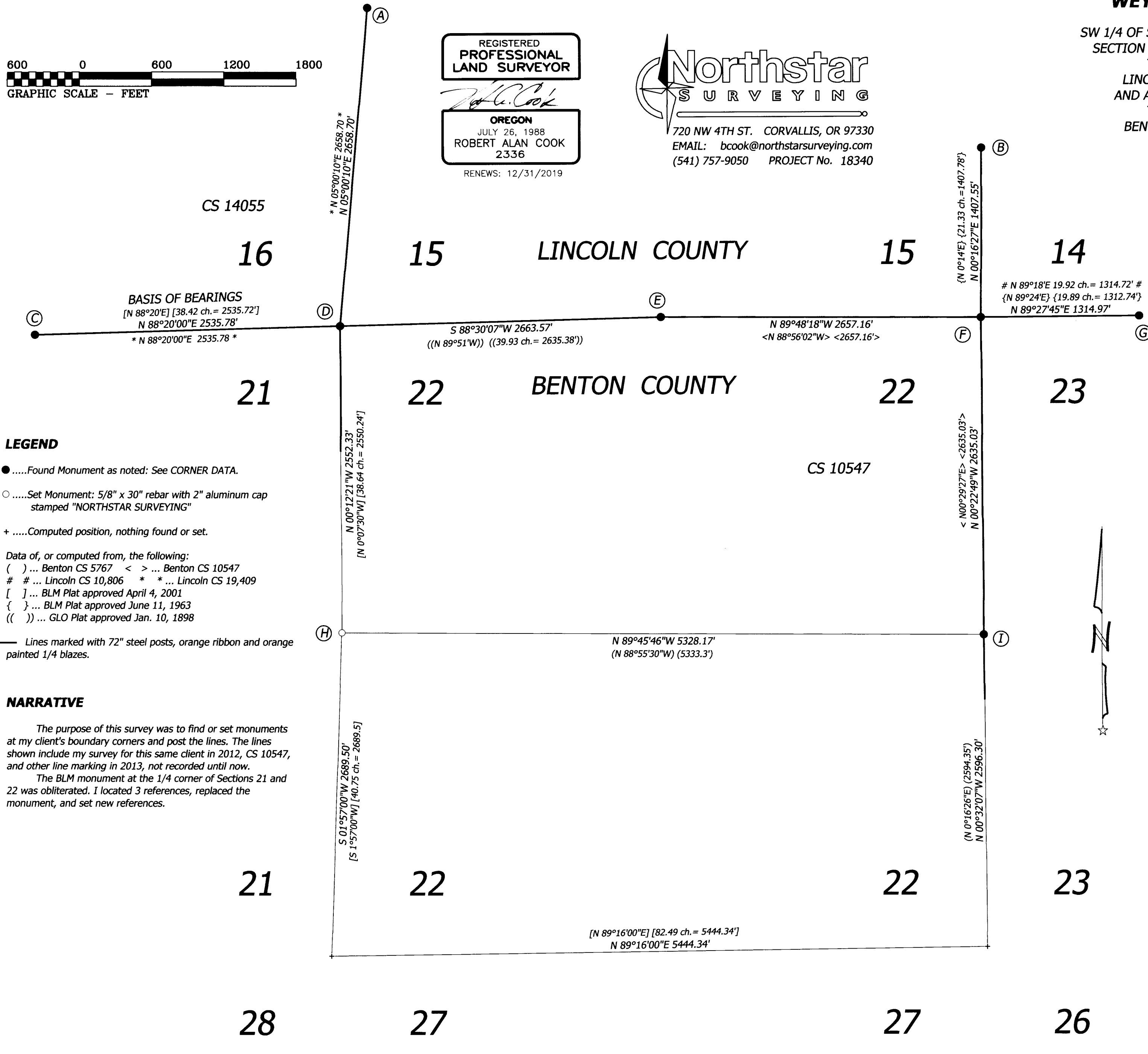
REGISTERED
PROFESSIONAL
LAND SURVEYOR

Robert Alan Cook
OREGON
JULY 26, 1988
ROBERT ALAN COOK
2336

RENEWS: 12/31/2019



720 NW 4TH ST. CORVALLIS, OR 97330
EMAIL: bcook@northstarsurveying.com
(541) 757-9050 PROJECT No. 18340



CORNER DATA

- (A) 1/4 CORNER SECTIONS 15 AND 16**
Found 1960 BLM brass cap up 4" in salal per C.S. 11,499.
20" Hemlock S 45°W 30 lks. with healed face and tag.
30" D.Fir windthrow N 33°E 20 lks.
- (B) SOUTH 1/16 CORNER SECTIONS 14 AND 15**
Found 1960 BLM brass cap up 6" at SW corner of clearcut.
20" D.Fir stump N 28°30'E 44 lks. with Healed face and tag.
22" Hemlock S 12°W 17 lks. with healed face and tag.
- (C) 1/4 CORNER SECTIONS 16 AND 21**
Found 1979 BLM brass cap up 2" per CS 9998 on south side of
clearcut on top of Easter Ridge.
24" D.Fir high cut stump N 39°30'E 39 lks.
28" D.Fir S 19°30'W 68 lks.
- (D) CORNER OF SECTIONS 15, 16, 21 AND 22**
Found 1960 BLM brass cap up 2" per C.S. 11,499 in heavy
rhododendron about 250 ft. South of a gravel road.
48" D.Fir stump N 66°E 75.5 lks. with a tin lid.
36" D.Fir stump N 23°E 64 lks. with a tin lid.
38" Hemlock stump N 28°W 25 lks. with scribes visible.
- (E) 1/4 CORNER SECTIONS 15 AND 22**
Found 1960 BLM brass cap and steel post riser.
14" D.Fir S 17°W 9.6 ft.
16" D.Fir S 64°E 13.2 ft.
- (F) CORNER OF SECTIONS 14, 15, 22, AND 23**
Found 1960 BLM brass cap and RR spike RM from Benton CS 10547.
30" Hemlock stump remains N 6°W 13 lks.
40" Hemlock stump remains N 59°E 53 lks.
14" D.Fir S 44°E 13.6 ft. healed face and tag.
24" D.Fir N 80°W 19.4 ft. with healed face and tag.
- (G) WEST 1/16 CORNER SECTIONS 14 AND 23**
Found 1960 BLM brass cap.
14" Hemlock N 73°W 17.0 ft.
- (H) 1/4 CORNER SECTIONS 21 AND 22**
Set 5/8" rod with 2" aluminum cap in mound of stones up 10" in
steep slide area among uprooted trees; about 100 ft north of road on
ridgetop at the NW corner of a clearcut. BLM pipe and cap are gone.
48" D.Fir stump S 73°E 39.6 ft. to center, no marks.
18" D.Fir windfall N 61°E 9.9 ft to center of roothole, paint and tag.
18" D.Fir windfall S 68°W 8.6 ft to center of roothole, paint and tag.
22" Hemlock N 82°W 31.6 ft. scribed "1/4S21" above "BT".
30" Hemlock S 53°W 25.5 ft. scribed "1/4S21" above "BT".
36" D.Fir stump w/ mag nail in center top, S 89°45'41"E 39.95'.
1/2" rod w/ yellow cap "N.STAR" S 63°24'40"E 39.07 ft.
- (I) 1/4 CORNER SECTIONS 22 AND 23**
Found 1960 BLM brass cap up 6" on ridge.
48" Hemlock snag N 74°E 56 lks.
16" D.Fir N 88°E 12.0 ft. with tag.
10" D.Fir S 60°W 18.0 ft. with tag.

LEGEND

-Found Monument as noted: See CORNER DATA.
 -Set Monument: 5/8" x 30" rebar with 2" aluminum cap stamped "NORTHSTAR SURVEYING"
 - +Computed position, nothing found or set.
- Data of, or computed from, the following:
() ... Benton CS 5767 < > ... Benton CS 10547
... Lincoln CS 10,806 * * ... Lincoln CS 19,409
[] ... BLM Plat approved April 4, 2001
{ } ... BLM Plat approved June 11, 1963
(()) ... GLO Plat approved Jan. 10, 1898

Lines marked with 72" steel posts, orange ribbon and orange painted 1/4 blazes.

NARRATIVE

The purpose of this survey was to find or set monuments at my client's boundary corners and post the lines. The lines shown include my survey for this same client in 2012, CS 10547, and other line marking in 2013, not recorded until now. The BLM monument at the 1/4 corner of Sections 21 and 22 was obliterated. I located 3 references, replaced the monument, and set new references.