

**RECORD OF SURVEY**  
for  
**KENT & KRISTEN ST. CLAIR**  
in the  
SW 1/4 OF SECTION 21  
&  
NW 1/4 OF SECTION 28  
T 11 S, R 7 W, W.M.  
BENTON COUNTY, OREGON

SEPTEMBER 2, 2019

**LINE TABLE**

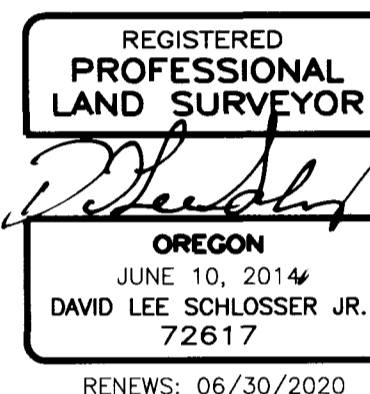
LINE	BEARING	DISTANCE
L1	N 43°13'08" W	193.17'
L2	S 16°48'14" E	453.70'
L3	N 00°00'19" E	40.55'
L4	N 89°52'13" E	127.45'
L5	N 00°05'08" W	99.00'
L6	S 43°13'08" E	50.53'
L7	S 43°13'08" E	135.56'
L8	N 89°52'13" E	34.61'
L9	S 89°52'48" W	123.47'

**LEGEND**

- .....Found monument as noted in Monument Table
- .....Set monument- 5/8" X 30" rebar with red cap stamped "NORTHSTAR SURVEYING"
- + .....Computed point (nothing set or found)
- () .....Record data from CS 8051
- [ ] .....Record data from CS 9268
- { } .....Record data from CS 9251
- < > .....Record data from CS 7690
- R.O.W....Right of Way
- T.L....Tax Lot
- x- ..FENCE

**MONUMENT TABLE**

- Ⓐ ...Found 3" Brass Disc, 1/4 Corner of Sections 20 & 21, 0.01' above surface, per CS 3392
- Ⓑ ...Found 3" Brass Disc, Corner of Sections 20,21,28, & 29, 0.4' above surface, per CS 3392
- Ⓒ ...Found 5/8" rod without cap, 0.4' below surface, per CS 9268
- Ⓓ ...Found 5/8" rod with cap stamped, "LS 1084", 0.4' below surface, per CS 7690
- Ⓔ ...Found 1-1/2" pipe, 1/4 Corner of Sections 21 & 28, 1.0' above surface, per CS 3781
- Ⓕ ...Found 5/8" rod with a 1-1/2" aluminum cap stamped "R/W 55+00 250L", 0.3' below surface, per ODOT R.O.W. Map 9B-5-17 "Dudlee Hill-Blodgett Section"
- Ⓖ ...Found 5/8" rod with a 1-1/2" aluminum cap stamped "R/W 61+00 250R", 0.3' below surface, per ODOT R.O.W. Map 9B-5-17 "Dudlee Hill-Blodgett Section"
- Ⓗ ...Found 5/8" rod with a 1-1/2" aluminum cap stamped "R/W 65+50 290R", 0.3' below surface, per ODOT R.O.W. Map 9B-5-17 "Dudlee Hill-Blodgett Section"
- Ⓘ ...Found 5/8" rebar with cap stamped "DARRYL HARMS PLS 1079", 0.4' above surface per, CS 8051
- Ⓢ ...Found 5/8" rod with an illegible 1-1/2" aluminum cap, 0.3' below surface, per ODOT R.O.W. Map 9B-5-17 "Dudlee Hill-Blodgett Section"
- Ⓚ ...Found 3/4" pipe with cap inside stamped "LS 1084", flush with surface, per CS 9251



**SURVEY NARRATIVE**

The purpose of this survey was to monument the North line of that tract of land conveyed to Kent & Kristen St. Clair through Instrument No. 2018-577530

**Basis of Bearings:**

The Basis of Bearings for this description is from a found 3" Brass Cap marking the Corner of Sections 20,21,28, & 29 of Township 11 South, Range 7 West, to a 1-1/2" pipe marking the Quarter corner between Sections 21 & 28, as shown on CS 8051.

**Boundary Determination:**

The boundary was dependent on a call of "the South 12 acres of the following described tract" in Deed 2018-577530 of Benton County Deed Records.

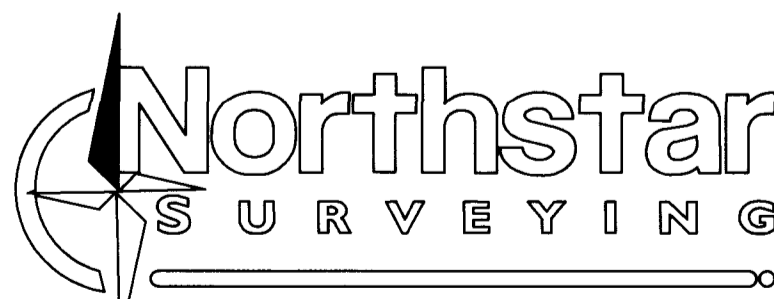
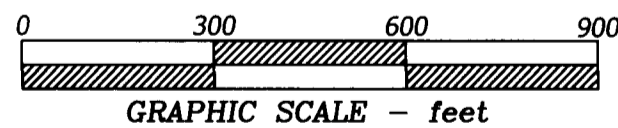
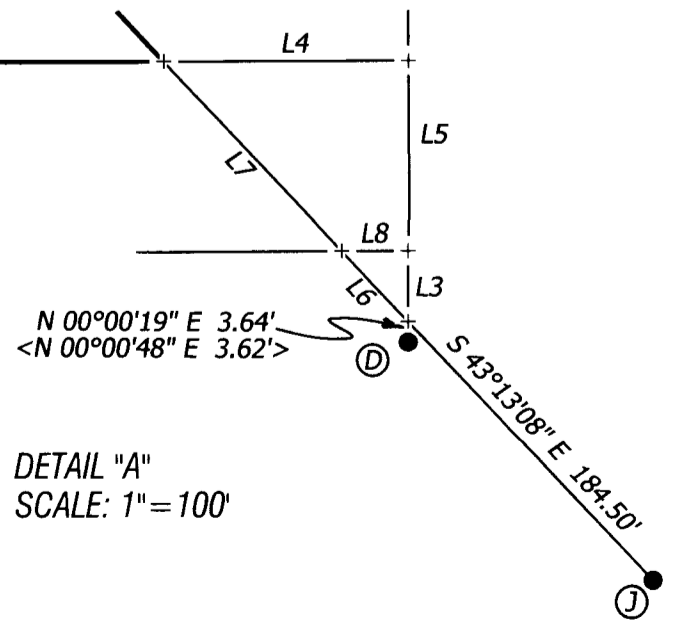
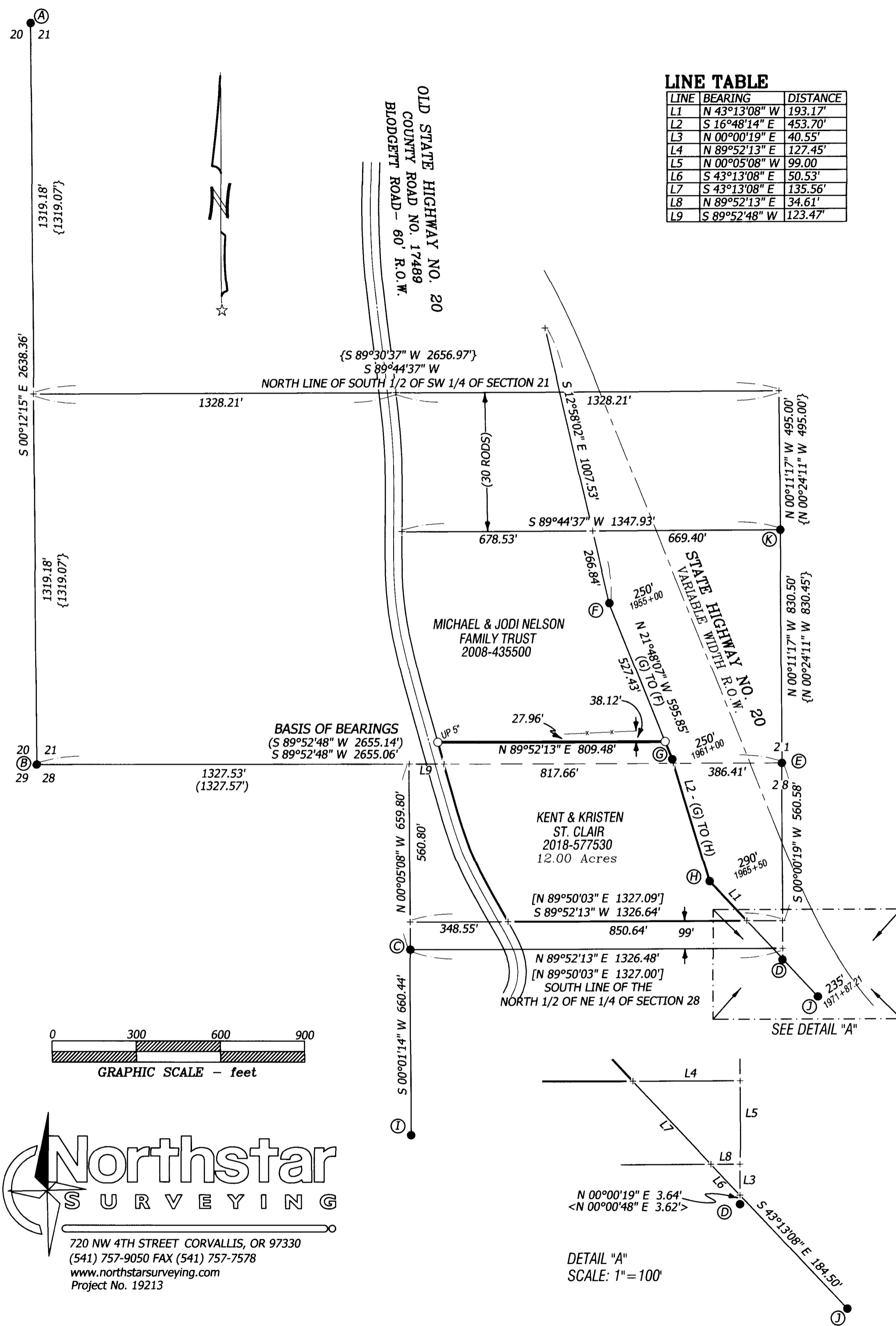
The East boundary of the subject property is the West Right of Way line of State Highway No. 20, which was calculated finding monuments, (F), (G), & (H), set through Oregon Department of Transportation Right of Way Map 9B-5-17 "Dudlee Hill-Blodgett Section".

I measured the traveled centerline of Old State Highway No. 20 (County Road No. 17489, Blodgett Road) and held it to establish the West boundary of the property, of which being the Easterly Right of Way line of said road. Full record width (60' total, 30' each side) for the Right of Ways was held from the tied centerline.

Per Deed No. 2018-577530, the North and South line of the property are described as, "being the South half of the SW quarter of Section 21, excepting the North 30 rods thereof, also the North half of the NE quarter of the NW quarter of section 28, excepting the South 99 feet (L3) thereof". Using monuments from CS 9268 and CS 8051, found to be in good position and condition, I calculated the NE quarter of the NW quarter holding monuments from CS 9268 & CS 7690, and held a line 99 feet North, parallel to the "NE 1/4 of the NW 1/4 of Section 28 line", as South line of the subject property.

The South Half of the SW quarter of Section 21 was re-established by single-proportion between (A) & (B) and holding record distance of 495.00 feet per CS 9251 from (G). The North 30 rods were excepted as per the Deed. The North line was held parallel to the re-established South line.

Note: The angle break at (C) was due to differences in measurements between the calculated 1/16 Corner between Sections 21 & 28, and the extended line from (I) to (C).



720 NW 4TH STREET CORVALLIS, OR 97330  
(541) 757-9050 FAX (541) 757-7578  
www.northstarsurveying.com  
Project No. 19213