

NARRATIVE

THE PURPOSE OF THIS SURVEY IS TO MONUMENT THE BOUNDARY LINES OF THE PROPERTY DESCRIBED IN BENTON COUNTY DEED 2019-582261: "LOTS 17 AND 18, BLOCK 2, PLAT OF TOWN OF ALSEA, IN THE COUNTY OF BENTON AND STATE OF OREGON. ALSO THAT PORTION OF VACATED ALLEY ADJACENT TO SAID LOTS AS SET FORTH IN VACATION ORDER RECORDED NOVEMBER 23, 1945, IN BOOK 108, PAGE 575, BENTON COUNTY DEED RECORDS."

THIS SURVEY FOUND, AND HELD AS THE BASIS OF BEARING, POINT (A), A 1-1/2" ALUMINUM CAP MARKED "BENTON COUNTY SURVEYOR" AS SET IN CS 10445, AND POINT (B), A 1" IRON PIPE AS RECORDED IN CS 8204.

THE NORTH LINE OF BLOCK 2 WAS ESTABLISHED BETWEEN POINTS (A) AND (B). THE PLAT DISTANCE IS 400.00 FEET AND THE MEASURED DISTANCE IS 399.99 FEET. THE SOUTH LINE OF BLOCKS 2 AND 3 WAS ESTABLISHED BETWEEN POINTS (C) AND (D). THE PLAT DISTANCE IS 740.00 FEET AND THE MEASURED DISTANCE IS 740.08 FEET. SINCE THE MEASURED AND RECORD DISTANCES ARE SIMILAR, THE PROPORTIONAL CHANGE IN LOT DIMENSIONS IS NEGLIGIBLE, SO RECORD DISTANCES WERE HELD FOR THIS SURVEY.

ALL FOUND-MONUMENTS AND SET-MONUMENTS WERE MEASURED FROM RANDOMLY POSITIONED CONTROL POINTS USING A FOCUS 35 ROBOT (3-SECOND INSTRUMENT.)

RECORD SURVEYS

BENTON COUNTY SP0002-029
BENTON COUNTY PP1993-036
BENTON COUNTY CS 10781
BENTON COUNTY CS 10494
BENTON COUNTY CS 10445
BENTON COUNTY CS 9593
BENTON COUNTY CS 8204
BENTON COUNTY CS 7073
BENTON COUNTY CS 7072
BENTON COUNTY CS 6551

BENTON COUNTY RECORDS

2019-582261
2018-568328
2010-470144
2010-469231
2009-451751
2006-409883
2005-392080

BOUNDARY SURVEY
FOR
GEORGE R. & KANDI L. BARNES

LOCATED IN
BLOCK 2 OF THE TOWN OF ALSEA
TAXLOT 2300 IN THE SE 1/4, SECTION 1, T14S, R.8W, W.M.
ALSEA, BENTON COUNTY, OREGON

NOVEMBER 06, 2019

BENTON COUNTY
SURVEYOR'S OFFICE
C.S. FILE NO. **10988**
FILING DATE **1-9-20**
FILE SIZE **18x24**

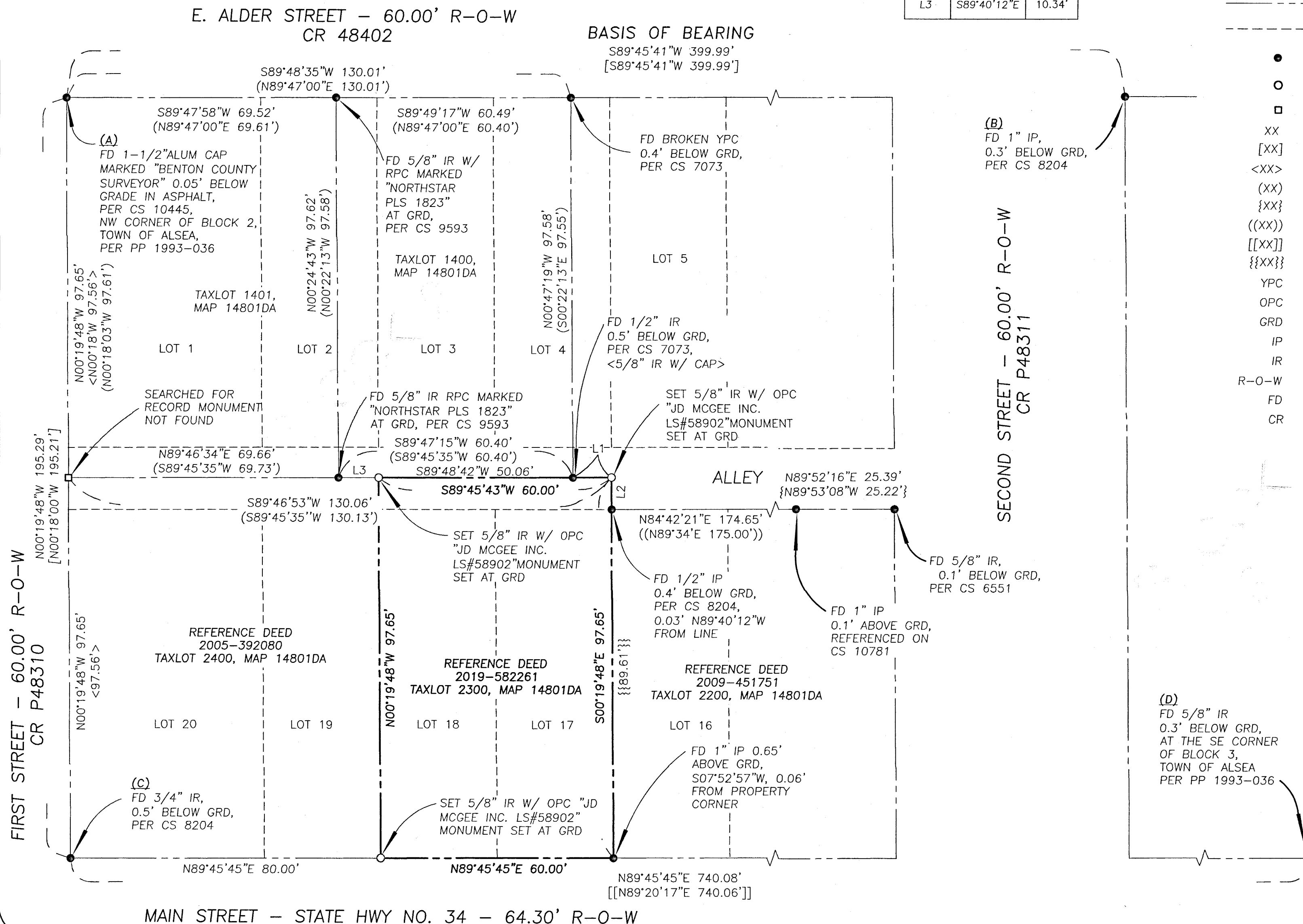
LINE TABLE

LINE	BEARING	LENGTH
L1	N89°30'41"E	9.94'
L2	S0°31'21"E	8.19'
L3	S89°40'12"E	10.34'

LEGEND

- RECORD SURVEY BOUNDARY OF TAXLOT 2300
- RECORD SURVEY BOUNDARY
- RECORD LOT BOUNDARY

- FOUND MONUMENT OF RECORD, AS NOTED.
- SET 5/8" X 30" REBAR W/ OPC, MARKED "JD MCGEE INC LS#58902"
- CALCULATED POSITION
- XX MEASURED BY JD MCGEE INC.
- [XX] RECORD INFORMATION PER PP 1993-036
- <XX> RECORD PER BENTON COUNTY SURVEY CS 7073
- (XX) RECORD PER BENTON COUNTY SURVEY CS 9593
- {XX} RECORD PER BENTON COUNTY SURVEY CS 10781
- ((XX)) RECORD PER BENTON COUNTY SURVEY CS 6551
- [[XX]] RECORD PER BENTON COUNTY SURVEY CS 10494
- [[{XX}]] RECORD PER BENTON COUNTY SURVEY CS 8204
- YPC YELLOW PLASTIC CAP
- OPC ORANGE PLASTIC CAP
- GRD GROUND SURFACE
- IP IRON PIPE - DIMENSIONS ARE INSIDE DIAMETER
- IR IRON ROD
- R-O-W RIGHT-OF-WAY
- FD FOUND
- CR COUNTY ROAD IDENTIFICATION



SCALE 1" = 20'

REGISTERED
PROFESSIONAL
LAND SURVEYOR
John D. McGee
OREGON
FEB. 8, 2000
JOHN D. MCGEE
#58902
RENEWAL DATE: 12/31/20

JDMcGee, Inc.
Engineering & Surveying
Land Use Planning
Wastewater Design
"Solving Problems for You"

1215 Main Street
PO Box 1472
Philomath, OR 97370
(541) 929-4226
(541) 929-4227 fax

DRAWN BY: ZZA
JDM PROJECT #: 19-60
CHECKED BY: JDM