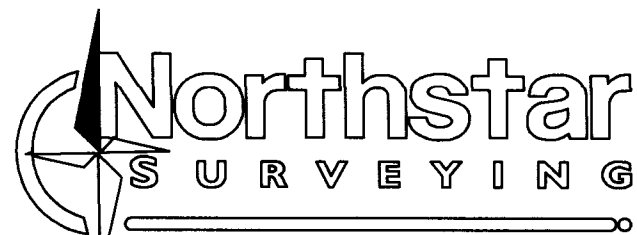


REGISTERED
PROFESSIONAL
LAND SURVEYOR

OREGON
JULY 26, 1988
ROBERT ALAN COOK
2336

RENEWS: 12/31/2021



720 NW 4TH ST. CORVALLIS, OR 97330
EMAIL: bcook@northstarsurveying.com
(541) 757-9050 PROJECT No. 18350

RECORD OF SURVEY
FOR
BARBARA SMITH
IN THE
NE 1/4 OF SECTION 30
T 10 S, R 4 W, W.M.
CITY OF ADAIR VILLAGE
BENTON COUNTY, OREGON

AUGUST 26, 2019

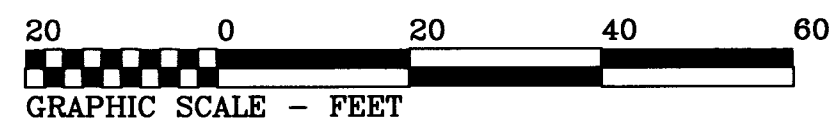
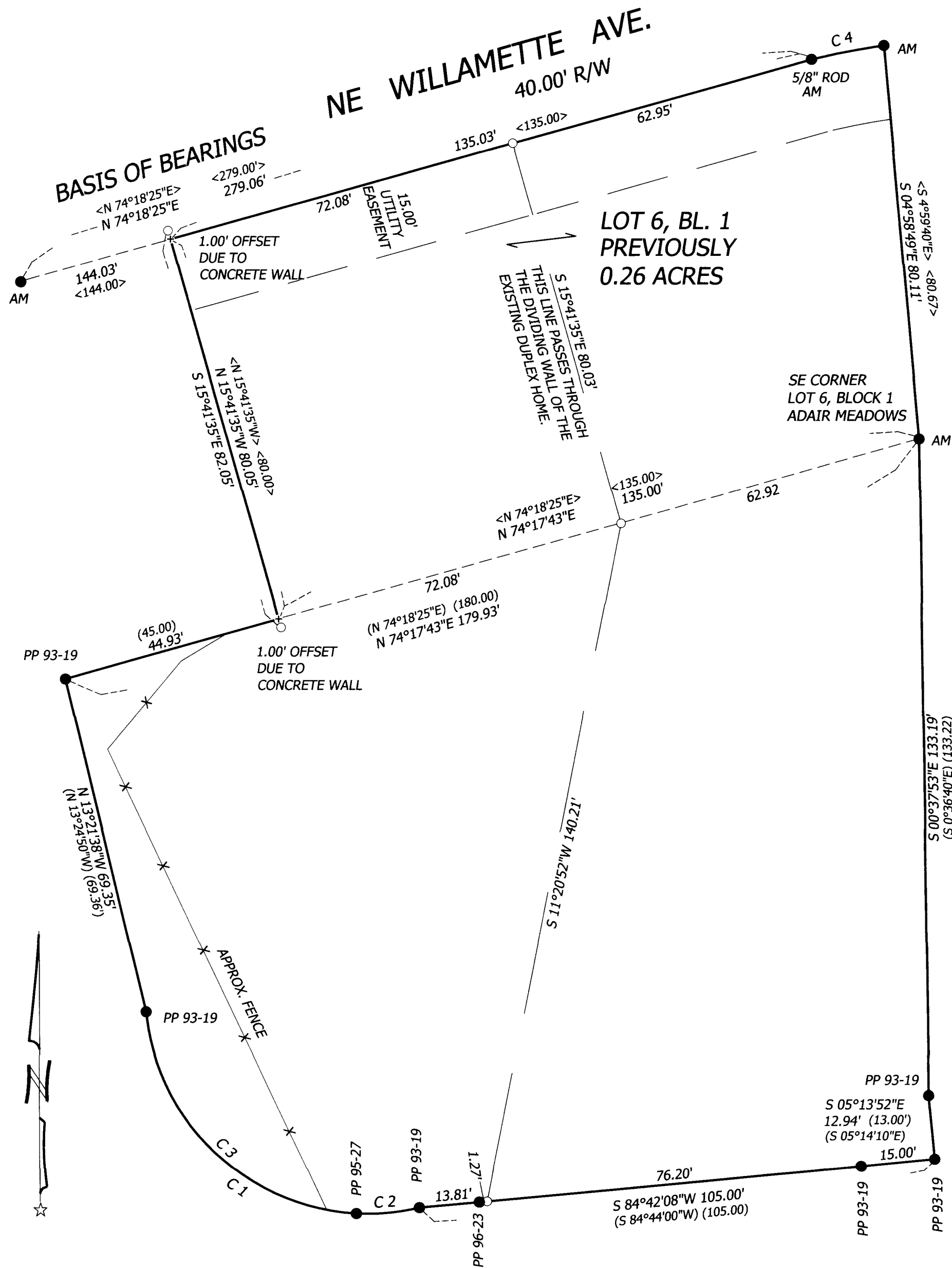
Benton County
Surveyor's Office

O.S. FILE NO. 10992
FILING DATE 8-25-20
FILE SIZE 18x24

NARRATIVE

The INITIAL purpose of this survey was to find and set monuments at my client's boundary corners, and then divide the properties evenly with the dividing line passing through the common wall between the duplex units. Due to delays beyond my control, I am forced, by law, to file this record of survey showing the monuments set for this survey.

The two monuments defining the west line of Lot 6 were destroyed by the construction of a concrete wall. I placed reference monuments at 1.00 foot extensions as shown. I tied into the nearest monuments along Willamette Street and calculated the NW corner of Lot 6 by single proportion relative to the data from the subdivision plat as shown.



LEGEND

- Found Monument as noted.
AM = 1/2" rod per Adair Meadows
PP 93-19 = 5/8" rod per Partition Plat No. 1993-19
PP 95-27 = 5/8" rod per Partition Plat No. 1995-27
PP 96-23 = 5/8" rod per Partition Plat No. 1996-23
 - Set Monument: 5/8" x 30" rebar with red plastic cap stamped "NORTHSTAR SURVEYING".
 - + Computed position, nothing found or set.
- Data of, or computed from, the following:
() ...Partition Plat No 1993-19
< > ...Adair Meadows
{ } ...Partition Plat No. 1995-27
- X — Fence Line

CURVE TABLE

Curve	Radius	Length	Delta	Chord	Chord Bear.
C1	45.00'	77.09'	98°08'59"	68.00'	N 54°23'22" W
	{45.00'}	{77.13'}	{98°12'23"}	{68.03'}	{N 54°20'30" W}
C2	45.00'	12.89'	16°24'37"	12.84'	S 84°44'27" W
	{45.00'}	{12.85'}	{16°21'23"}	{12.80'}	{S 84°44'00" W}
C3	45.00'	64.20'	81°44'23"	58.89'	N 46°11'03" W
	{45.00'}	{64.28'}	{81°51'00"}	{58.96'}	{N 46°09'49" W}
C4	152.99'	14.93'	5°35'23"	14.92'	N 79°18'56" E
	<152.99'>	<15.00'>	<5°37'03">	<14.99'>	<N 77°06'57" E>