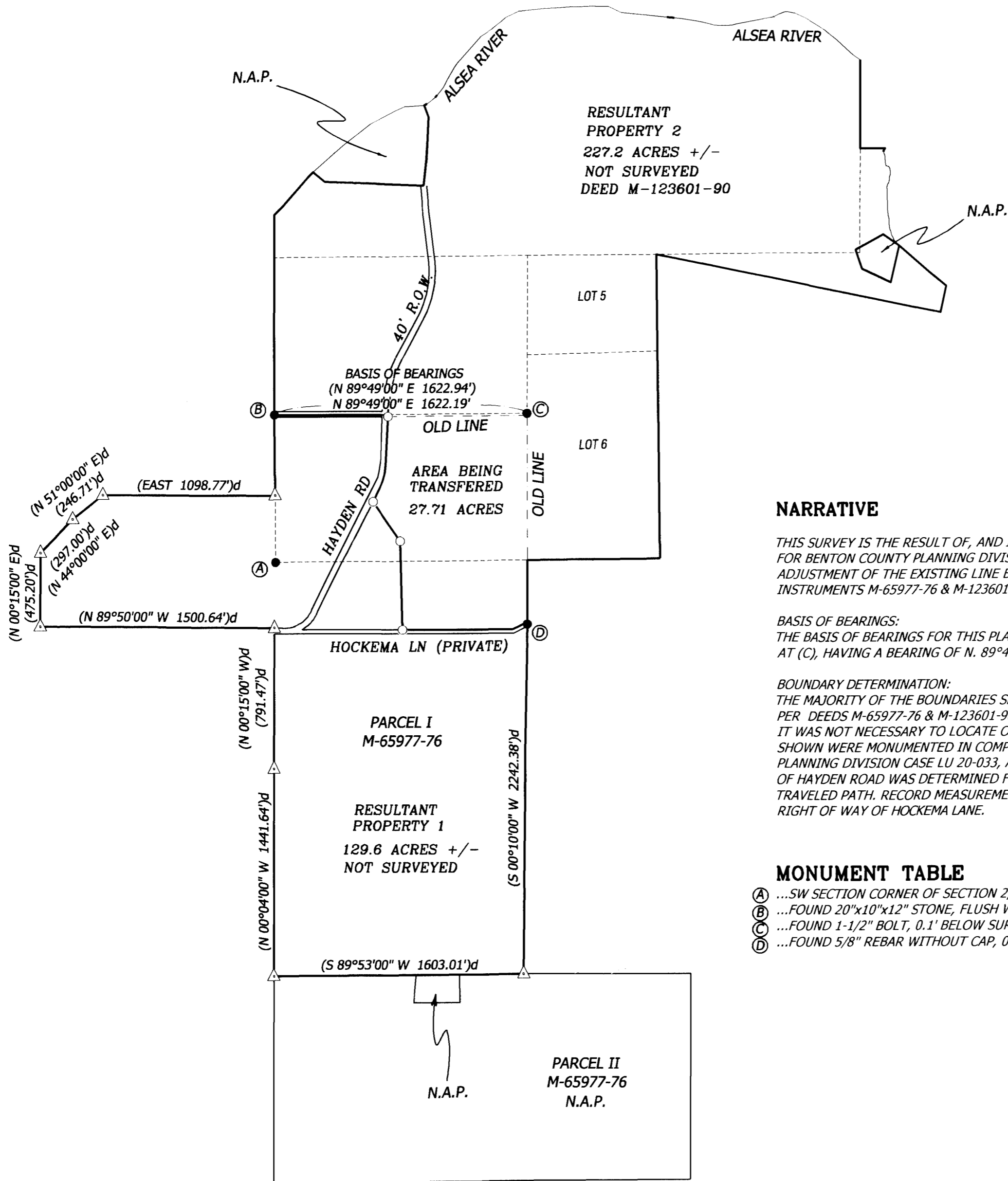


RECORD OF SURVEY
of
PROPERTY LINE ADJUSTMENT
for
LOUIS MOHNIKE
in
SECTION 2
and the
NW 1/4 OF SECTION 11
T 14 S, R 8 W, W.M.
BENTON COUNTY, OREGON

OCTOBER 30, 2020
PAGE 1 OF 2

Benton County
Surveyor's Office

C.S. FILE NO. 11064
FILING DATE 11/5/21
FILE SIZE 18.274



NARRATIVE

THIS SURVEY IS THE RESULT OF, AND IS IN COMPLIANCE WITH, THE CONDITIONS OF APPROVAL FOR BENTON COUNTY PLANNING DIVISION CASE LU-20-033. IT EFFECTS THE PROPERTY LINE ADJUSTMENT OF THE EXISTING LINE BETWEEN THOSE TRACTS OF LAND CONVEYED THROUGH INSTRUMENTS M-65977-76 & M-123601-90.

BASIS OF BEARINGS:
THE BASIS OF BEARINGS FOR THIS PLAT IS FROM A 20"x10"x12" STONE AT (B), TO A 1-1/2" BOLT AT (C), HAVING A BEARING OF N. 89°49'00" E., AS SHOWN ON CS HARDCOPY 14-8-0001.

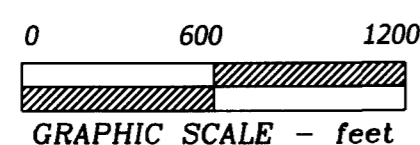
BOUNDARY DETERMINATION:
THE MAJORITY OF THE BOUNDARIES SHOWN WERE RECREATED UTILIZING RECORD INFORMATION PER DEEDS M-65977-76 & M-123601-90. DUE TO THE SIZE OF THE PROPERTIES BEING SURVEYED, IT WAS NOT NECESSARY TO LOCATE OR MONUMENT ANY ADDITIONAL CORNERS. THE NEW LINES SHOWN WERE MONUMENTED IN COMPLIANCE WITH THE CONDITIONS OF APPROVAL PER BENTON COUNTY PLANNING DIVISION CASE LU-20-033, AND AT THE REQUEST OF THE CLIENT. THE RIGHT OF WAY OF HAYDEN ROAD WAS DETERMINED FROM CENTERLINE LOCATES MADE IN THE FIELD ALONG THE TRAVELED PATH. RECORD MEASUREMENTS PER CS 7137 WERE UTILIZED TO DETERMINE THE RIGHT OF WAY OF HOCKEMA LANE.

MONUMENT TABLE

- (A) ...SW SECTION CORNER OF SECTION 2, FOUND 3-1/4" BRASS CAP, 1.1' BELOW SURFACE, PER CS 7078
- (B) ...FOUND 20"x10"x12" STONE, FLUSH WITH SURFACE PER CS HARDCOPY 14-8-0001
- (C) ...FOUND 1-1/2" BOLT, 0.1' BELOW SURFACE, PER CS HARDCOPY 14-8-0001
- (D) ...FOUND 5/8" REBAR WITHOUT CAP, 0.2' BELOW SURFACE, PER CS 7137

LEGEND

-FOUND MONUMENT AS NOTED IN MONUMENT TABLE
-SET MONUMENT- 5/8" X 30" REBAR WITH RED CAP STAMPED "NORTHSTAR SURVEYING"
- △COMPUTED POINT (NOTHING SET OR FOUND)
- ()aRECORD DATA FROM CS HARDCOPY 14-8-0001
- ()bRECORD DATA FROM DEED M-123601-90
- ()cRECORD DATA FROM CS 7137
- ()dRECORD DATA FROM DEED M-65977-76
- R.O.W....RIGHT OF WAY
- T.L....TAX LOT
- N.A.P....NOT A PART OF THE SURVEY



LU-20-033
PROPERTY LINE ADJUSTMENT APPROVED

Greg Vernel 11/4/2021
BENTON COUNTY PLANNING OFFICIAL **DATE**

REGISTERED
PROFESSIONAL
LAND SURVEYOR

David Lee Schlosser Jr.
OREGON
JUNE 10, 2014
DAVID LEE SCHLOSSER JR.
72617

RENEWS: 06/30/2022

Northstar
SURVEYING

720 NW 4TH STREET CORVALLIS, OR 97330
(541) 757-9050 FAX (541) 757-7578
www.northstarsurveying.com
Project No. 20116 BWC

**RECORD OF SURVEY
of
PROPERTY LINE ADJUSTMENT**
for
LOUIS MOHNIKE
in
SECTION 2
and the
NW 1/4 OF SECTION 11
T 14 S, R 8 W, W.M.
BENTON COUNTY, OREGON

OCTOBER 30, 2020
PAGE 2 OF 2

**Benton County
Surveyor's Office**
C.S. FILE NO. 11064
FILING DATE 11/5/21
FILE SIZE 18x24

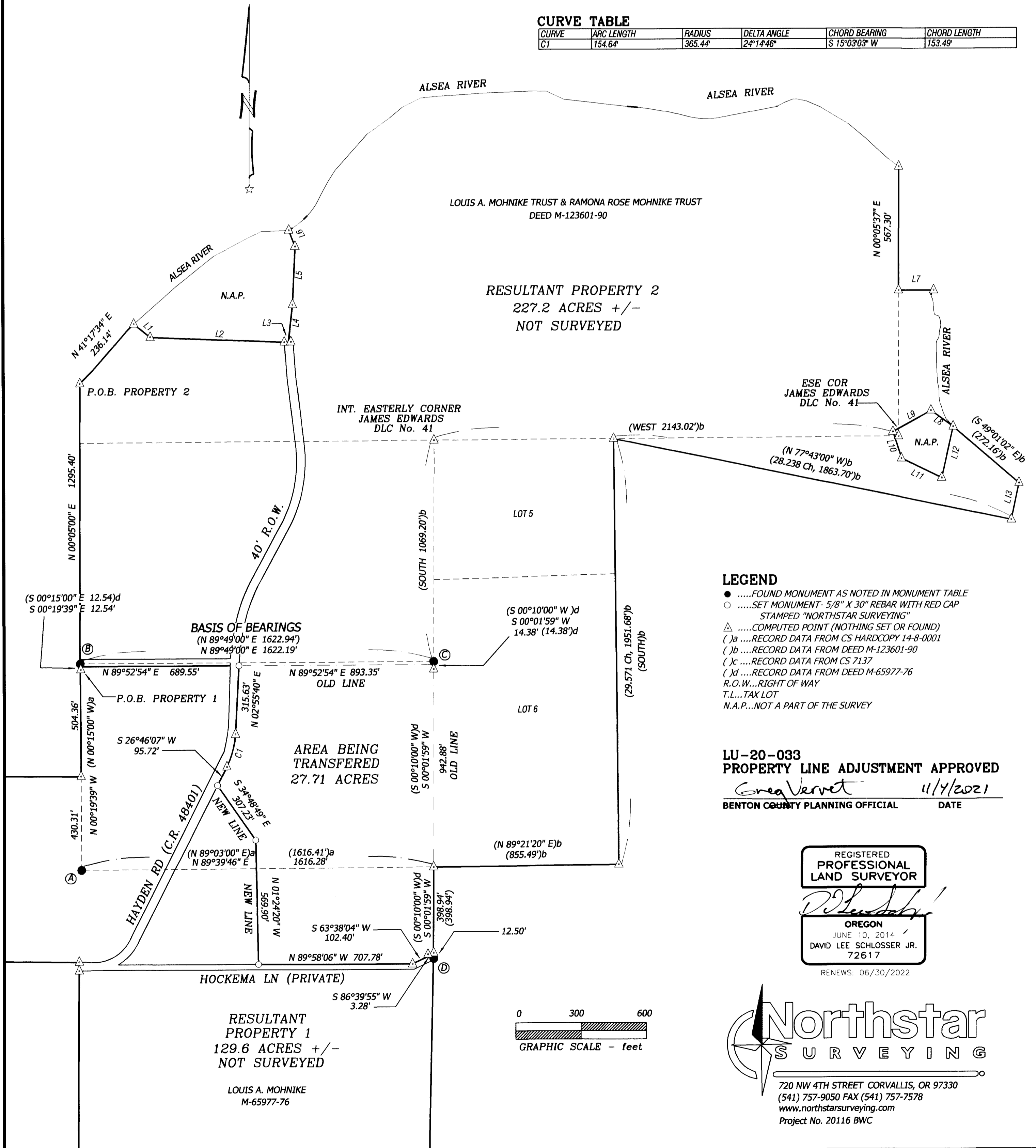
LINE TABLE

LINE	BEARING	DISTANCE
L1	N 51°03'45" W	95.40'
L2	N 87°54'30" W	614.11'
L3	N 87°54'30" W	21.62'
L4	S 06°13'00" E	151.46'
L5	S 00°33'00" E	297.00'
L6	S 16°52'00" E	58.00'
L7	S 89°53'57" E	161.10'
L8	S 57°45'45" E	123.01'
L9	N 60°17'00" E	201.16'
L10	N 19°00'15" W	128.90'
L11	N 64°48'45" W	203.33'
L12	S 12°16'45" W	248.21'
L13	N 11°39'27" E	172.06'

*LINES IN TABLE ARE RECORD BEARINGS & DISTANCES
PER DEED M-123601-90

CURVE TABLE

CURVE	ARC LENGTH	RADIUS	DELTA ANGLE	CHORD BEARING	CHORD LENGTH
C1	154.64'	365.44'	24°14'46"	S 15°03'03" W	153.49'

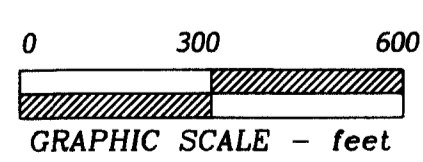


LEGEND

-FOUND MONUMENT AS NOTED IN MONUMENT TABLE
-SET MONUMENT- 5/8" X 30" REBAR WITH RED CAP
STAMPED "NORTHSTAR SURVEYING"
- △COMPUTED POINT (NOTHING SET OR FOUND)
- ()aRECORD DATA FROM CS HARDCOPY 14-8-0001
- ()bRECORD DATA FROM DEED M-123601-90
- ()cRECORD DATA FROM CS 7137
- ()dRECORD DATA FROM DEED M-65977-76
- R.O.W...RIGHT OF WAY
- T.L...TAX LOT
- N.A.P...NOT A PART OF THE SURVEY

**LU-20-033
PROPERTY LINE ADJUSTMENT APPROVED**
Greg Vernet 11/4/2021
BENTON COUNTY PLANNING OFFICIAL DATE

REGISTERED
**PROFESSIONAL
LAND SURVEYOR**
David Lee Schlosser Jr.
OREGON
JUNE 10, 2014
DAVID LEE SCHLOSSER JR.
72617
RENEWS: 06/30/2022



**Northstar
SURVEYING**
720 NW 4TH STREET CORVALLIS, OR 97330
(541) 757-9050 FAX (541) 757-7578
www.northstarsurveying.com
Project No. 20116 BWC