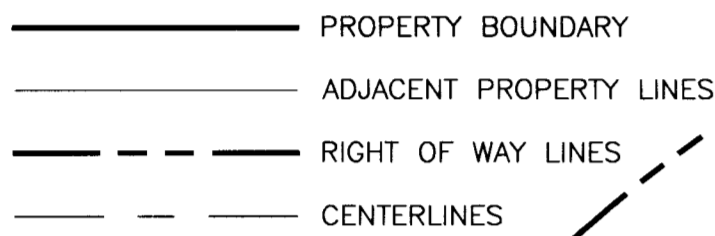


LEGEND

- SET 5/8" x 30" I.R. W/ YPC STAMPED 'MSS ENGINEERING'
- FOUND MONUMENT
- () DENOTES RECORD DATA PER R1
- [] DENOTES INFORMATION CALCULATED FROM RECORD DATA PER R1
- ⑤0 FOUND MONUMENT REFERENCE; SEE TABLE
- IR IRON ROD
- YPC YELLOW PLASTIC CAP
- D CENTRAL ANGLE (DELTA)
- CH LONG CHORD
- L ARC LENGTH
- R RADIUS
- TEXT MINTY ACRES NO. 2 LOT & BLOCK INFO



MSS INC
 215 NW 4TH STREET
 CORVALLIS, OR 97330
 (541) 753-1320
 PROJECT 21052

REGISTERED
 PROFESSIONAL
 LAND SURVEYOR
 OREGON
 MAY 28, 2015
 PETER J. SEADERS
 60183PLS
 RENEWS: 06/30/22

C.S.
 RECORD OF SURVEY
 FOR
MARY-JO SCHULTZ
 LOCATED IN THE
 S.W. 1/4 OF THE S.E. 1/4 OF SECTION 2
 T. 12S, R. 5W, WILLAMETTE MERIDIAN
 CITY OF CORVALLIS
 BENTON COUNTY, OREGON
 SEPTEMBER 28, 2021

FOUND MONUMENT REFERENCE:

- ⑤0 3/4" IR (NO CAP) PER R1, HELD
- ⑤1 3/4" IR (NO CAP) PER R1, N43°43'03"W 0.37' FROM COMPUTED POSITION
- ⑤2 3/4" IR (NO CAP) PER R1, S70°33'59"E 0.40' FROM COMPUTED POSITION
- ⑤3 3/4" IR (NO CAP) PER R1, HELD
- ⑤4 3/4" IR (NO CAP) PER R1, HELD
- ⑤5 3/4" IR (NO CAP) PER R1, HELD
- ⑤6 3/4" IR (NO CAP) PER R1, HELD
- ⑤7 3/4" IR (NO CAP) PER R1, HELD
- ⑤8 3/4" IR (NO CAP) PER R1, HELD

Benton County
 Surveyor's Office
 C.S. FILE NO. 11070
 FILING DATE 1-18-22
 FILE SIZE 18x24

SURVEY NARRATIVE

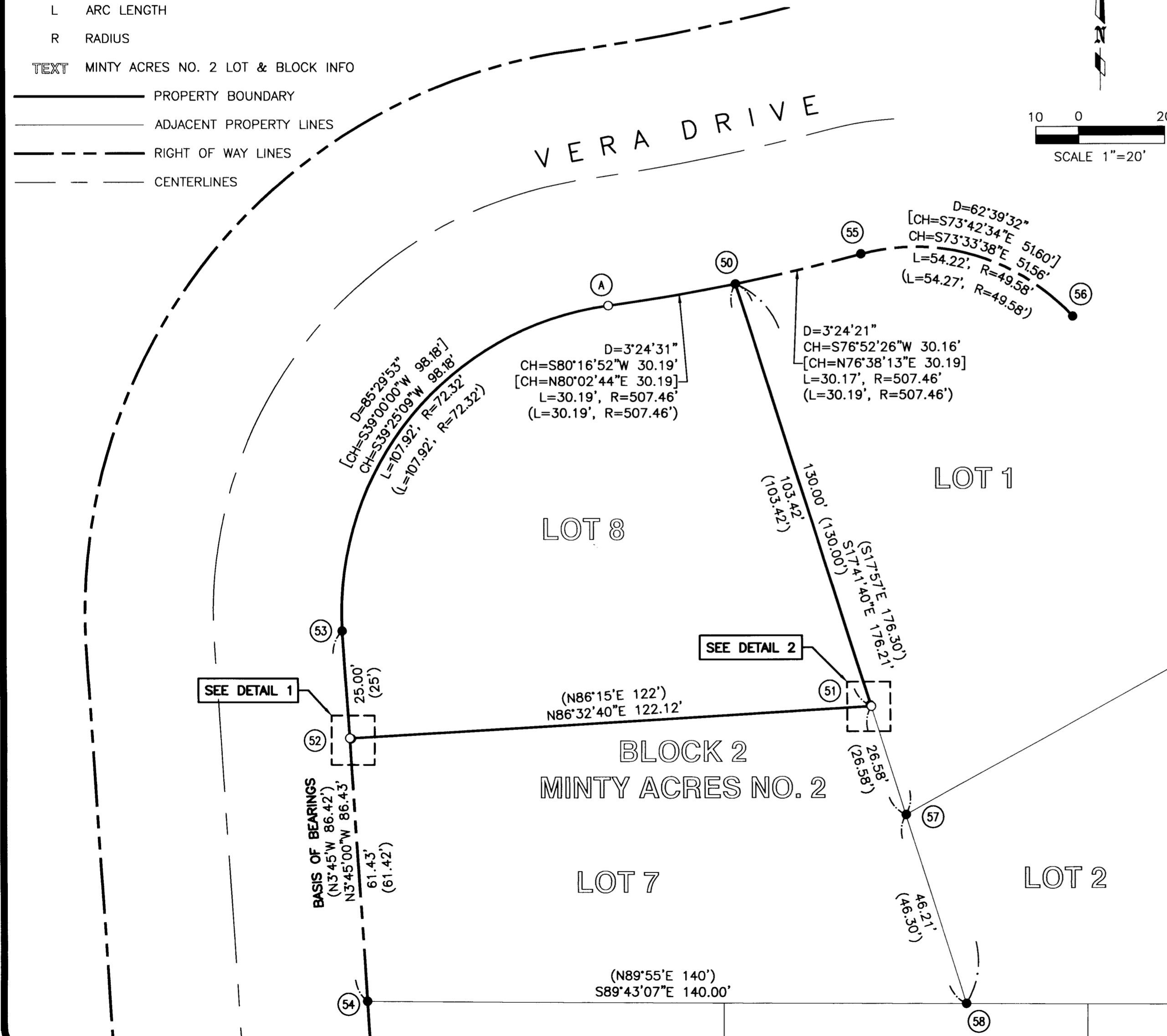
THE PURPOSE OF THIS SURVEY IS TO ESTABLISH AND MONUMENT THE CORNERS OF LOT 8, BLOCK 2 OF MINTY ACRES NO. 2.

THE BASIS OF BEARINGS WAS HELD BETWEEN MONUMENTS (53) & (54) PER R1.

MONUMENTS (50) & (53) WERE HELD AS FOUND FOR THE LOT 8 CORNERS. HOWEVER, MONUMENTS (51) & (52) WERE FOUND SUFFICIENTLY FAR FROM RECORD POSITIONS THAT I AM NOT CONVINCED THEY ARE ORIGINAL AND UNDISTURBED BASED ON THE RELATIVE PRECISION OF OTHER MONUMENTS FOUND IN THE AREA WHICH GENERALLY WERE IN GOOD AGREEMENT WITH THE ORIGINAL PLAT. TO RE-ESTABLISH THE SOUTHEAST CORNER, I HELD MONUMENTS (50) & (58) FOR THE EAST LINE, AND PROPORTIONED THE LINE BETWEEN MONUMENTS (50) & (57) PER R1. THE RESULTANT DIMENSIONS FOR THE EAST LINE MATCHED RECORD LENGTHS DOWN TO THE NEAREST HUNDREDTH OF A FOOT. FOR THE SOUTHWEST CORNER, I HELD AND PROPORTIONED THE LINE BETWEEN MONUMENTS (53) & (54) PER R1. RESULTANT DIMENSIONS FOR THE SOUTHWEST LINE WERE ALSO WITHIN 0.01' OF RECORD LENGTHS. I RE-ESTABLISHED POINT (A) AT THE COMPUTED POINT OF INTERSECTION OF THE RECORD CHORD LENGTHS OF THE TWO CURVES BETWEEN MONUMENTS (50) & (53). I THEN ASSIGNED THE CURVES THEIR RECORD RADII PER R1.

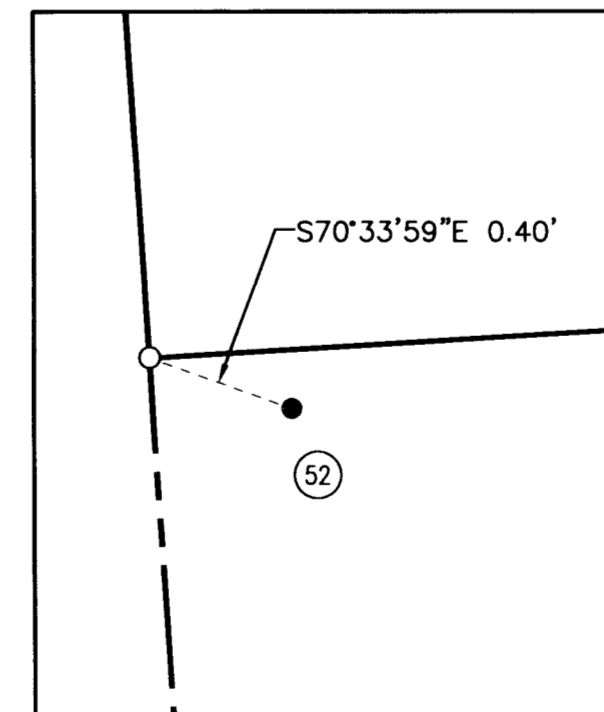
SURVEY REFERENCES:

R1 SP0004-054 MINTY ACRES NO. 2



DETAIL 1

SCALE: 1" = 0.5'



DETAIL 2

SCALE: 1" = 0.5'

