

C.S. # 1111

Hardcopy 10-7#1

also see notes in file

F. B. 98-9

CS 272

Began at S.W. COR
See 12, T.10S R.7W

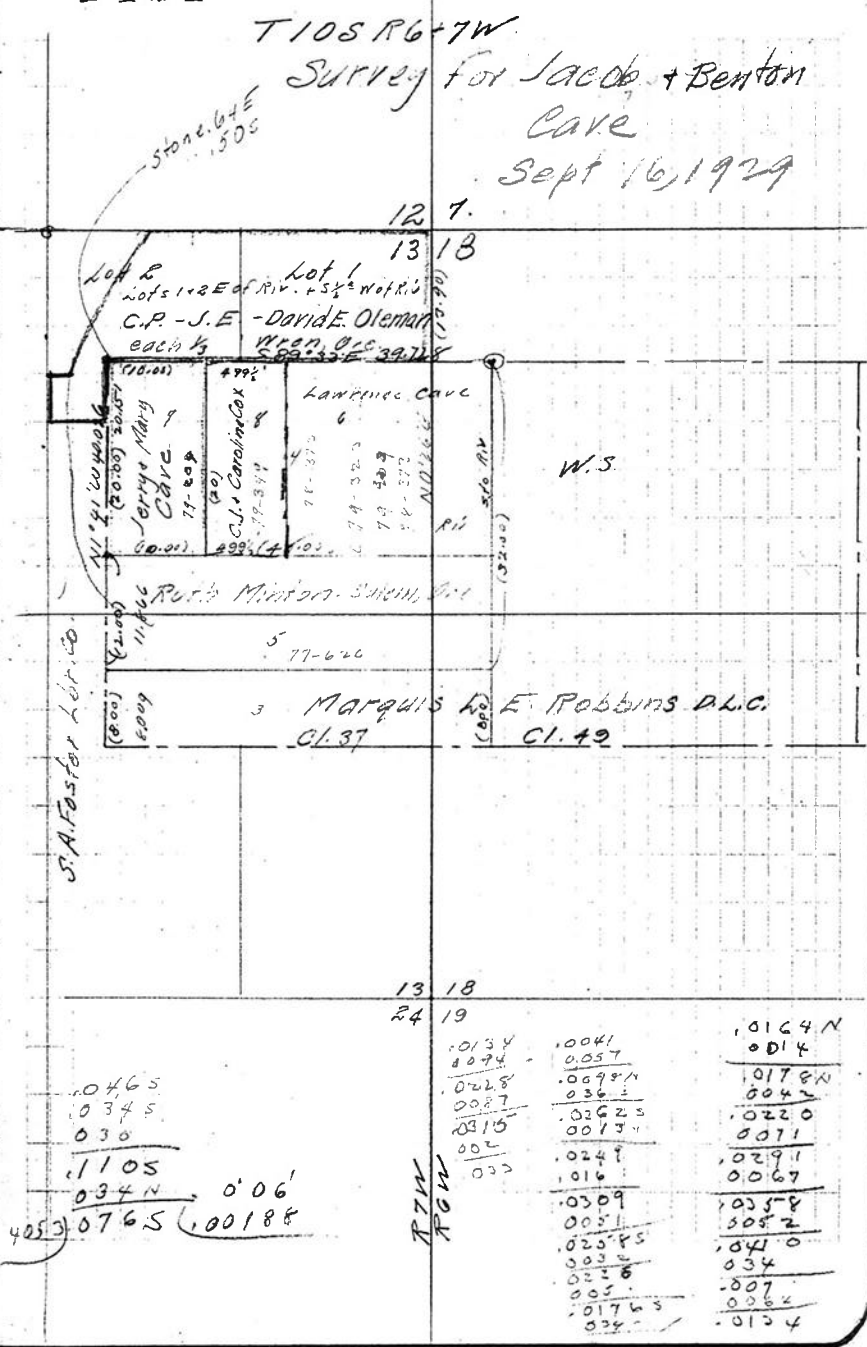
-7'20"	2.193	N89°54'E	
R.810		0°42'R	
3.056	3.056	St. 0.26N Stone 6'x6'x14"	
.720	7.20	(Face 4.8' stump N82°E .15)	.0465
	st. 0.031N	" " 60° snag S12°E .395	
-8'	2.752		st. 0.26N
R.779	1.724		
1.724		0°45A	.023N
R.655	R.655	0°0'	.034N
-9'	7.55	N89°54'E	.0165
R.280	R.225	Correct 50.06'	.0185
3.792	3.778	" East	.0225
3.562	3.562		.0295
		0°43R	.0365
R.751	R.751	0°0'	.0345
3.413	3.413	29.584	.0075
4.997	4.997		W. Rail .0135
4.645	4.645		.0235
1.305	1.305	39.226	.0315

hit .030 N of pipe for

1111

9

T10S R6-7W
Survey for Jacob + Benton
Cave
Sept 16, 1929



Lot 2
S 97C
L 65
#331

13 18		
24 19	.0134	.0041
	.0074	.0057
	.0228	.0698
	.0087	.0362
	.0315	.02625
	.002	.0013
	.002	.0249
	.033	.016
		.0309
		.0051
		.02585
		.003
		.028
		.005
		.01765
		.024
		.0124N
		.014
		.0178N
		.0042
		.0220
		.0071
		.0291
		.0067
		.0358
		.0052
		.0410
		.034
		.007
		.0062
		.0124

on W. P. R. R. W. Set
1" angle iron

at 15.805 ^{107° 25' L up RR.} N173W and 455' at Rt. ang
set 1 1/4" pipe

Tot at 17954 L
West

3.255	3.255
^{+24.120} 1.724	1.552
^{+18.145} 1.451	1.374
^{+7.020} R. 820	R. 797
.042	042
^{+11.0} 3.978	3.906
^{+10.329} 1.353	1.332
^{+7.150} 1.726	1.711
4.953	4.905
^{+11.0} R. 460	R. 417
1.520	1.512

20.874
23.291
~~24.803~~
~~24.858~~

^{-2.000} R. 828 2.825 North 0° 06' W
R. 767 R. 767
0.693 1676
^{-6.000} 3.363 3.363
1.176 1.168

10799

29.584
434
29.150

10725
89034
1731

15400
15805
3
47415

29.584	10799
4742	2020
24842	1.102
2324	1.992
1551	3.831
	4.965
	260

24803
434
24369

T ^{-10.45'} R. 0.70 = 2.020
^{-15.12'} 1.144 = 1.102
^{-20'} R. 120 = 1.992
0° 21' K

ret. 120 E
1026 E

^{-26.20'} 4.273 = 3.831
90° K 400
4.965
260

24119
24976
040
026
306
372

400
306
094W
026W
1120

.306 L to 1 1/4" pipe at
1/4 cor 13.12

(skip next two pages)

Cont'd on Pg. 13

Cont'd From Pg 10

Back to apt on NW
Jacob Cave
Set 2 1/2 x 2 1/2 dogwood stk
+ 0 60 W.

Face Fir Stump p34 "S 4° E .25
" " " 36" N 48° W .235
From stake as set run mt. 180 E
(South 0° 06' E 40,091)

1.628 1.628
1.287 1.884
2.700 2.661
2.382 2.382

1.955 1.947
1.810 1.770

3.613 3.443
hit 15.115

For Water Right

5.000 S 16° W
5000 + West to intake

24916
15115
54224
40091

170
170
170

Set 4" x 4" dogwood .028 E
48" Fir Snag North .10

2.382
1.947
1.770
3.443
9.542
7.160

306 E
094 W
026 W
060 W
028 W
022 W
180 W

151084
7.134
7.950
5.575
2.371

306 E
094 W
026 W
0120 W
060 W
180 W

460 W 306 E
026 W 022 E
060 W 053 E
028 W 381 E
022 W 160 E
3.24 541
3.81
0039 = 0.141