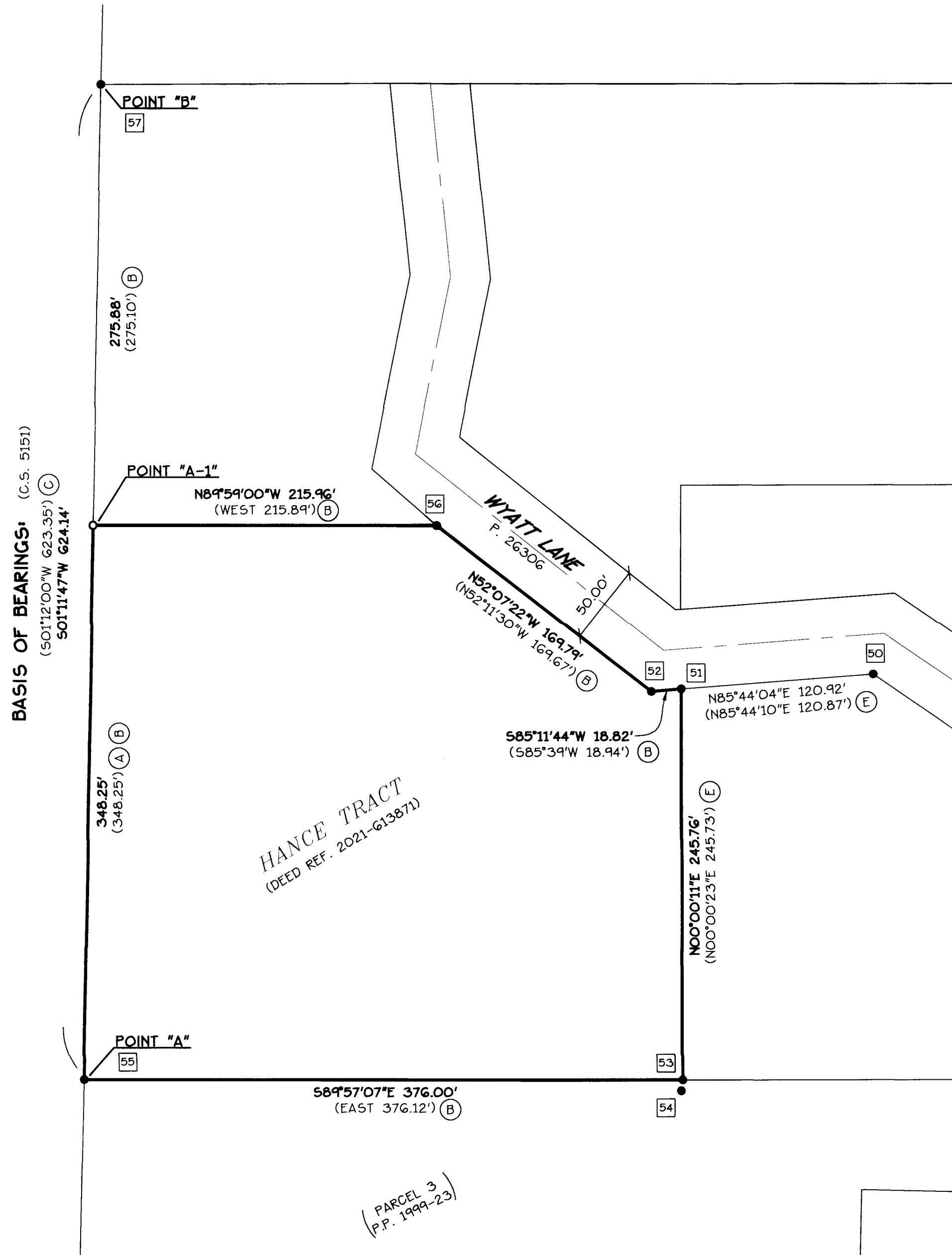


**LEGEND:**

- FOUND MONUMENT, AS NOTED; SEE "FOUND MONUMENT LIST"
- SET 5/8" X 30" ROD W/YPC MARKED: "K+D ENGR. LS 58561"
- ( ) RECORD DATA; SEE "RECORD REFERENCE LIST"
- I.R. IRON ROD
- YPC YELLOW PLASTIC CAP
- C.S. COUNTY SURVEY
- P.P. PARTITION PLAT
- 50 FOUND MONUMENT REFERENCE; SEE "FOUND MONUMENT LIST"
- A RECORD SURVEY REFERENCE; SEE "RECORD REFERENCE LIST"

BENTON COUNTY  
SURVEYOR'S OFFICE  
C.S. FILE No. 11125  
FILING DATE 4-3-23  
FILE SIZE 18x24

**RECORD OF SURVEY**  
FOR  
**DALTON + EMMA HANCE**  
LOCATED IN THE  
**NE 1/4 SEC. 2, T. 12 S., R. 6 W., W.M.**  
IN  
**BENTON COUNTY, OREGON**  
DECEMBER 19, 2022



**FOUND MONUMENT LIST:**

- 50 FOUND 5/8" I.R. (B)
- 51 FOUND 5/8" I.R. (B); HELD
- 52 FOUND 5/8" I.R. (B); HELD
- 53 FOUND 1/2" I.R. (C); HELD
- 54 FOUND 5/8" I.R.; NOT HELD;  
S07°08'55"W 6.86' OF TRUE CORNER
- 55 **POINT "A"**  
FOUND 5/8" I.R. (B); NW CORNER OF  
PARCEL 3 OF P.P. 1999-23; HELD
- 56 FOUND 5/8" I.R. (B); HELD
- 57 **POINT "B"**  
FOUND 5/8" I.R. (B); HELD

**NARRATIVE:**

**PURPOSE:**

THIS SURVEY WAS COMPLETED TO LOCATED EXISTING PROPERTY CORNER MONUMENTS AND TO SET ANY MISSING CORNERS OF THAT HANCE TRACT DESCRIBED BY DEED AS DOCUMENT NUMBER 2021-613871 RECORDED IN THE BENTON COUNTY, OREGON DEED RECORDS.

**BOUNDARY DETERMINATION:**

EXISTING MONUMENTS OF RECORD AND THE SET MONUMENT WERE HELD TO ESTABLISH THE BOUNDARY AS SHOWN ON THE MAP AND FURTHER DESCRIBED BELOW:

**POINT "A-1" (NW CORNER)**

POINT "A-1" WAS ON THE LINE ESTABLISHED BY POINT "A" AND POINT "B" AT THE RECORD DEED DISTANCE FROM POINT "A".

**FOUND MONUMENTS OF NOTE:**

FOUND MONUMENTS AT POINTS 50, 51, 52, 53 AND 56 ARE BELIEVED TO BE SET BY RICHARD FAIL IN C.S. 4736 OR C.S. 5151 EVEN THOUGH THOSE SURVEYS DO NOT SHOW MONUMENTS BEING SET AT THOSE POINTS, THIS DETERMINATION AGREES WITH C.S. 9462.

**RECORD REFERENCE LIST:**

- A C.S. DEED REFERENCE DOCUMENT NUMBER 2021-613871
- B C.S. 4736
- C C.S. 5151
- D P.P. 1999-23
- E C.S. 9462

REGISTERED  
PROFESSIONAL  
LAND SURVEYOR

OREGON  
JULY 9, 2002  
**JOE J. COTA**  
#58561LS

Renews: 12/31/23

Date: 4/3/2023 Time: 13:14  
Scale: 1=1(P5)  
File: dwg\2022\22-160\22-160\_rs.dwg (George)

**K & D ENGINEERING, Inc.**  
276 N.W. Hickory Street P.O. Box 725  
Albany, Oregon 97321  
(541) 928-2583