

NARRATIVE:

PURPOSE:

THE PURPOSE OF THIS SURVEY IS TO IDENTIFY EXISTING MONUMENTS LOCATED WITHIN THE LIMITS OF A CITY OF ALBANY IDENTIFIED CONSTRUCTION AREA AND DOCUMENT THEIR RELATIVE LOCATIONS PRIOR TO CONSTRUCTION.

SEARCH AREA:

ALL RECORDS OF SURVEY IN THE VICINITY OF THE CONSTRUCTION AREA WERE REVIEWED TO DETERMINE WHICH RECORD MONUMENTS MAY BE IMPACTED BY CONSTRUCTION. ALL CORNERS OF RECORD IN THE IMPACT AREA WERE SEARCHED FOR AND, IF FOUND, TIED AND DOCUMENTED BY THIS SURVEY.

BOUNDARY RESOLUTION:

NO BOUNDARY DETERMINATION WAS PERFORMED AS PART OF THIS SURVEY. MONUMENTS ARE SHOWN IN THE LOCATIONS THEY WERE RECOVERED AND WERE EVALUATED AS TO THEIR POSITIONS IN RELATION TO THE CONSTRUCTION CENTERLINE.

CONSTRUCTION CENTERLINE:

THE CONSTRUCTION CENTERLINE SHOWN ON THIS SURVEY WAS ESTABLISHED FOR A CITY OF ALBANY STREET IMPROVEMENT PROJECT.

COORDINATE SYSTEM / BASIS OF BEARINGS:

THE HORIZONTAL DATUM IS A LOCAL DATUM PLANE BASED ON THE PUBLISHED STATE PLAIN COORDINATES OF CITY OF ALBANY GPS POINTS #93626 AND 93627. GPS POINT 93626 WAS HELD AS THE TRANSLATION POINT AND THE GRID BEARING FROM 93626 TO 93627 OF NORTH 88°50'30" EAST WAS HELD AS THE BASIS OF BEARINGS

SURVEY CONTROL NOTE:

SURVEY CONTROL POINTS WERE SET THROUGHOUT THE PROJECT AREA AS SHOWN ON THE MAP AND LISTED IN THE "SURVEY CONTROL" POINT TABLE.

LEGEND:

- FOUND MONUMENT, AS NOTED; SEE "FOUND MONUMENT TABLE."
- (NOTE: ALL PIPE DIAMETERS ARE INSIDE MEASUREMENTS)
- △ K+D ENGINEERING CONTROL POINT, SEE "SURVEY CONTROL TABLE"
- CALCULATED POINT
- 550 FOUND MONUMENT REFERENCE, SEE "FOUND MONUMENT TABLE"
- 501 SURVEY CONTROL POINT REFERENCE, SEE "SURVEY CONTROL TABLE"
- (A) RECORD SURVEY REFERENCE, SEE "RECORD REFERENCE LIST"

- AC ALUMINUM CAP
- BD BRASS DISC
- C.R. COUNTY RECORD
- C.S. COUNTY SURVEY
- DRG DRAWING
- FD FOUND
- I.R. IRON ROD
- NC NO CAP
- RPC RED PLASTIC CAP
- YPC YELLOW PLASTIC CAP

RECORD REFERENCE LIST:

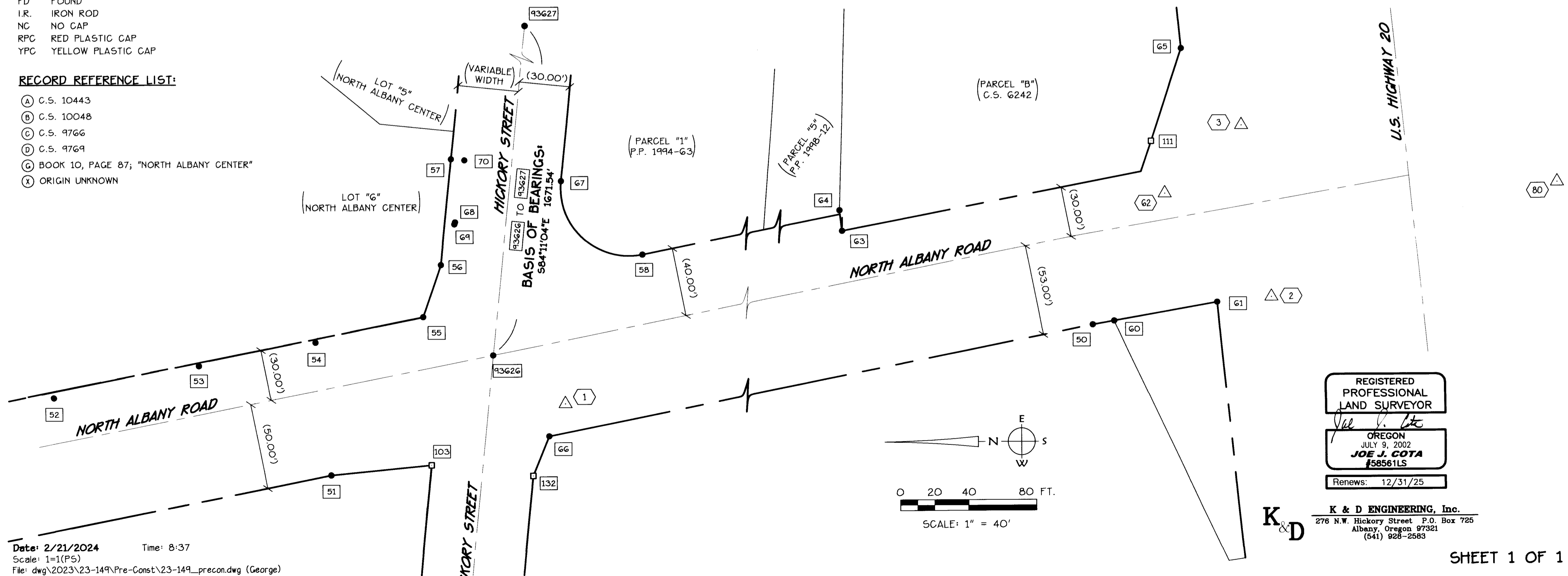
- (A) C.S. 10443
- (B) C.S. 10048
- (C) C.S. 9766
- (D) C.S. 9769
- (G) BOOK 10, PAGE 87; "NORTH ALBANY CENTER"
- (X) ORIGIN UNKNOWN

BENTON COUNTY
SURVEYOR'S OFFICE
C.S. FILE No. 11164
FILING DATE 2-22-24
FILE SIZE 18x24

PRE-CONSTRUCTION SURVEY
FOR
CITY OF ALBANY
NORTH ALBANY ROAD INTERSECTIONS
LOCATED IN
EAST 1/2 SEC. 1, T. 11 S., R. 4 W., W.M.
CITY OF ALBANY, BENTON COUNTY, OREGON
FEBRUARY 5, 2024

550 FOUND MONUMENT TABLE				
POINT #	DESCRIPTION	SOURCE	NORTHING	EASTING
50	FOUND 5/8" IR W/YPC STAMPED "K+D ENGR LS 1630"	(C)	366757.47	7522036.30
51	FOUND 5/8" IR W/YPC STAMPED "K+D ENGR LS 1630"	(C)	367493.84	7521892.94
52	FOUND PLUG W/TACK	(X)	367656.53	7521938.42
53	FOUND PLUG W/TACK	(X)	367571.20	7521957.09
54	FOUND PLUG W/OUT TACK	(X)	367502.56	7521970.71
55	FOUND 5/8" IR W/YPC STAMPED "K+D ENGR LS 1630"	(C)	367439.25	7521985.35
56	FOUND 5/8" IR W/RPC STAMPED "NORTHSTAR PLS 1823"	(B)	367428.71	7522015.75
57	FOUND 5/8" IR W/RPC STAMPED "NORTHSTAR PLS 1823"	(G)	367422.42	7522077.68
58	FOUND 5/8" IR W/YPC STAMPED "K+D ENGR LS 1630"	(C)	367310.30	7522021.23
60	FOUND 5/8" IR W/YPC STAMPED "K+D ENGR LS 58561"	(D)	366744.91	7522038.50
61	FOUND 5/8" IR W/YPC STAMPED "K+D ENGR LS 1630"	(C)	366684.40	7522049.30
63	FOUND 5/8" IR W/YPC STAMPED "K+D ENGR LS 1630"	(C)	366904.32	7522091.83
64	FOUND 5/8" IR W/YPC STAMPED "K+D ENGR LS 1630"	(C)	366905.79	7522103.99
65	FOUND 5/8" IR W/NC ; (STA: 1+16.57 95.31 RT) (STA: 1+16.35 95.35 RT)(F)	ODOT DRG 9B-3-16	366704.62	7522198.03
66	FOUND BRASS SCREW IN LEAD PLUG	(C)	367365.76	7521915.26
67	FOUND 5/8" IR W/YPC STAMPED "K+D ENGR LS 1630"	(C)	367357.80	7522064.58
68	FOUND 5/8" IR W/YPC STAMPED "K+D ENGR LS 1630"	(C)	367420.11	7522040.75
69	FOUND 5/8" IR W/RPC STAMPED "NORTHSTAR PLS 1823"	(G)	367420.54	7522039.54
70	FOUND MAG NAIL	(X)	367414.47	7522077.04
103	BRASS SCREW IN LEAD PLUG DESTROYED BY CONSTRUCTION ACTIVITIES	(C)	367434.93	7521988.59
111	5/8" IR W/RPC DESTROYED BY CONSTRUCTION ACTIVITIES	(C)	366722.64	7522143.84
132	5/8" IR W/RPC DESTROYED BY CONSTRUCTION ACTIVITIES	(C)	367375.22	7521892.09
93626	FOUND 5/8" IR W/2" ALUM. CAP STAMPED "CITY OF ALBANY GPS 93626 RESET"	(C)	367398.24 (367398.24)	7521962.92 (7521962.92)
93627	FOUND 5/8" IR W/2" ALUM. CAP IN MONUMENT BOX STAMPED "ALBANY GPS RESET 1996 93627"		367228.86 (367228.87)	7523625.94 (7523625.86)

501 SURVEY CONTROL TABLE				
POINT #	MONUMENT DESCRIPTION	SOURCE	NORTHING	EASTING
1	K+D CONTROL POINT, FD MAG NAIL	(A)	367356.03	7521934.21
2	K+D CONTROL POINT, SET HUB + TACK	N/A	366652.48	7522052.37
3	K+D CONTROL POINT, SET HUB + TACK	N/A	366669.68	7522153.02
62	K+D CONTROL POINT, FD MAG NAIL	(A)	366714.60	7522113.12
80	K+D CONTROL POINT, SET MAG NAIL	N/A	366431.15	7522129.42



Date: 2/21/2024 Time: 8:37
Scale: 1"=40'
File: dwg\2023\23-149\Pre-Const\23-149_precon.dwg (George)

REGISTERED
PROFESSIONAL
LAND SURVEYOR
Joe J. Cota
OREGON
JULY 9, 2002
JOE J. COTA
#58561LS
Renews: 12/31/25

K & D ENGINEERING, Inc.
276 N.W. Hickory Street P.O. Box 725
Albany, Oregon 97321
(541) 928-2583