

BOUNDARY AND EASEMENT MAP
FOR
BENTON COUNTY
OF
SW RESERVOIR AVENUE
COUNTY ROAD NO. 25321

LOCATED IN THE SE 1/4 OF SECTION 32 AND THE SW 1/4 OF SECTION 33
OF TOWNSHIP 11 SOUTH, RANGE 5 WEST, AND THE NE 1/4 OF SECTION 4
AND THE N 1/2 OF SECTION 5 OF 12 SOUTH, RANGE 5 WEST,
WILLAMETTE MERIDIAN, BENTON COUNTY, OREGON

DATE: SEPTEMBER 9, 2024

NARRATIVE

PURPOSE

THE PURPOSE OF THIS SURVEY IS TO MONUMENT THE ALIGNMENT OF THE NEW SW RESERVOIR ROAD COUNTY ROAD NO. 25321 AS DESCRIBED IN RIGHT OF WAY DEDICATION DOCUMENTS NUMBER 2004-367613 AND 2008-437636 AND SHOW FRANCHISE UTILITY EASEMENTS.

BASIS OF BEARINGS

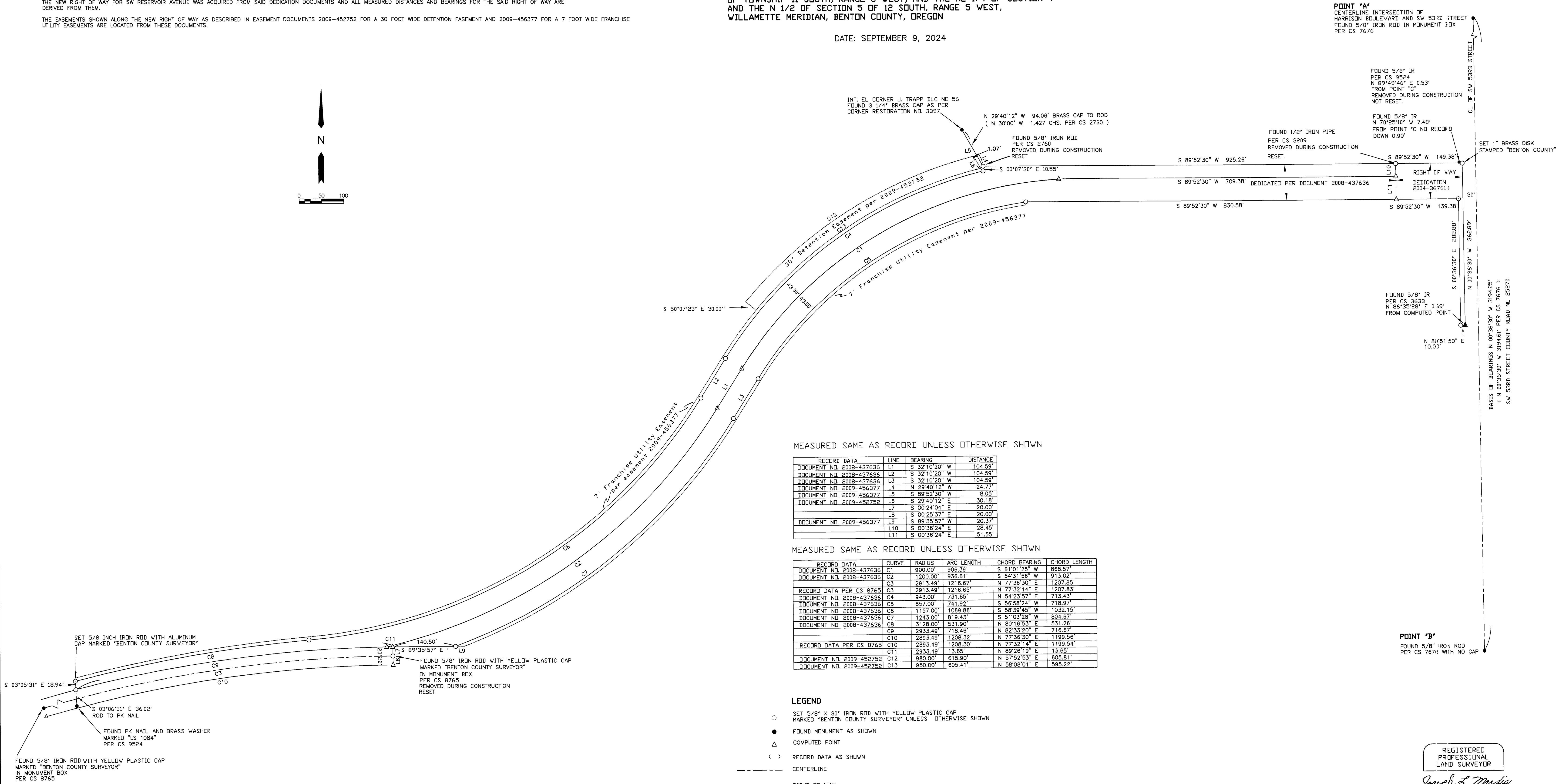
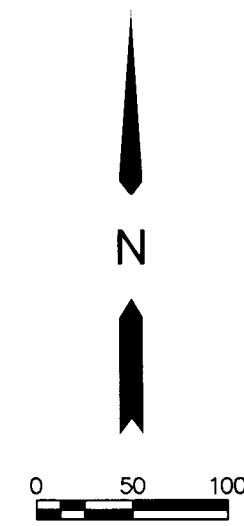
THE BASIS OF BEARINGS FOR THIS SURVEY WAS DETERMINED FROM POINT "A" THE FOUND 5/8" IRON ROD AT THE INTERSECTION OF SW 53RD STREET (COUNTY ROAD NO. 25270) AND HARRISON BOULEVARD (COUNTY ROAD NO. 15050) AND POINT "B" THE FOUND 5/8" IRON ROD IN THE CENTERLINE OF SW 53RD STREET THAT IS 30.00 FEET NORTHERLY OF THE CENTERLINE OF THE SOUTHERN PACIFIC RAILROAD PER COUNTY SURVEY 7676 AS SHOWN.

LINE DETERMINATION

THE NEW RIGHT OF WAY FOR SW RESERVOIR AVENUE WAS ACQUIRED FROM SAID DEDICATION DOCUMENTS AND ALL MEASURED DISTANCES AND BEARINGS FOR THE SAID RIGHT OF WAY ARE DERIVED FROM THEM.

THE EASEMENTS SHOWN ALONG THE NEW RIGHT OF WAY AS DESCRIBED IN EASEMENT DOCUMENTS 2009-452752 FOR A 30 FOOT WIDE DETENTION EASEMENT AND 2009-456377 FOR A 7 FOOT WIDE FRANCHISE UTILITY EASEMENTS ARE LOCATED FROM THESE DOCUMENTS.

POINT "A"
CENTERLINE INTERSECTION OF
HARRISON BOULEVARD AND SW 53RD STREET
FOUND 5/8" IRON ROD IN MONUMENT BOX
PER CS 7676



MEASURED SAME AS RECORD UNLESS OTHERWISE SHOWN

RECORD DATA	LINE	BEARING	DISTANCE
DOCUMENT NO. 2008-437636	L1	S 32°10'20" W	104.59'
DOCUMENT NO. 2008-437636	L2	S 32°10'20" W	104.59'
DOCUMENT NO. 2008-437636	L3	S 32°10'20" W	104.59'
DOCUMENT NO. 2009-456377	L4	N 29°40'12" W	24.77'
DOCUMENT NO. 2009-456377	L5	S 89°52'30" W	8.05'
DOCUMENT NO. 2009-452752	L6	S 29°40'12" E	30.18'
DOCUMENT NO. 2009-452752	L7	S 00°24'04" E	20.00'
DOCUMENT NO. 2009-456377	L8	S 00°25'37" E	20.00'
DOCUMENT NO. 2009-456377	L9	S 89°35'57" W	20.37'
DOCUMENT NO. 2009-456377	L10	S 00°36'24" E	28.45'
DOCUMENT NO. 2009-456377	L11	S 00°36'24" E	51.55'

MEASURED SAME AS RECORD UNLESS OTHERWISE SHOWN

RECORD DATA	CURVE	RADIUS	ARC LENGTH	CHORD BEARING	CHORD LENGTH
DOCUMENT NO. 2008-437636	C1	900.00'	906.39'	S 81°01'25" W	868.57'
DOCUMENT NO. 2008-437636	C2	1200.00'	936.61'	S 54°31'56" W	913.02'
DOCUMENT NO. 2008-437636	C3	2913.49'	1216.67'	N 77°36'30" E	1207.85'
RECORD DATA PER CS 8765	C3	2913.49'	1216.65'	N 77°32'14" E	1207.83'
DOCUMENT NO. 2008-437636	C4	943.00'	731.65'	N 54°23'57" E	713.43'
DOCUMENT NO. 2008-437636	C5	857.00'	741.92'	S 56°58'24" W	718.97'
DOCUMENT NO. 2008-437636	C6	1157.00'	1069.86'	S 58°39'45" W	1032.15'
DOCUMENT NO. 2008-437636	C7	1243.00'	819.43'	S 51°03'28" W	804.67'
DOCUMENT NO. 2008-437636	C8	3128.00'	531.90'	N 80°16'53" E	531.26'
DOCUMENT NO. 2008-437636	C9	2933.49'	718.46'	N 82°33'20" E	716.67'
DOCUMENT NO. 2008-437636	C10	2883.49'	1208.32'	N 77°36'30" E	1199.56'
RECORD DATA PER CS 8765	C10	2893.49'	1208.30'	N 77°32'14" E	1199.54'
DOCUMENT NO. 2008-437636	C11	2933.49'	13.65'	N 89°26'19" E	13.65'
DOCUMENT NO. 2009-452752	C12	980.00'	615.90'	N 57°52'53" E	605.81'
DOCUMENT NO. 2009-452752	C13	950.00'	605.41'	N 58°08'01" E	595.22'

LEGEND

- SET 5/8" X 30" IRON ROD WITH YELLOW PLASTIC CAP MARKED "BENTON COUNTY SURVEYOR" UNLESS OTHERWISE SHOWN
- FOUND MONUMENT AS SHOWN
- △ COMPUTED POINT
- () RECORD DATA AS SHOWN
- CENTERLINE
- RIGHT OF WAY
- - - - - EASEMENT

POINT "B"
FOUND 5/8" IRON ROD
PER CS 7676 WITH NO CAP

REGISTERED
PROFESSIONAL
LAND SURVEYOR

Joseph L. Nardis

OREGON
JULY 25, 1990
JOSEPH L. NARDIS
2459

EXPIRES 12/31/2024

BENTON COUNTY
PUBLIC WORKS
360 SW AVERY AVENUE
CERVALLIS, OREGON