

C.S. # 1120

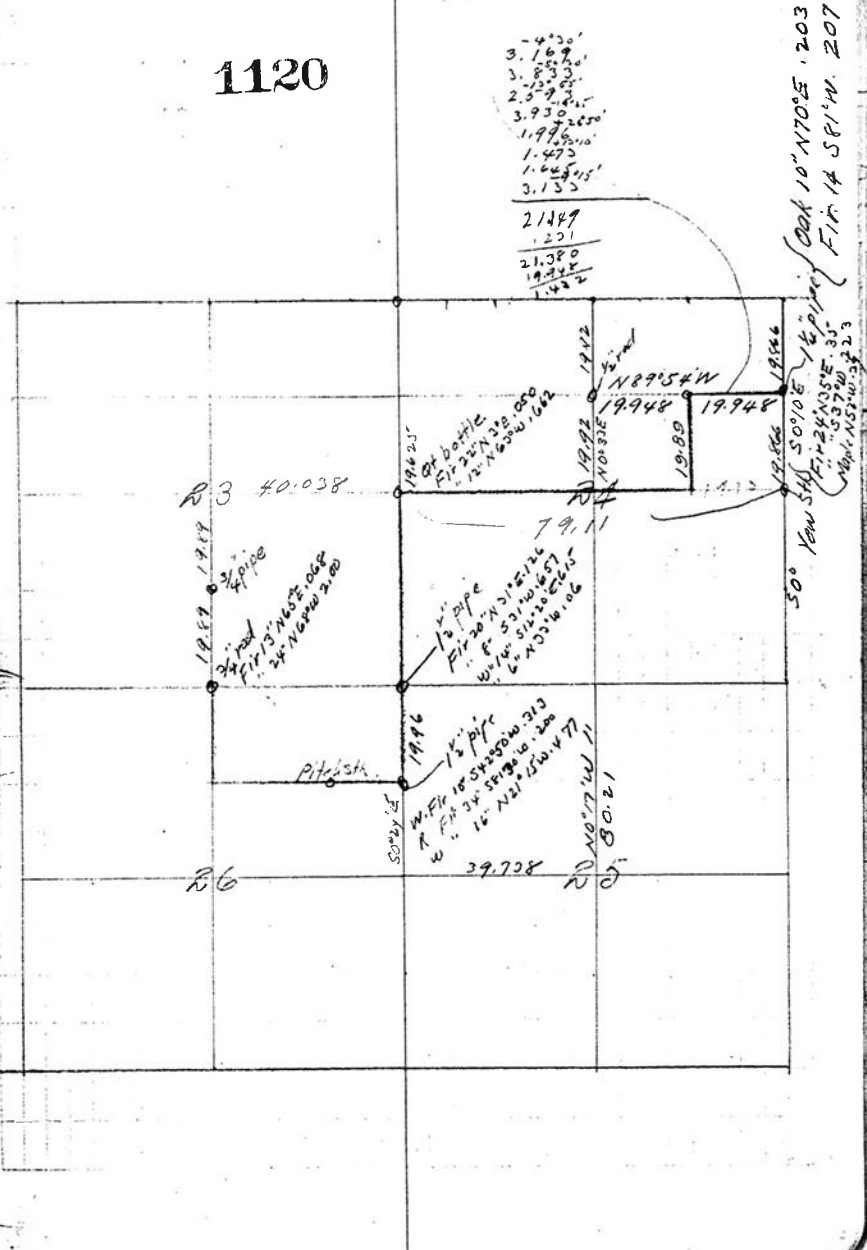
See notes in file

F.B. 43-1A

C.S. 51 or 354 or 253
 not platted
 Timber Survey for
 Bruce Miller
 T103 R6W

1120

-15°40'	4.860	4.680	N89°20E	.026 S	.020 S
-6°30'	2.664	2.648	0°51R	.039 S	.000
			0°0'	+1.60	Creek
	2.716	2.710	588°30E		.014 S
+17°30'	1.460	1.393	0°18L		.020 S
			N88°10E	.007 N	.029 S
+12°10'	3.420	3.345	0°43R		.015 S
			N87°30E		.007 S
+10°40'	4.952	4.867	1°13R	.042 S	.013 N
			19.643		.023 S
+5°	3.785	3.770	N88°E	.103 S	.002 N
			1°05L		.022 S
+24°10'	1.678	1.530	N87°45E	.072 N	.007 N
			3°0L		.111 S
+9°10'	1.673	1.651	N88°E	.080 N	.077 S
			0°18R		.110 S
+3°	4.945	4.940	N87½E	.009 S	.077 S
			1°08R		.038 S
+20°40'	4.908	4.594	1°35R	.097 S	.000
			"	.128 S	.070 N
+18°	2.355	2.237	589½E	.128 S	.109 N
			N87½E	.062 S	.114 N
		38.365			.062 N



3.169
 3.859
 2.079
 3.930
 1.976
 1.477
 1.645
 3.133
 2149
 1201
 21380
 1924
 142

50° New S.W. 50°10E 16.000
 51°24.50SE 35'
 52°10'W 23'
 53°10'W 23'
 54°10'W 23'
 55°10'W 23'
 56°10'W 23'
 57°10'W 23'
 58°10'W 23'
 59°10'W 23'
 60°10'W 23'

38.300				
-16"	2.144			1.143
	4.180	2.02R		4.071
	4.705			4.670
+15"	1.666			1.605
+4.10'	2.185	2.02R		2.185
	5.4.183			5.4.140
-7.20'	1.425	3.55R		1.425
	4.952	1.33R		4.842
	4.925	0.456		4.875
	3.208	0.05h		3.176
	3.615	0.40h		3.571
	1.220	3.0R		1.148
	3.485	1.26R		3.485
	2.242	2.30R		2.242
	1.070	2.14R		1.046

1.15411			
1.149			
1.150N			
1.151S			
1.152N			
1.153N			
1.154N			
1.155N			
1.156N			
1.157N			
1.158N			
1.159N			
1.160N			
1.161N			
1.162N			
1.163N			
1.164N			
1.165N			
1.166N			
1.167N			
1.168N			
1.169N			
1.170N			
1.171N			
1.172N			
1.173N			
1.174N			
1.175N			
1.176N			
1.177N			
1.178N			
1.179N			
1.180N			
1.181N			
1.182N			
1.183N			
1.184N			
1.185N			
1.186N			
1.187N			
1.188N			
1.189N			
1.190N			
1.191N			
1.192N			
1.193N			
1.194N			
1.195N			
1.196N			
1.197N			
1.198N			
1.199N			
1.200N			

1.196 N	
1.197 N	
1.198 N	
1.199 N	
1.200 N	
1.201 N	
1.202 N	
1.203 N	
1.204 N	
1.205 N	
1.206 N	
1.207 N	
1.208 N	
1.209 N	
1.210 N	
1.211 N	
1.212 N	
1.213 N	
1.214 N	
1.215 N	
1.216 N	
1.217 N	
1.218 N	
1.219 N	
1.220 N	
1.221 N	
1.222 N	
1.223 N	
1.224 N	
1.225 N	
1.226 N	
1.227 N	
1.228 N	
1.229 N	
1.230 N	
1.231 N	
1.232 N	
1.233 N	
1.234 N	
1.235 N	
1.236 N	
1.237 N	
1.238 N	
1.239 N	
1.240 N	
1.241 N	
1.242 N	
1.243 N	
1.244 N	
1.245 N	
1.246 N	
1.247 N	
1.248 N	
1.249 N	
1.250 N	

1.620
 1.249
 79.011
 431
 00543
 0042
 457
 44
 41.35
 81.25
 1225
 1123
 0775
 375
 1123
 19.66
 15.15
 1.10

-28°
4.960 4296

90°14'N

-30°
4.960 4296
1.770 1.770

3°04'N

+13°20'
2.760 2.683

1°49'N

+27°10'
2.270 2.017

1°21'N

+27°20'
3.300 2.927

0°54'N

+30°20'
2.930 2.524

18.08 0

1°23'N

20.60 4

-71.0

19.89 4

hit 520 E of cor.

.039W

.230E .307W

.045E

.418W

.085E .527W

.047E .592W

.047W 571

.061W

230

045

045

287

.457

.108

.349

525

20.176

.0088

.037E

.038E

230E

.207E

01.6E

095E

.48E

024

085

.527E

018

047E

.592E

026E

.618E

047

.571E

022

593

061

.83E

990	2.990			068W
970	4.936			159W
876	6.666			217W
002	5.770			266W
		1°17K		
108	1.486			279W
		1°35K		
505	1.500			267W
		0°30L		331W
2.00	1.466			399W
2.070	2.070			600W
		1°17L		
4.870	4.850			109E
		0°24R		
2.162	2.143			015W
		0°24R		623W
1.000	.880			006W
2.97	2.874			634W
		0°04L		667W
4.315	4.182			749W
		35°08R		
1.375				770W
1.338	1.095			
		20°060		

.0355 E
 023 W
 .0125 E
 0555
 0680
 0915
 1595
 0622
 2117
 0710
 2257
 266
 3141
 330
 0127
 1118
 2067
 097
 2167
 0363
 3030
 024
 331
 0325
 030
 3975
 090
 109
 5985
 0377
 6382
 015
 6232
 0166
 6394
 006
 6334
 053
 6864
 020
 6664
 077.6
 005
 1749
 0202
 7696
 7706

E	W
022	023
030	038
109	040
005	015
	006
11	770
	712
	114
3770	110

2178

+9°
1.765

0°30'R

0°39'R

4.030

3.460

5.000

3.94

18.17

T87

20.06

+8°20'
3.250

3.215

90°R

+6°40'
4.990

4.960

0°20'R

~~.019N~~

+6°
3.226

3.208

0°45'R

.029N

-5°
2.030

2.018

0°0'

.038N

-11°20'
3.640

3.568

1°08'W

-18°01'
2.230

2.119

+18°
1.900

1.810

1.000

1.000

0°06'W

.0975

-12°
4.80

4.675

0°34'R

.0088

1.770^{40'}

1.083

0°11'W

.011N

2.747^{30'}

2.747

30.403

.0095

30 7 1 30 4 1

1.182

¹¹⁵⁰ 4.420

²¹¹⁰ 1.320

¹²⁹⁰ 3.125

4.104

1.166

2.732

0.000

0.111

31.211

1.00L

39.943

0.000N

0.020N

0875

90°03R - 0.000

4.320 4.320

^{+18°20'} 4.910

^{+14°} 1.520

^{+10°} 4.720

^{+4°} 3.550

4.660

1485

4.846

3.541

0°45L

0°37L

1°5L

2°25R

2°20L

1.617

hit 20.409 323 w/er

N	
0.24	0.97
0.38	0.38
0.11	0.27
0.26	0.81
0.20	
<hr/>	
1.04	2.01
	1.00
	<hr/>
	0.97

469