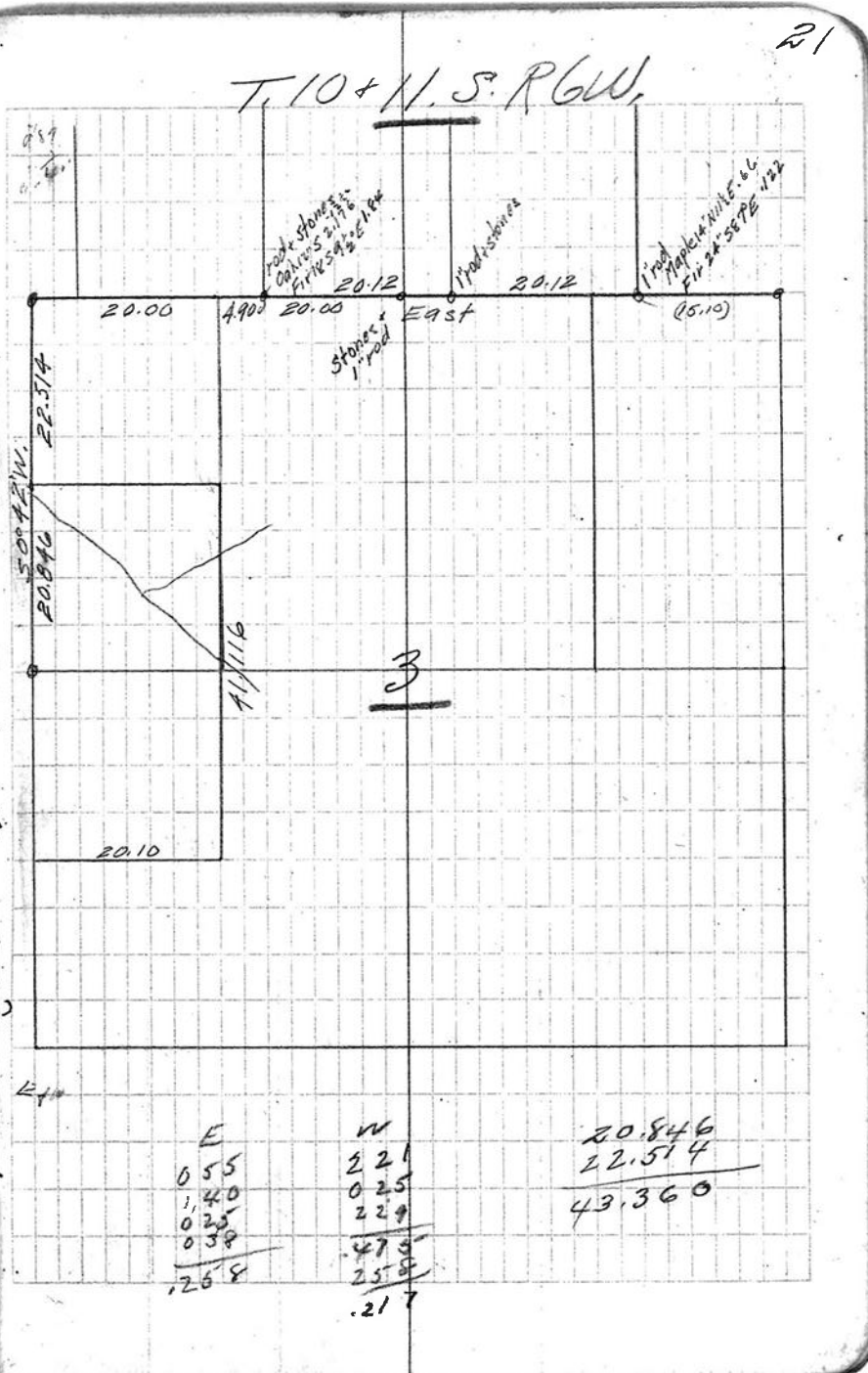


C.S. # 1123

See notes in file

F.B. 43-21

CS. 220			
112R			
^{+8L} 5.000	4.945	West	
⁻²⁰ 4.748	4.443	90° 40' R intang	
⁺⁷⁰ 4.792	4.757	50° 40' W	
^{+120 40} 8.730	2.665	4° 46' R	
⁺⁶²⁰ 3.606	3.582	0° 53' L	
^{+100 30} 2.595	2.551	3° 10' L	
⁺²⁰ 4.880	4.880	0° 0'	
⁺³²⁰ 2.436	2.431	0° 0'	
⁻³⁰ 3.110	3.105	0° 0'	
⁻¹⁹⁰ 3.170	3.073	0° 29' L	
⁻²⁰ 2.157	2.044	0° 43' R	
⁻²⁷⁰ 5.000	4.455	0° 23' L	
⁺¹⁶ 1.360	1.308	42° 33' R	
^{+25 30} 3.105	2.894	39.294	
	42.188	42.188	



3.583 3.583
 -90
 1.050 1.038
 -14 1/2
 3.025 2.931
 +22 20
 1.503 1.392

-1.0 2 cr.

+130
 2.000 1.948

0°59'R

+7 1/2
 2.975 2.948

1°30'R

+13 1/2
 2.495 2.425

1°0'R

+140
 2.140 2.077

11°40'R

+30
 1.923 1.558

35°53'R

19.856

Exp Jac 3 → Set Stone 8" x 10" x 14" +
 Fir 14" S71°E .13 std dead
 " 10" N56°W .42 std
 " 30" S47°E .06

+90
 2.190
 +30
 4.953

89°15' L = 00

3.960
 2.390

0°18'R

Rh

42.188
 1.707
 43.895

.0174
 20

.0174

.0248

50°40'

20.05 0°16'
 19.85 0°45'
 43.89 20
 19.556 810.21
 24440 1923
 1623063
 729189
 21021

58614

1923

175242

117228

5275.26

58614

112715

.0262
 3
 0786

170

20

700

20

20

424

20
 20
 40
 424

19.856

217

19.639

39.294

2.894

1.707

43.895

50°40'W
 32
 S87°12'W

4389

20.05

19.64

0°32'

.41093

39501

14990

2.287
3.710

o

0°23'2

2°52' R N 1°20' E

23