

C.S. # 1146

Hardcopy 13-7#3

also see notes in file

F. B. 74-2

1146

C.S. 108 Cont Nov 6, 7, 8

Amplitude 1930

Set on pt. 40 N. of NE Cor CI 38

16.398 16.398 W. 400N
 4.060 4.049 pt. on Hwy

0.466 Correct 0° 20' N

2.650 2.647 " .0355 .2285

2.116 2.114 " .0283 .1885

3.742 3.738 28.976 .0505 .1165

2.084 2.059 31.005 .1365 .134

373 347 158° 35' L 0.30N .134

Set = 4.36 S

Fir 20" 364° W .630 .611

" 46" 314° W 1.242 1.191

Set on pt. 0.25 W of A by Hwy

77° 59' L 4.2195 1.892 W

85° 1/4 L Hwy Bear = 54° 56' W

30 .60

75.000

16.008

5.110

8.50

" hit .094 E of Hwy PC.

" = 55.4005 4620 W

" 15.952 1.330 W

1° 05' R .096 N 5.110 W

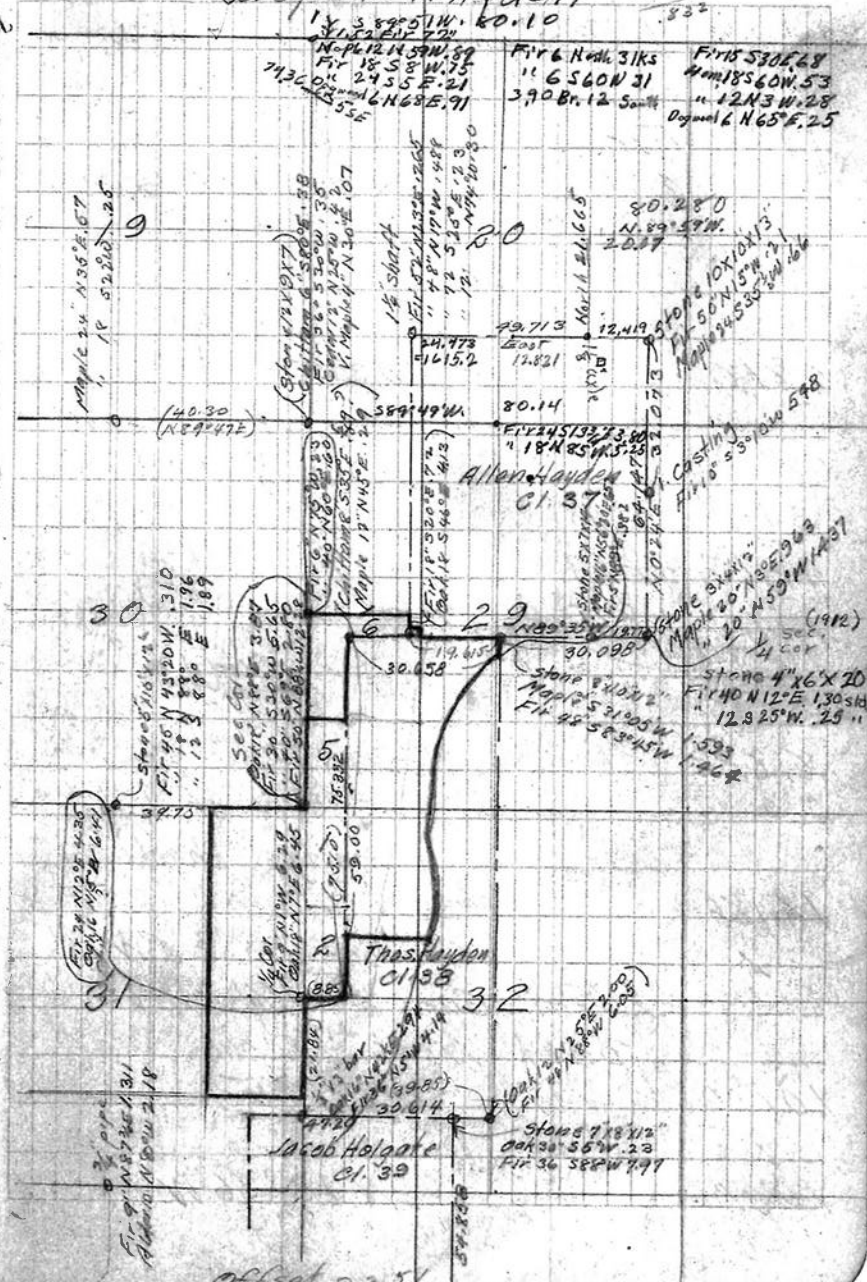
1° 51' L .076 S 2.364 W

Jasper Hayden

20.447

19.615

.832



Found stone
 Set 3/4" pipe and stone
 8" x 8" x 14" on top
 Fir (24' gov) 48" (N12°E Gov) (4.35) sbd
 Oak (16' 20") (N5°W) NR°W 6.41 sbd

6.810 6.810 90°03' E
 NO°03'E
 pt by fence
 running 0.14 = 583.34

3.190 3.190
 4.475 4.457
 1.875 1.875
 NO°03'E
 set cor. 116 S
 16.33 20' N of
 16.20 1/2" pipe

8.822
 East
 -385 N. of hub
 angle checks

14.186
 + .60 E Riv
 Set car headlight 116 S
 Back West 4.186 chs
 N42°E

10.000
 12.00
 160
 N13°36'W

	1955 1710	1963 1765
31.005	4.00N	0.35 S
34.7	0.30N	0.28
30.658	4.30	0.50
	249	1.36
30.658	1.81	2.49
16.398		4.50
0.25		1.078
16.423	4.219	30.658
	-302	16.423
	3.917	14.835 E
1.998W	0.96N	
4.620W	0.76S	
1.330W	0.50N	
5.110W	1.36N	4.2195
2.366W	0.30S	2.19N
14.324W	15.952	4.000 S
14.235E	75.269	55.400 S
	0.20	15.952 S
0.089W	75.249	75.352 S
	= 0°04' W	0.80 N
	0.0018	
75.249	0.89W	75.3325
	N0°03'E	59
		16.332
		14.457
	N37°E 1.00 E Riv continue	N37°E 1.00
	Oak 14" N8°W .202	
	Maple 14" N28°E .366	
	510°E 3.60 E R	N60°E 2.604

E. 2.40 E Riv

3.40
 9.450
 5.000
 5.000
 10.00
 5.000
 3.007
 9.087
 5.54
 5.00+-

E. 370 $\frac{1}{2}$ Riv.
 North
 " 3.10 E to $\frac{1}{2}$ Riv.
 " 3.00 to $\frac{1}{2}$ Riv.
 N 3° 13' E
 N 48° 5.50 $\frac{1}{2}$ Riv.
 N 21° 53' W
 hub on $\frac{1}{2}$ Riv.
 E.
 Beg. pt.
 Back to cl. on $\frac{1}{2}$ Riv.
 S. to $\frac{1}{2}$ Riv.
 W to $\frac{1}{2}$ Riv.

G.W. Cor. Allen Hayden Ch. 37
 on N line Ch. 38 19.615 W. of N.E. corner
 stone 88" x 18"
 S.W. Cor Hse N 41° W - - - 444
 S.E. Cor Hse N 19° E - - - 344

400	100
121	27
<hr/>	<hr/>
279	1276
156	177
<hr/>	<hr/>
2634	69
035	17
<hr/>	<hr/>
2284	303
0125	
<hr/>	
2159	
028	
<hr/>	
1879	
0221	
<hr/>	
1658	
050	
<hr/>	
1158	
121	
<hr/>	
1037	
030	
<hr/>	
1307	
010	
<hr/>	
132	
136	

5

Set on point 16.398 W of
NE cor Cl. 38
12.00 south from cline

10.242

+ 1.40 ± Riv

Set $\frac{3}{4}$ " rod
Oak 30" N54°E .475

1.634

West
 $\frac{3}{4}$ " pipe on E line Hwy

9.000

South

3.312

W. to W line Hwy R. W

5

28

28

20.26

34.0 / 44
67.2
27.92

3.312
16.398

19.710
30.058

10.948

11
66

726

34

3.4