

C.S. # 1152

Hardcopy 12-5 #18

also see notes in file

F. B. 59-14



12-5

Book 59

85+21/12/17

~~110~~ Survey for M.M. Long, Whiteside
C.S. 166

Began at pipe on Cl. line A

12.636

S.

3.396 S of Bad angle.

14.24

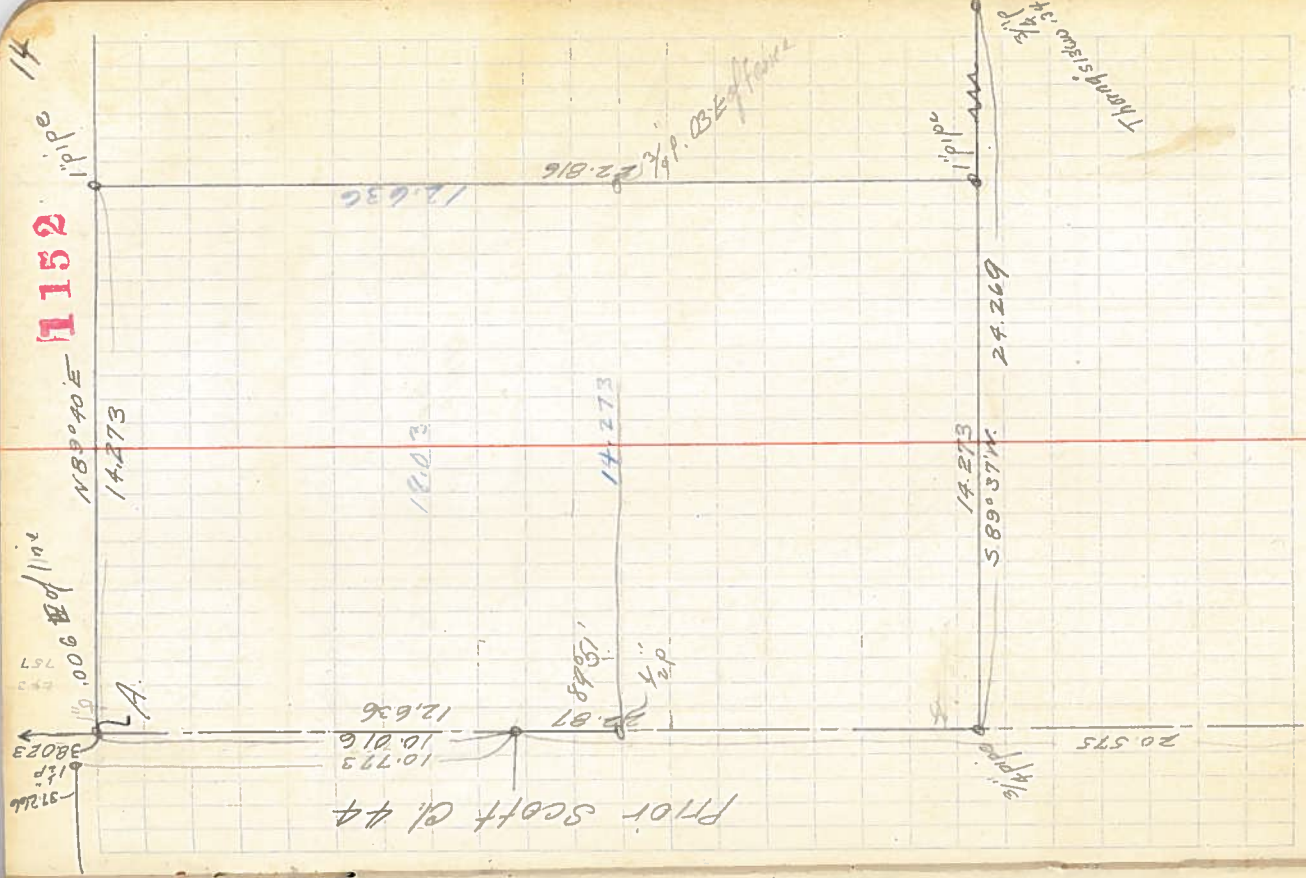
E.

Set .011N

12.647

N. hit pipe

12.636
14.273
379.08
584.52
252.72
508.44
1263.6
18.035



1152

pipe

14

Thompson's line 34 2/3

Prior Scott Cl. 44