

C.S. # 1167

Hardcopy 14-8#2

also see notes in file

F. B. 75-2

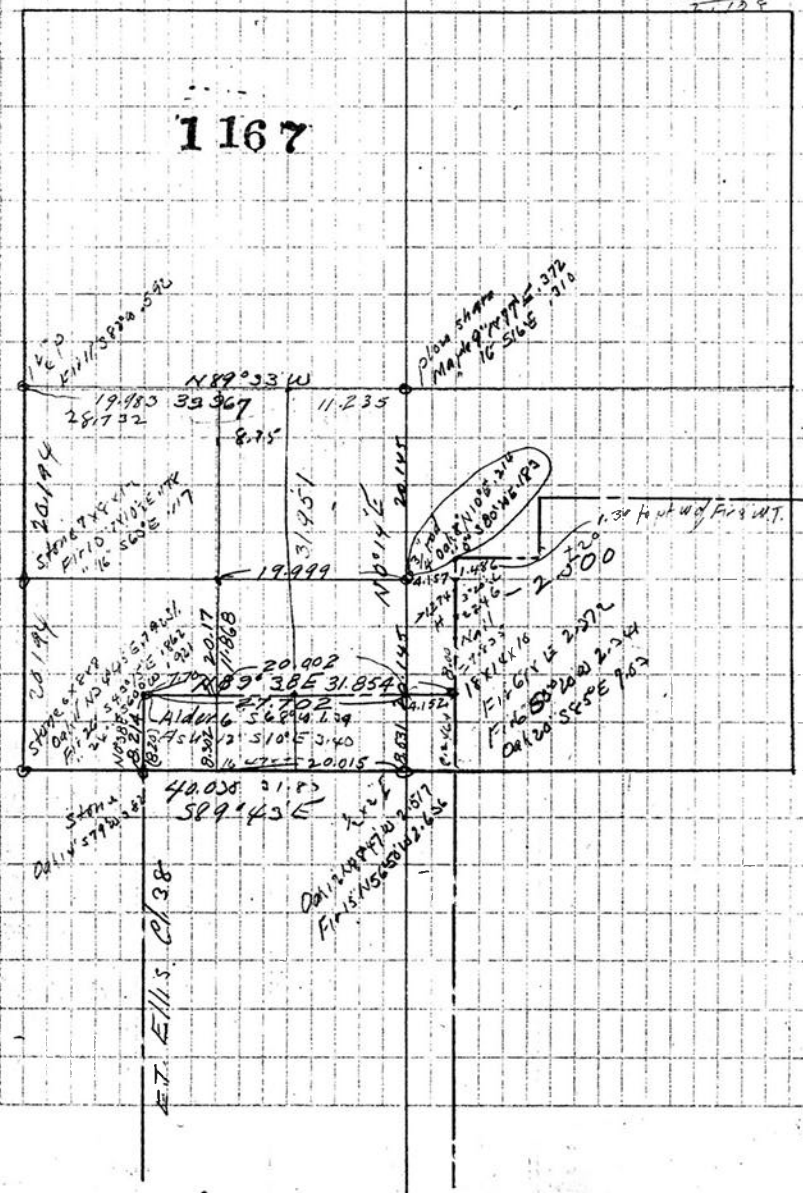
FB #75

Sept 26/1931
 Survey for Robinson + Anna B.
 Began at N.E. Cor. B.N. Longworth
 Cl. 37

4.480 ⁺⁷⁰ 3.787 ⁻⁷⁵	4.446 3.768	N0°38'E Set 3/4 bolt Oak 3" N70W .050 5" N17°E .094	0
4.830 5.000 ⁻⁷ 3.250 ⁻⁴⁰	4.830 4.963 3.842	+ 2.87 and .126 N. Cor 589°36'E Correct N0°56' = N89°38'E 5 5/8" bolt	.079 N .160 ^X 263 N
3.580 ⁻¹⁵ .350	3.405 .350	0°07'L 16' Fence	213 N 266 N
2.942 ^{-6 1/2}	2.923	0°04'R 0°0'	.008 N .317 N
3.695 ^{-20 20} 4.120 D	3.465 4.120	27.298 90°R 1.220 90°L	44 2/10 1.2205
4.566 s	4.556	31.854 91°27'R (90°18'L)	1.736 N hit .009 W of Cor x 120 0°07'L 17°15'
2.995		Back to D B.S.W	
8.082		86°48'R 93°33'R to Oak W of tree	

GORMAN 'T. P.S. R.S.W. 75
 100

9.793
7.700
2.093
7.128



Begin at 1/4 CW 4.3

^{+5°}
R. 225 2.216

1°20L

E
East .051N

^{+6°}
R. 681 2.663

0°0'

^{+16°}
1.317 1.265

^{+25°}
1.926 1.766

^{+27°20'}
R. 485 2.201

^{+16°}
3.770 3.623

^{+14°20'}
R. 574 2.560

.854 .851

17.151

R. 832 2.832

19.983

1 1/2" pipe

W Fir 8" 543°E .142

Maple 14" North .720

90°20'R = 108K

1.957 1.957

^{+20°}
3.702 3.077

71°22'R 5/8" 60.091E = 114W

^{+4°}
R. 130 2.124

.184W

^{+3°}
R. 253 2.248

.134W

2.486 2.486

.145W

4.890 4.880

3°26L

.167W

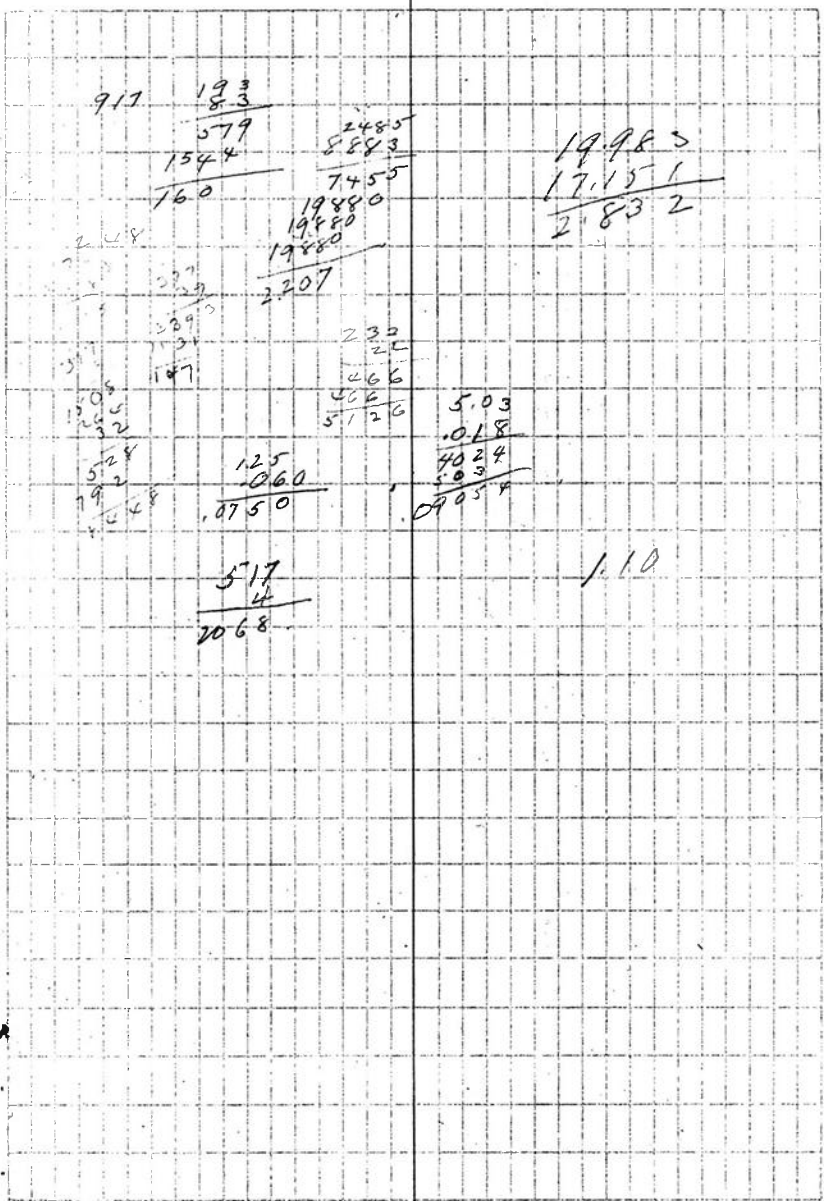
^{+3°}
1.278 1.246

.075E .247W

^{+18°16'}
3.977 3.770

0°0'

21.788



-30	21.788	0°09'2	Set .960N x .260W
4.920	4.913		5/8" bolt
1.000	.930		First 580'W .280
2.200	2.178		1/36' 5.62°E .08
-50	3.013	0°0'	.081W .280W

32.822
 89°09' N line E
 hit .295 E of hub
 which is .126 S. of col

2 day
 3 hrs.
 Mileage

20.00
3.75
10.00
33.75
16.87
10.
6.87
23.74

075

0.91E	0.21W
0.75E	2.95W
.166	316
	166
32.822	.150W

00456 = 0°16'

320

0089	30.145	
0141	20.194	
0230	30.339	8.531
091	20.17	8.214 = 0°39'
114	8.302	27.762
0096	11.868	3.17
1236		96
102		86
1338	8.021	0.88
113	3.013	8.214
1451	11.034	8.302
223	-126	
1674	10.908	32.822
31	11.868	20.126
075	.960	32.696
2475		8.302
172	40.388	40.998
2647	40.290	40.339
364	180.678	.659
3011	40.339	
21		
2801		
137		
2938		