

C.S. # 1170

Hardcopy 12-5 #34

also see notes in file

F. B. 60-8

FB#60 Pgs. 8-10

C.S. 195 - 66 Continued  
Survey of Crystal Lake Cemetery

Beg. at S.E. cor. of Cemetery near  
Hop house on Seavy Place in

J.C. Alexander D.M.C. T12-5

Measured S 85° 08' W. 1.733 <sup>1.745</sup> found by P.

From Beg. N 11° 56' W. 1.330 <sup>3/4" pipe</sup>

2 N 5° 30' E 1.050 <sup>3/4" pipe</sup>

3 N 19° 09' W. 1.770 <sup>3/4" pipe</sup>

4 N 6° 49' W. 6.328 <sup>3/4" pipe</sup>

At (N. 68° 23' W. 6.228) 1.733 <sup>1.745</sup> W. of line

Right 80° 48' - 29° 45' 1.022 = 587.006

Center of Concrete 30" wall in Slough

5 N. 10° 35' W. 2.894 <sup>3/4" pipe</sup>

6 N. 28° 36' W. 3.6034 <sup>offset .501</sup>

7 (N. 29° 02' W. 7.502) 3.959 <sup>N. 445</sup>

Fix 24" S 55° W. .080 <sup>to fence</sup>

Oak 6" S 29° 30' E .270

Int. 55° 42' 2"

8 S 33° 33 1/2' W. 5.8504 <sup>to rd in road</sup>

Correction N. 43' 14" <sup>to line 33° 54'</sup>

(N. 33° 47' W. 5.541)

Δ 8 is S. 267 <sup>338</sup>

9 S 0° 09 1/2' E. 6.795 <sup>to line 33° 54'</sup>

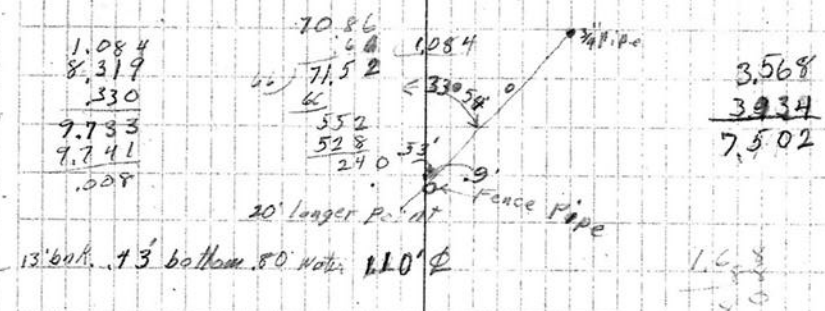
10 (S. 0° 20' E. 15.259) 8.319 <sup>122</sup>

corner E. 210 <sup>1.210</sup>

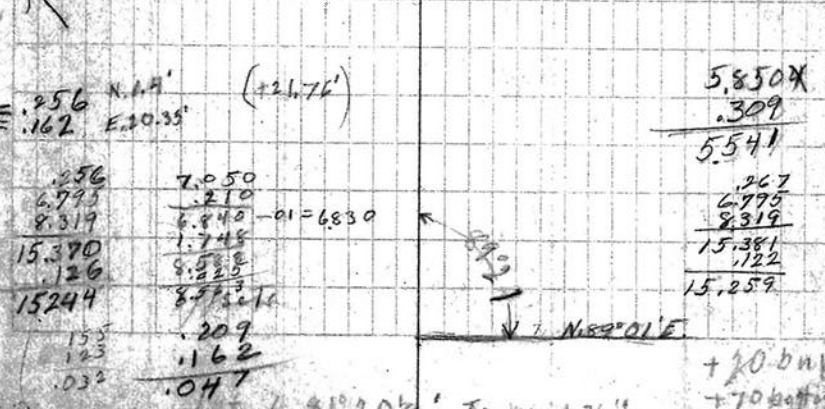
N. 119

1170 8

Oct. 12, 1931 Columbus Day



13' bank 13' bottom 80 notes 110° 0' 1.68  
Cem Slough 1.23 bottom bank 80  
From Δ 157 2. of S.E. cor  
Set L. 1.040  
from Δ 153 L. 14° 58'  
Back L 9° 41' -  
" L 86° 33 1/2' 2nd "  
" L 80° 24' 3rd "  
At 3rd from 1 to 2 9° 08 1/2'  
" " 2 to 047 W. of 4 12° 20'  
correction 26'



+ 20' bank  
+ 70' bottom  
+ 125'

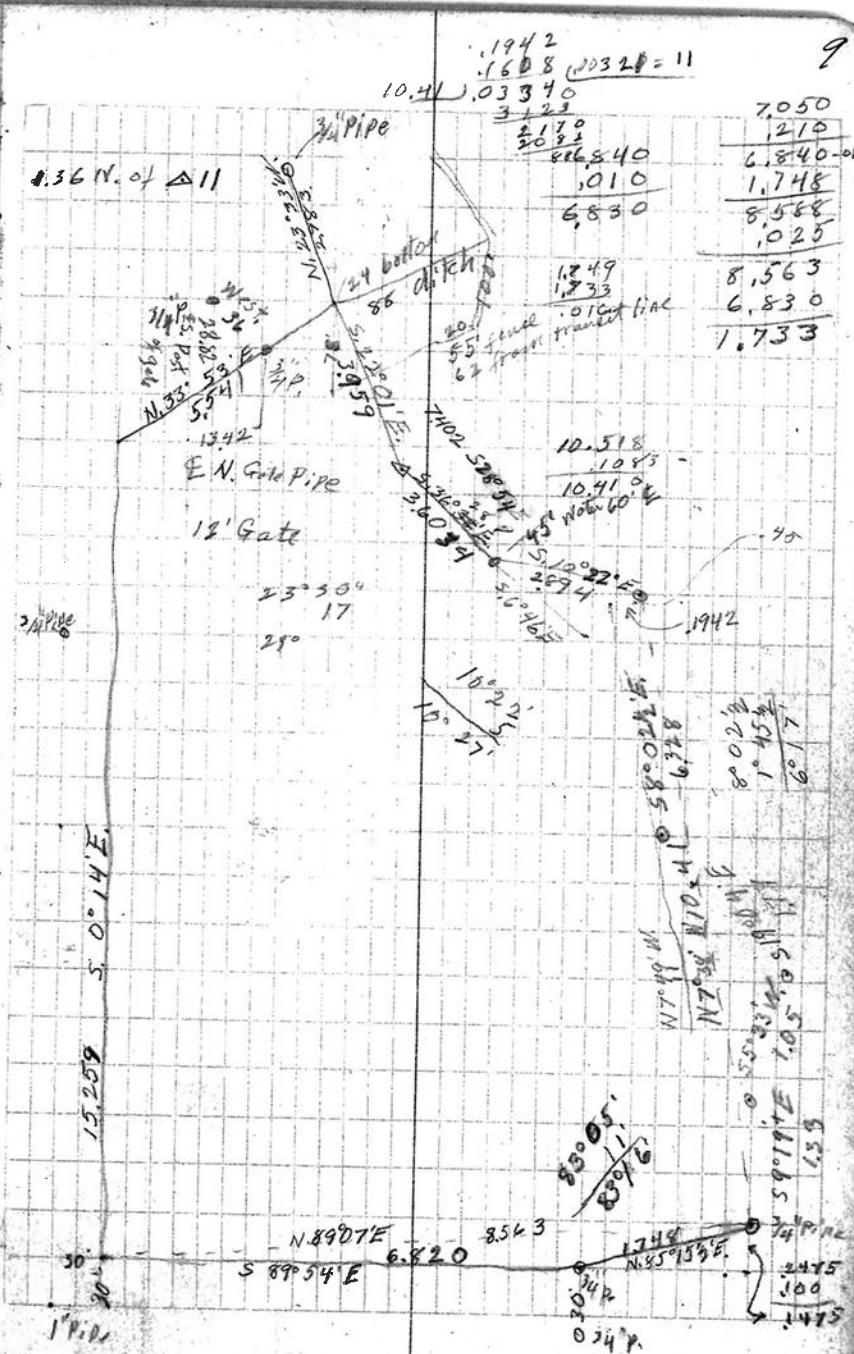
11	N. 89° 15' E	Int. L 89° 22'	2.050	
	correction N. 12 1/2'	(N. 89° 01' E	- .010	10 3/4" Pipe
		8.563)	.148	15 N. & 10 1/2 S
	Striking S. of 3/4" Pipe		1.748	To 3/4" pipe
12		Continuing	.157	
	Int. L 80° 47'		.040	+ 20 tank + 70 bottom + 1.25 Water
	Int. L 81° 20' 1/2	continued		next To 3/4" pipe To second 3/4" pipe To third 3/4" pipe
	Int. L 79° 48'			
	" L 86° 33' 1/2			
	" L 80° 24'			

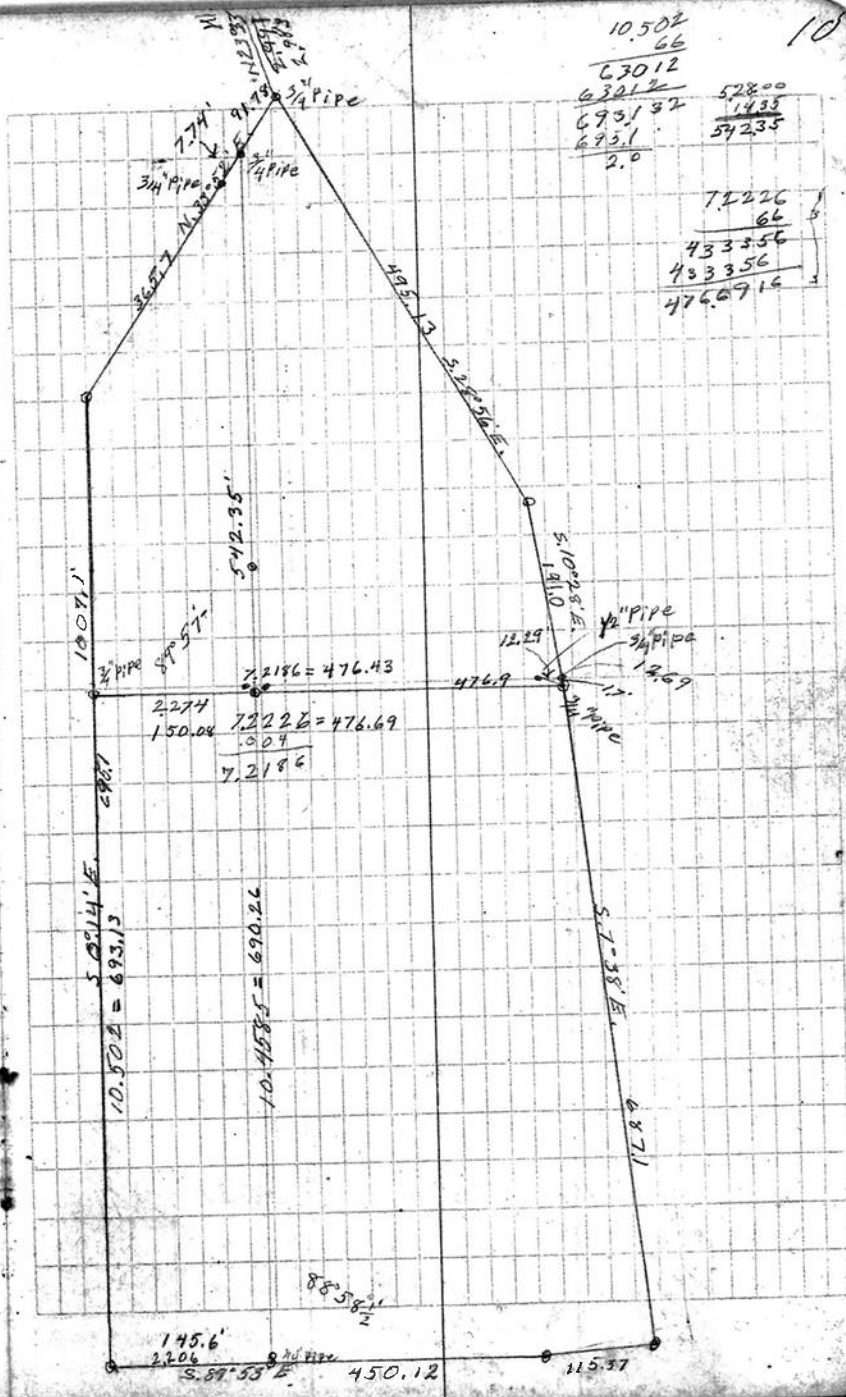
9.268  
- .014  
-----  
9.254

8.319  
- .157  
-----  
8.162

4.343  
- .130  
-----  
4.055  
first pipe

7.900  
- .090  
-----  
7.810  
1.266  
-----  
6.794  
15.258





10.502  
66  
63012  
63012  
693132  
6931  
2.0

75226  
66  
433556  
43356  
4766716

1001.1'  
1001.1'  
2.274  
150.04  
0.07  
7.2186

7.2186 = 476.43  
7.2228 = 476.69  
7.2186

12.29  
476.9  
12.29  
12.29

5.0914'E.  
10.502 = 693.13

10.4585 = 690.26

145.6'  
2.206  
S. 89° 53' E.  
450.12

115.37

10