

C.S. # 1216

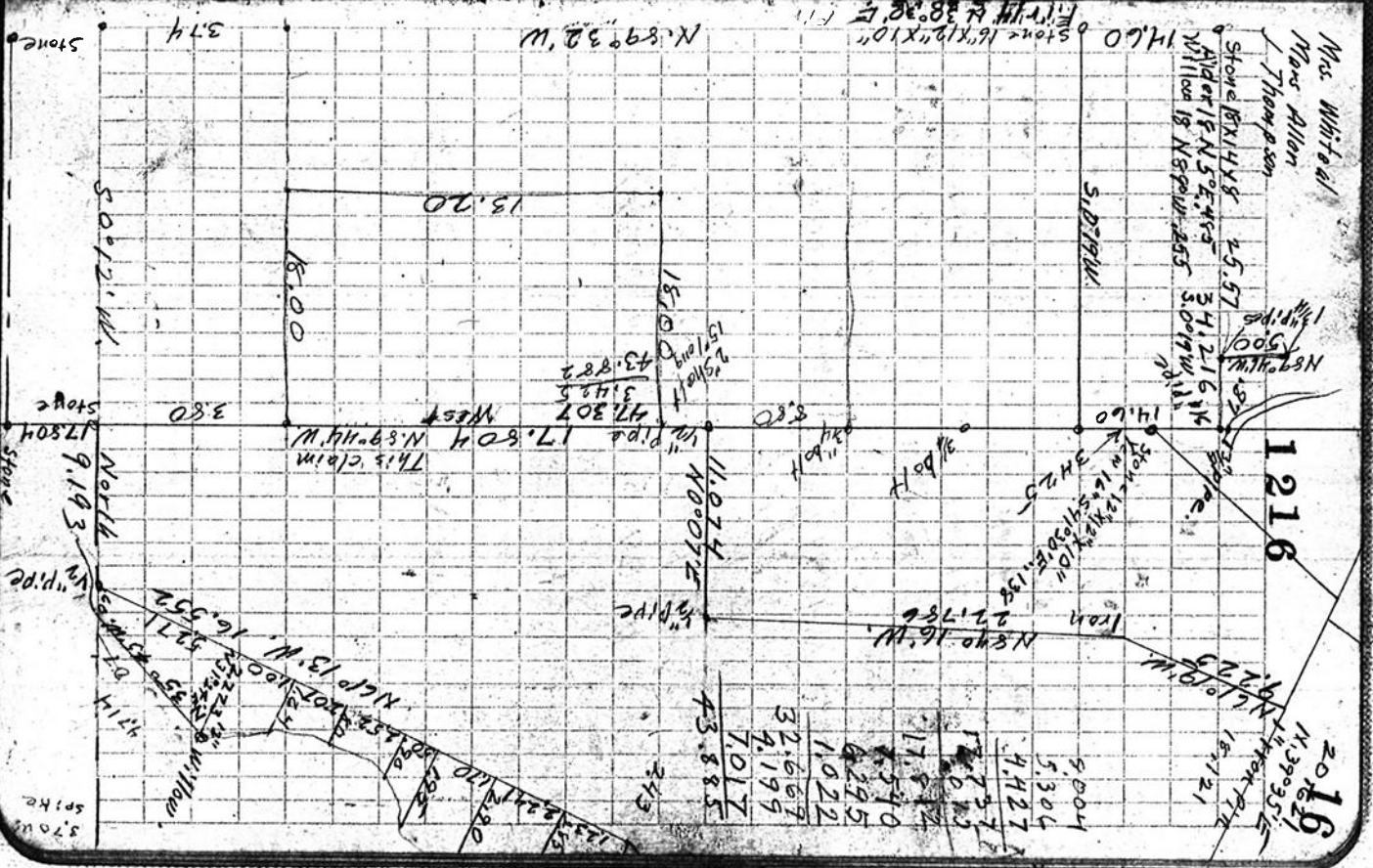
Hardcopy 12-6 #19

also see notes in file

F. B. 65-16

C.S. 185 M.W. Metzgar C1.50
 Beg. at S.E. cor.

0	W. .015 from corner	R N. 141	
1	3.700	+ 20	
2	+ 0.028		
3	+ 5.003		
4	8.009		
5	5.306		
6	4.427		
7	- .007 = 18804 5.013		
8	4.796		
9	7.014		
10	2.918		
11	3.572		
12	0.276		
13	- .023		
14	7.541		
15	6.299		
16	1.022		
17	4.234		
18	2.027		
19	+ 5.243		
20	7.022		
21	Center of 8" post		



1216

2016
 N. 39° 35' E
 15.121

370 W
 570 W
 374
 Stone

Back to S.S. ...
 N 49° 29' W. 9.052 found
 N 48° 16' W. 6.94 1/2" Pipe
 N 329° 06' W 1.365 3/4" Pipe
 1° 50' 3.417 From Pipe
 S 84° 46' W. 1.516 9" C/L Pipe
 N 71° 51' W. 2.217 Willow
 N 67° 29' W. 3.757 Stump
 N 43° 19' W. 2.615 1/4" Pipe
 N 9° 04' E. 9.67 3/4" Pipe
 Ash 12' S. 0° 45' W. 2.34 +.60 to Cen
 " 27' S. 24° W. 1.58 Netysr

7193

141	From 1008	N 40 075 W of 1/2" pipe	
142	9.048		
143	N 35 955 E	6.86	9 East 73 7.25
144	N 58 0	4.757	
145	S 72 8 2	E 2.39	
146	4.114	2462	
147	2088	N 21	
148	2225	5.057	
149	Set @ 250	3K L Line	N 72 9 8 W 2.09 C N. W. W
150	6.332	3.8914	
151	2	6.6	9.82
152	3.823	2.3964	15.8
153	3.823	4	2.4
154	4220.55	5.802	1404
155		6.38	1404
156		2.5740	184
157		2.053	28
158		27.755	1544