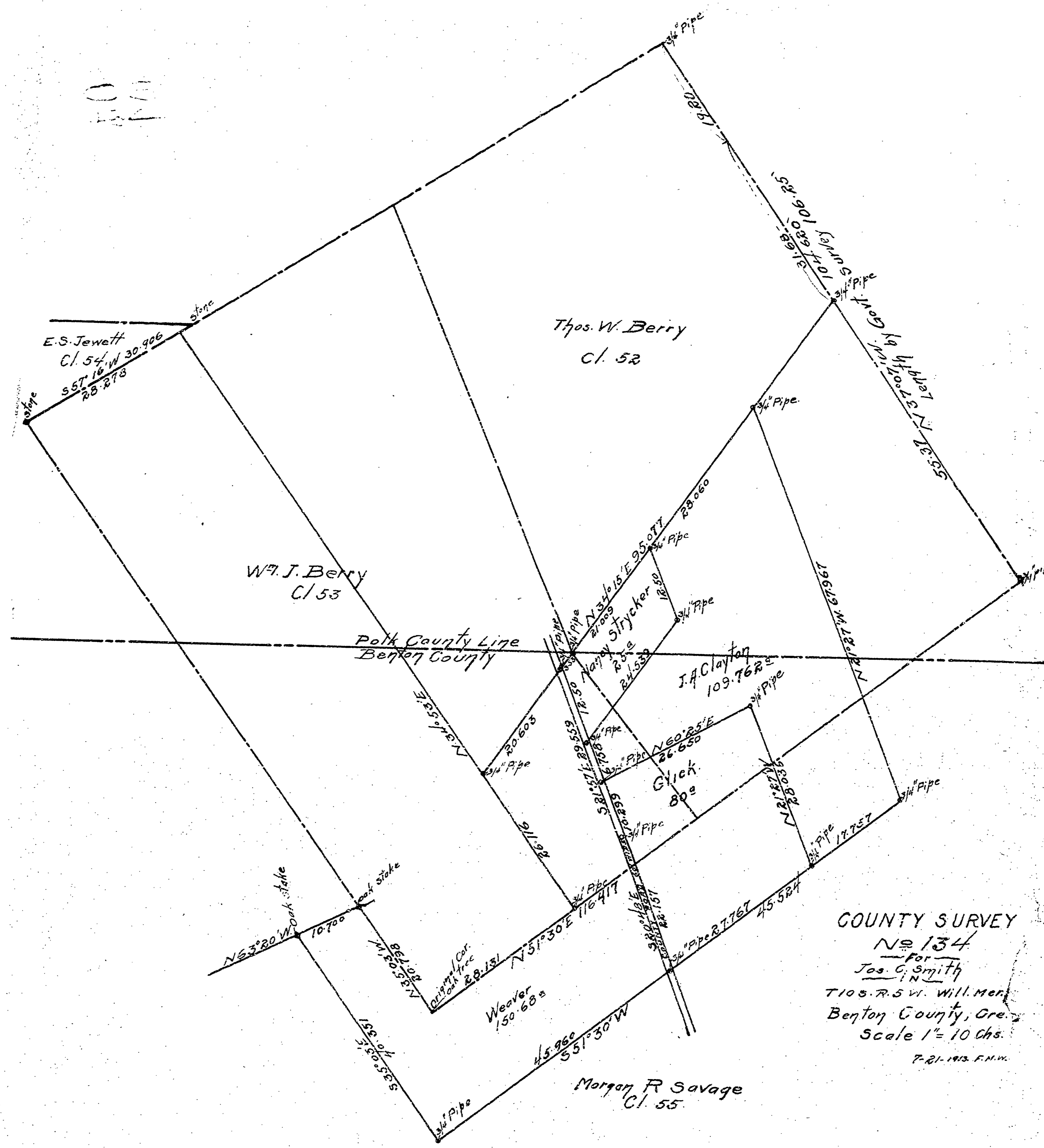


1221



COUNTY SURVEY
 No 134
 for
 Jos. C. Smith
 IN
 T10S. R. 5 W. Will. Mer.
 Benton County, Ore.
 Scale 1" = 10 Chs.
 7-21-1913. F.H.M.

1222

1222

1 1222 2
S 134 Continued

Beginning at the S.W. cor of
Wm Berry D.L.C. T10-5
Thence S. 35° 03' E.

Backsight of .0375 of cor W.

S. 35° 03' E
L R 947.091
S. 34° 24' S
Set 1. 113
5.006
0.0152
0.135.

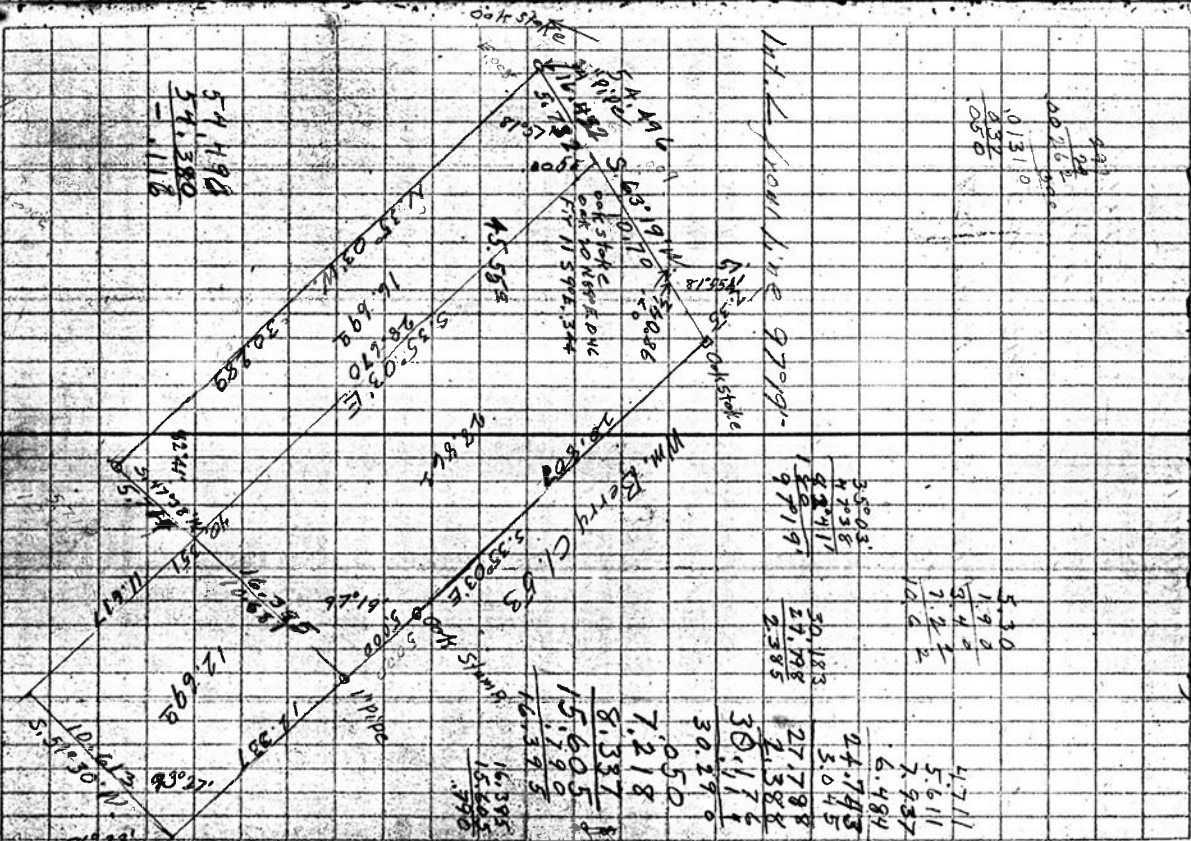
Set 1" Galv pipe 22"

2 S 47° 38' W. +1040' 7222
3 +2° 30' 8.353
4 Set a 3/4" pipe +.790

N 35° 03' W.

5 +2010' 4.714
6 5.611
7 +2° 30' 7.945
8 ~2055' 6.492
9 +2° 36' 3.048
10 Flr 20" N 30° E. 030
set 3/4" pipe
+1.440 2.389
+1.114
5.006

For Jos. C Smith & Family 1934



N. 65° 00' 1/2' E
Correction 18'

3° 30' 5.736
4.340
- 2° 45' 6.365
Sinking S.E. of 194m. 02.7

044
078

047
078
125

043
4

122
028
114
051
000
795
318
234

164
5.736
4.340
6.365