

C.S. # 1240

Hardcopy 11-4 #5

also see notes in file

F. B. 48-7

For Dr. A.P. Howells
1240 1934 8

7 C.S. 333 Continued
 Beg. at a Nail which I set at Cell.

of Sec. 2 T. 11 S. R. 4 W.
 Bearing taken from R.R. as N8P32'E.
 lined on N0°08'E and strike .010 W.

From Cen. Sec. S. 89° 57' W.
 correction E. 02'
 1 S. 005 (S89° 55' W. 39.964)

2 +2° 4.512
 - .293

Set 3/4" Black Pipe + S. 008

3 +2° 15' 2.437
 S. 010

4 +2° 30' 5.484
 - .018
 1/16 con S. 013

5 +2° 30' 2.444

6 +5° 7.251

- 2° 2.514

- 3° 40' 8.000

- 1.97

Striking N. of Cor. .025

Back to Δ 4 +.078

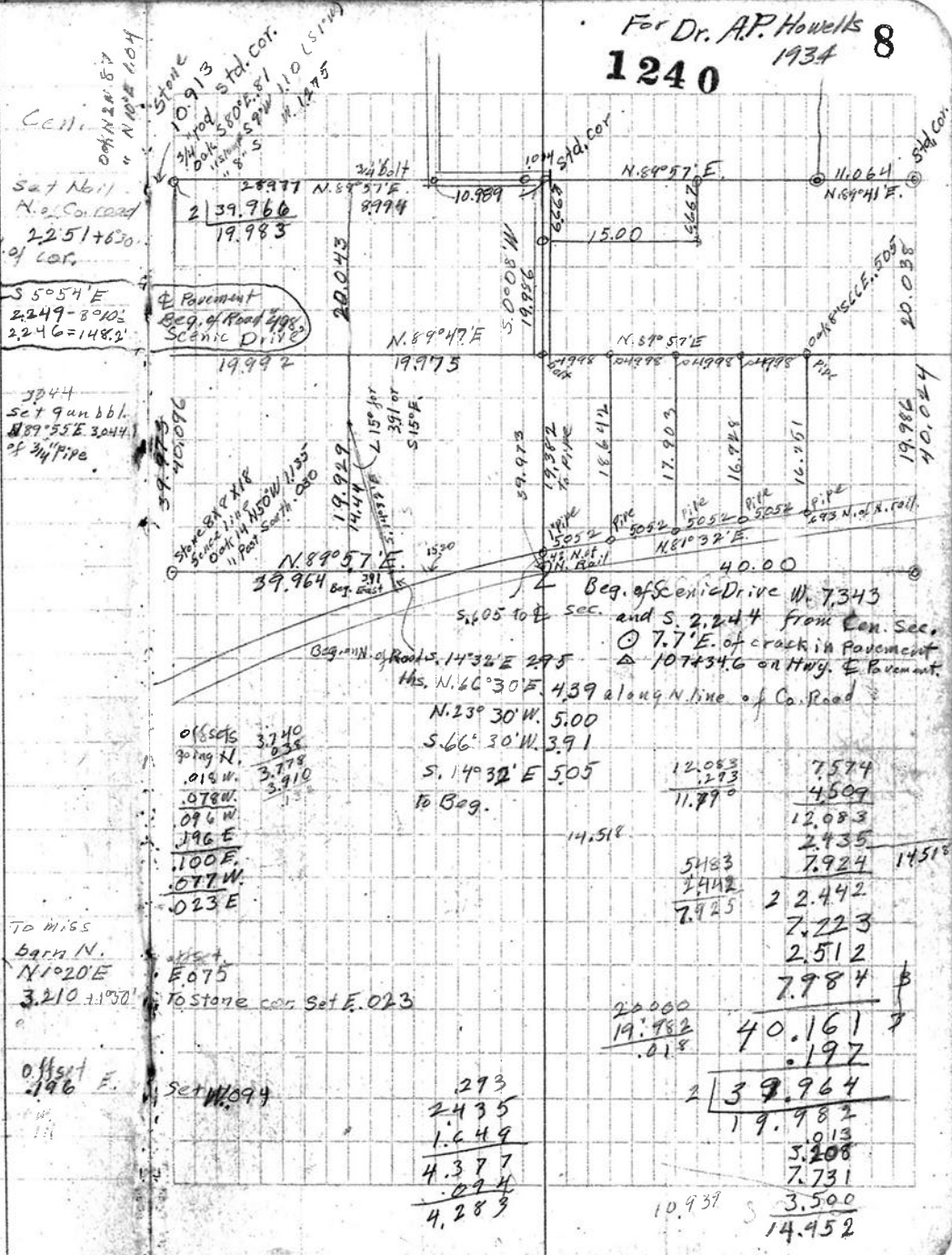
N 0° 09' E.
 correction E. 2'
 < R 1° 01 1/2' +1° 50' 3.210

8 +5° 30' 7.768

9 +8° 40' 3.541

Set a 3/4" galv. pipe 36" and W. 092

Fir 13 S 44° W. .134
 " 12 N 27° W. .157



- offsets
- going N. 3.740
- 0.18 W. 0.55
- .078 W. 3.779
- .096 W. 3.910
- .196 E.
- .100 E.
- .077 W.
- .023 E.

12.083	7.574
.273	4.509
11.77°	12.083
	2.435
5.183	7.924
2.412	14.518
7.925	2 2.442
	7.223
	2.512
	7.984
2.000	40.161
19.982	.197
.018	2 39.964
	19.982
	.013
	3.208
	7.731
10.937	3.500
	14.452

To W 1/5 barn N.
 N1°20'E
 3.210 .1150

offset E. .196
 Set N. 094

293
 2.435
 1.649
 4.377
 .094
 4.283

11

21

N 89° 50' E. +2°

5.586

S. oil

corrections S. 9' -4°

6.489

22

To bolt

L R 18' / 28'

+3° 10'

5.960

S. 933 offset

.0488.031

Fence Post East. 58H

Oak 5" S, 72° E. .157 gone

Apr. 1942

" 6" S, 40° 30' E. .214 gone

" "

Back to Δ 9 set 50° 09' W. on transit line

.361

23

Backsight N 14° 38' W. .361

to 3/4" pipe

then 24

S. 14° 38' E. -7° 30'

2.588

-.005 N.

25

-13° 18'

2.959

-.010 N.

26

-2° 40'

3.276

27

.415

-.016 N.

28

-11° 05'

2.846

+ .566 - 0.88

West

Set W

.021

29

set S 89° 55' W.

.029

3783 N 89° 55' E of X6 cor.

.028 correction

30

+7° 42'

1.664

1649 to 0.010 S. of Δ 3

31 Back to Δ 28

32

N 66° 30' E

+10° 50'

2.210

33

+ 2°

1.519

12

99756 6.489 897804 798048 399024 398536 473166.54	99847 5.96 599082 898623 499235 595088.12 814 23804 5951 47608 0.0265 0.04844114 005 20 0.053	99144 2.568 793152 793152 495720 198288 2.56584672	0.88 5.583 6.473 1.887 5.951 19.982
	97314 2959 875862 486590 875862 194636 287963962	981359 28462 588810 392540 785080 196270 2.79292210	361 2.566 2.880 3.272 415 2.793 12.287 478 12.705
2100 .024 2.076	598986 3.79324 598986 199662 264152826	.566 2.642 2.642 998313 2.642 14.929 .007 14.922	12.287 2.642 14.929 .007 14.922
2.642 2.076 .566	98218 2.21 98218	14.518 1.649 0.29 16.196 0.02 16.189	.293 2.437 1.649 .123 4.502
99098 1664 396392 594588 594588 97098 164899072	.029 0.094 1.23		
3910 .123 3.787			

13

Back to Δ 2

34 Set over S. 008 and N 89° 55' E. 2.93

Then set a gun bbl. N 89° 55' E. 3.044

sand from Δ 34 N. 23° 30' W. + 8° 30' 3.922 = 2.879

Set a 3/4" pipe

36

- 3° 1.619

14° 08' 2.160

- .005

Set 1/2" pipe

14

5.000

1.121 (3.922)

.98902	3.87900
3922	296706
197164	911940
197104	890118
89018	218220
296702	197809
3.57873644	20414

1.617
2.095
3.712
.005
3.707