

CS 1243

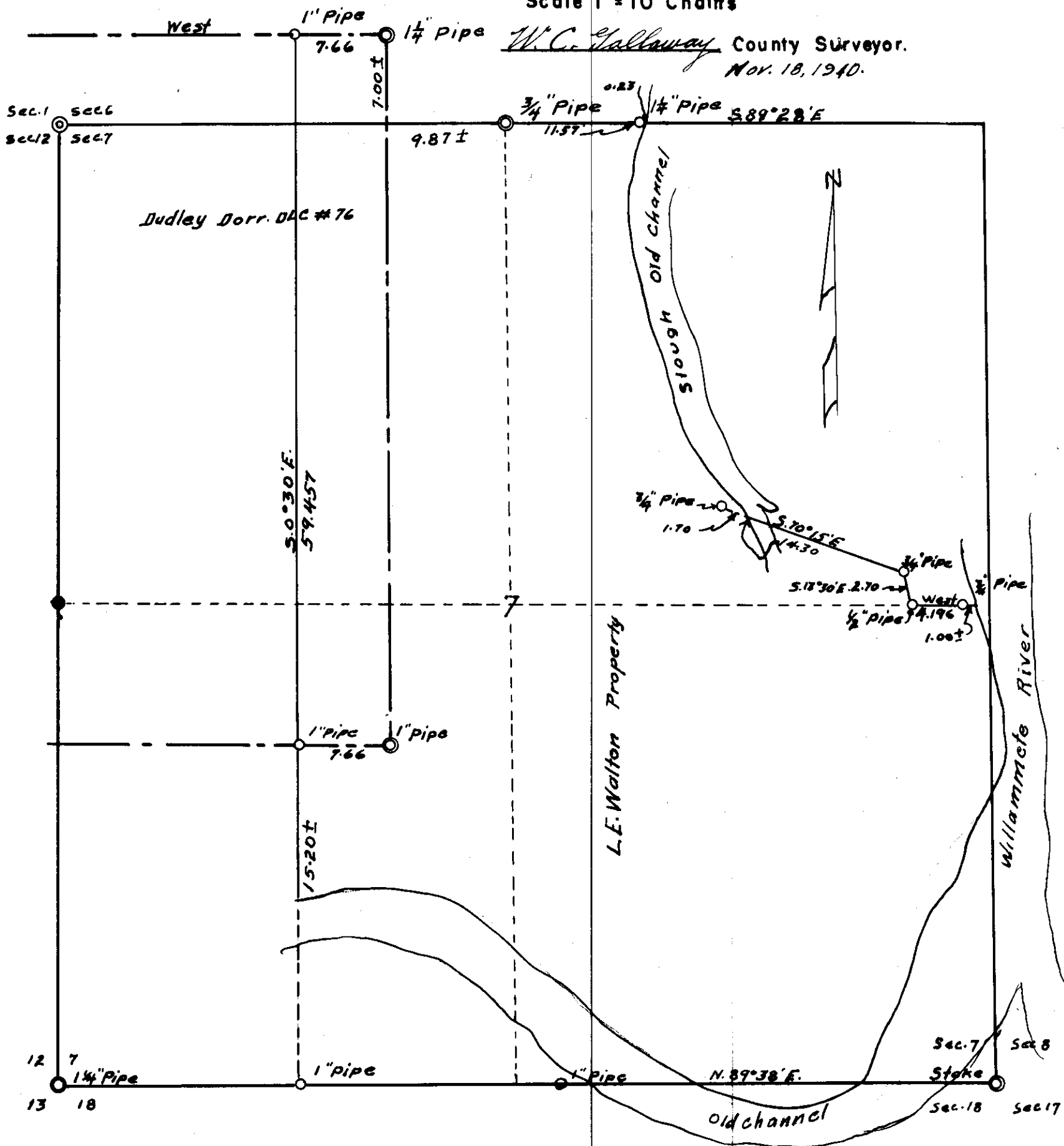
1243

SKETCH OF L.E. WALTON PROPERTY

IN SECTIONS 6 & 7 T.13 S., R.4 W.

Scale 1" = 10 Chains

W.C. Hallaway County Surveyor.
Nov. 18, 1940.



Cont. C.S. #261243

Nov. 18, ;

Description of the L. E. Walton Property in sections 6 and 7,
T. 13 S., R. 4 W., Will. Mer.

Beginning at a 1 $\frac{1}{2}$ " pipe, the northeast corner of Dudley Dorr D. L. C. NO. 76 in Sec. 6, T. 13 S., R. 4 W. of the Will. Mer. in Benton County, Oregon; running thence west along the north line of said D. L. C. 7.66 chains to a 1" pipe, thence S. 0° 30' E. parallel to the east line of said D. L. C. 59.457 chains to a 1" pipe 7.66 chains west of the southeast corner of said D. L. C. - continuing S. 0° 30' E. 15.20 chains more or less to the left bank of a channel of the Willamette River, thence following said left bank down stream to a point 1.00 chain more or less east of a 1" pipe on the river bank, said pipe is 40.007 chains south and 33.354 chains east of the Section corner between sections 6 and 7, thence west to said pipe and continuing 4.196 chains to a 1" pipe, thence N 13° 50' W 2.70 chains to a 1" pipe, thence N 70° 15' W 14.30 chains to the west bank of a slough formerly the Willamette River, thence northerly down the stream along said bank to the north line of Section 7, 0.23 chains east of a 1" pipe, thence N 89° 28' E along said section line to a 1" pipe, thence N 89° 28' E along said section line to a 1" pipe, the said section corner, thence continuing on said section line 9.87 chains more or less to the east line of the said D. L. C., thence along said east line N 0° 30' W 7.00 chains more or less to the place of beginning, containing about 335 Acres.

OREGON STATE HIGHWAY DEPARTMENT
SALEM, OREGON

051243 EARTH WORK COMPUTATION SHEET

Section 051243 Line _____ Sheet No. _____
Highway _____ County _____ Job No. _____

N.E.

STATION NUMBERS	AREAS		VOLUMES		MASS COMPUTATIONS		CLASSIFICATION			
	Cut	Fill	Excavation	Embankment	Emb. + or - %	Summation	Basis	Common	Inter.	Rock
			Sub-totals	Sub-totals						
1.000	7.00			7.00		13.11				
5.000	2.00					3.00				
5.000	2.170		2.170			1.70				
5.000	2.00		2.00			1.34				
5.000	1.70		1.67	.30		7.00				
5.000	4.30		4.30			1.00				
5.140	4.40		4.40							
5.200	4.40		4.40							
5.200	2.70		2.70							
5.200	1.40		1.40							
5.200	2.00		2.00							
5.200	4.20		4.20							
5.200	4.30		4.30							
5.150	2.00		2.00							
5.200	4.00		4.00							
5.200	12.00		12.00							
5.200	7.23		7.23							
5.200	7.6		7.6							
5.200	2.45		2.45							
5.200	12.75		12.75							
5.200	13.13		13.13							
N.450	6.00		6.00							
N.650	4.00		4.00							
N.850	5.00		5.00							
5.200	7.50		7.50							
			107.50	311.13		60.11				
			11.40	4.20		10				
			11.40	4.20						
			2.71	6.18						
			73.00	1.00						

CS 10194 & CS 1243

FBA 70 Pgs 18 & 19.

C.S. 261

Begin. at 14 sec. cor.

7.13-4

6

3/4" Pipe in place

Recorded Oak 30" S 50° W. 18 stg
FIR 30" N. 33 1/2° E. 48 Marked by Geo. Wagon
" 30" S. 83° E. 278 " " "

S 26° 45' E

12.527

12.527

12.527

12.527

12.527

12.527

12.527

12.527

12.527

12.527

12.527

12.527

12.527

12.527

12.527

12.527

12.527

12.527

12.527

Survey for Walter W. Smith

Feb. 27, 1935

Bearing from C.S. #391
From NE of P

S 31° 25' E

S 33° 43' E

S 65° 45' E

S 26° 45' E

S 70° 01' E

S 26° 2' E

26 1/2

(S 26° 45' E long line)

S 19° 28' E

S 19° 28' E

S 19° 28' E

S 19° 28' E

S 19° 28' E

S 19° 28' E

S 19° 28' E

S 19° 28' E

S 19° 28' E

S 19° 28' E

S 19° 28' E

S 19° 28' E

S 19° 28' E

S 19° 28' E

S 19° 28' E

S 19° 28' E

S 19° 28' E

S 19° 28' E

S 19° 28' E

S 19° 28' E

S 19° 28' E

1202
1557
1605

18

12527
9870
22391

12527
9870
22391

12527
9870
22391

12527
9870
22391

12527
9870
22391

12527
9870
22391

12527
9870
22391

12527
9870
22391

12527
9870
22391

12527
9870
22391

12527
9870
22391

12527
9870
22391

12527
9870
22391

12527
9870
22391

12527
9870
22391

12527
9870
22391

12527
9870
22391

12527
9870
22391

12527
9870
22391

12527
9870
22391

12527
9870
22391

12527
9870
22391

12527
9870
22391

12527
9870
22391

(Set 9/10 S 77° 51' E 1504)

S 19° 28' E

S 19° 28' E

S 19° 28' E

S 19° 28' E

S 19° 28' E

S 19° 28' E

S 19° 28' E

S 19° 28' E

S 19° 28' E

S 19° 28' E

S 19° 28' E

S 19° 28' E

S 19° 28' E

S 19° 28' E

S 19° 28' E

S 19° 28' E

S 19° 28' E

S 19° 28' E

S 19° 28' E

S 19° 28' E

S 19° 28' E

S 19° 28' E

S 19° 28' E

S 19° 28' E

S 19° 28' E

S 19° 28' E

S 19° 28' E

S 19° 28' E

S 19° 28' E

S 19° 28' E

S 19° 28' E

S 19° 28' E

S 19° 28' E

S 19° 28' E

S 19° 28' E

S 19° 28' E

S 19° 28' E

S 19° 28' E

S 19° 28' E

S 19° 28' E

S 19° 28' E

S 19° 28' E

S 19° 28' E

S 19° 28' E

S 19° 28' E

S 19° 28' E

S 19° 28' E

S 19° 28' E

S 19° 28' E

S 19° 28' E

S 19° 28' E

S 19° 28' E

S 19° 28' E

S 19° 28' E

S 19° 28' E

S 19° 28' E

S 19° 28' E

S 19° 28' E

S 19° 28' E

S 19° 28' E

S 19° 28' E

S 19° 28' E

S 19° 28' E

S 19° 28' E

S 19° 28' E

S 19° 28' E

S 19° 28' E

S 19° 28' E

S 19° 28' E

S 19° 28' E

S 19° 28' E

S 19° 28' E

S 19° 28' E

S 19° 28' E

S 19° 28' E

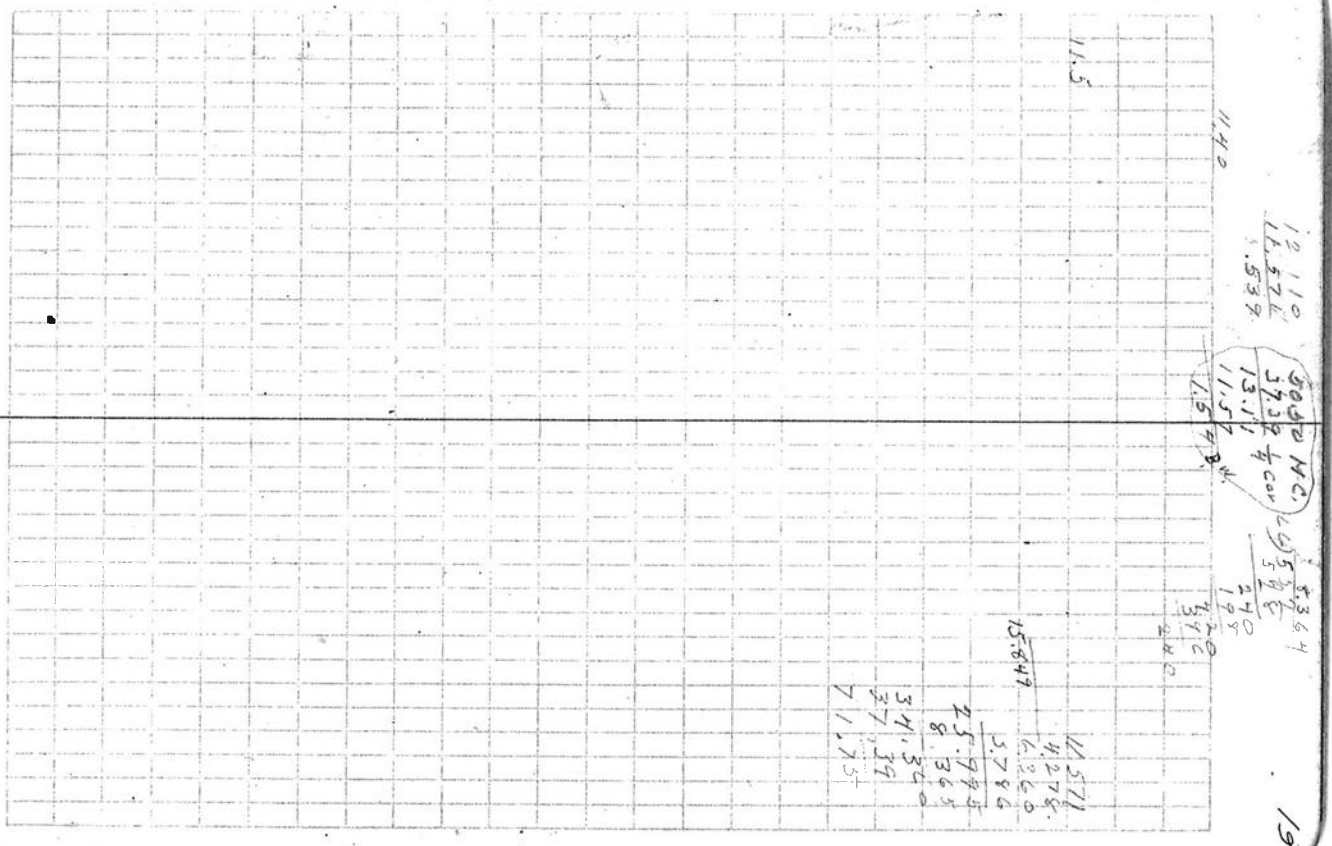
S 19° 28' E

S 19° 28' E

S 19° 28' E

S 19° 28' E

FLOW $\frac{6}{7}$ 45 sec. cor.
 East correction S. 32'
 (5.89° 28' E 11.57 + 23)
 12 62228
 5.343
 - .1
 13 Set 1 1/4" pipe 45.106
 W. Fl. Stand 30" N. 22° W. 1485 MKd. BT
 W. " 32° S 42° W. 230 "
 R. " 19° N. 21° E. 775 "
 14 4.278
 15 6.360
 3.786
 16 8.360
 11.571 at bank
 + 2.29 water
 11800 water
 over Slough
 to W. Bank
 River River



CS 10194 & CS 1243

FBA #70 Pgs 18 & 19.

C.S. 261

Beg. at 1/4 sec. cor.

$\frac{6}{7}$

7.13-4

Recorded $\frac{6}{7}$ 3/4 Pipe in place
 Oak 30" S 5° N. 18 std. stub.
 Fir 30" N. 33 1/2° E. 48 Marked by Geo. Wagoner
 " 30" S. 83° E. 278 " " " "

S 26° 45' E

1 L.L. 20 1/2'

12.527 .076

2 L.R. 27

9.870 .075

Set 3/4" pipe

APPLIC 4' 5" S 83° 00' E 257
 FROM 1.504 S 77° 05' E

Set a 3/8" pipe East 1.202 From 1/4" pipe

4 S 14° E

5.97

We set 3/4" pipe S. 77° 51' E. 1.504

5 S. 38° 30' E

7.500

We set 3/4" pipe S. 77° 51' E. 1.504

Spike in 54" fir S. 70° 15' E. 488

S. 70° 15' E

1.143 .080

6 S. 71° 16' E. L.L. 4° 01'

2.068

7 L.R. looking Wagoner 28-28° 54'

4.866

8

5.509

9 Set 1/4" pipe S. 11° E. .080 From W. Birch
 Balon stump 26" S 54° 09' W. .0767
 Ash 20" N 46° 30' W. .139

S 13° 30' E

2.700 Set 1/2" pipe
 5.667 = 4.116

10 We set 3/4" pipe S. 31° E. 3.314
 Bolt in 30" Balon stub N 74° W. 564

11 3/4" Pipe River N 15° W. Thorn 9" N 74° 20' W. 1.166

Surrey for Walter W. Smith

Feb. 27, 1935

Bearing from C.S. #321

From NE of P

ch. cor.

S. 31° 25' 1/2

S. 33° 43' 1/2

S. 63° 45'

S. 26° 47'

S. 57° 01'

S. 26° 2'

26 1/4'

S. 26° 45' E = S. 19.999 E 10.001 22.394

To 6/7 Sec. cor.

12.527 9.87
 100397 36 .00727
 87689 69.09
 112743 19.74
 82635 6.6909
 27786.19 .0717549

11113 99754
 7005 11113

5715 299262

8001 399016

08006715 99754
 114018822

E sec. 6

(set off 0
 S. 77° 51' E. 1.504)

set N. 19° = 199

L.L. 82° 27' to 0

at 2944 L.R. 30° 40'

87546 E 1140
 4.866 2068
 52527 4.2601
 52527 5.509
 200365
 350187 12.977

425998236 5.509

11.000 7.468

12.977 1.491

3.023 5.977

3.208 5.667

1.717 4.116

1202 18
 387
 .605

From $\frac{6}{7}$ 1/4 sec. cor.

East
correction 5.32'
(S. 89° 28' E 11.57 + .23)

12 6.228

13 5.343

set 1 1/4" Pipe

-.1

45.106

W. Fix Stand 36" N. 22° W. 485 MKd. B.T.

W. " 32° S. 42° W. 230 " "

R. " 19° N. 21° E. 775

14 4.278 over Slough

15 6.360

16 3.786 to W. Bank

8.360 over River

12 110
11.571
5.539

50.50 N.C.
37.39 1/4 cor
13.11
11.57
1.57

5.364
26) 5.364
5.364

19

11.40

11.5

15.847

11.571
4.278
6.360
5.786
25.995
8.365
34.350
37.39
71.75